



ENAIKOON locate-06 LTE

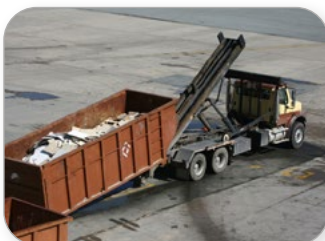
**Tracking, remote control, monitoring:
distance under control - always and everywhere**

ENAIKOON locate-06 LTE is a vehicle tracking unit based on the GPS satellite system and incorporating LTE / GPRS mobile data communication, reporting positions of vehicles and / or other moving objects in real time.

ENAIKOON locate-06 was developed to send various business critical data like number of items, metering data, driver-id, or status confirmation of vehicles or equipment using add-on devices. The device provides the user with improved control and a high level of security vital to companies which are planning to optimise their costs of operations.

Advantages for your business can easily be achieved: user specific configuration allows utilising ENAIKOON locate-06 units fully integrated into the existing work-flow. This provides the user with more flexibility or even allows eliminating redundancies in the work routines.

ENAIKOON locate-06 can often eliminate, or at least significantly reduce, the high cost of capital investments and maintenance. ENAIKOON locate-06 is the result of a successful combination of a high-performance processor with extensive memory capacity, a LTE module and a GPS satellite receiver for global positioning.



Standard Features

GPS - precise information about the current location of the trackable

GPRS - fully supported, cost-effective dedicated line to the internet

LTE-M, NB-IoT - the energy-saving data transmission in current, internationally widespread mobile communications

Data, firmware, and configuration parameters can be individually modified by the user for each device, either through the built-in serial interface and a configuration utility or via the internet (wireless network)

The following ENAIKOON applications are designed to complement this device perfectly

- **inViu pro**
internet telematics portal for professionals with comprehensive trackable data reporting capabilities: location, route, monitoring and alarming of fuel theft / consumption and thresholds, CAN data analysis, and reports with all black boxes, trackers, and GPS enabled smartphones together
- **inViu web**
GPS location cost-effective entry level solution: real-time display of positions on an OpenStreetMap® map, geofence monitoring and alerting, etc.
- **inViu touch**
software suite for smartphones: current location of the mobile phone, map showing the position of trackables directly on the phone, route planning, reading and transmission of NFC TAG data, etc.
- **ENAIKOON DGPS-enabler**
the server component for all users who are dependant on an increased accuracy of GPS coordinates
- **ENAIKOON M2M-commserver**
an internet-based gateway for all communication tasks between tracking devices and any back-end application

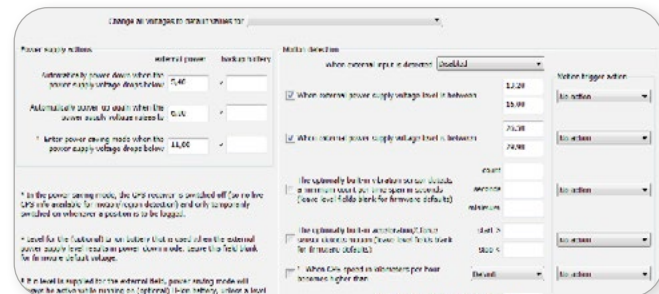
Powerful configuration tool

The ENAiKOON locate-06 remote control unit can be adapted unusually fast and easy to specific requirements. All that is needed is a normal PC that runs the ENAiKOON locate-06 configuration tool and a serial cable.

Complicated, time consuming, user specific application programming, and testing is unnecessary - just a few clicks in the configuration tool are required and the device will do exactly what you expect it to do, depending on the events that occur.

ENAiKOON locate-06 supports phone calls which can be used to trigger multiple actions of the device (e.g. immobilisation of a vehicle with a simple phone call).

The configuration of the device can be changed over the air at any time world wide using the ENAiKOON M2M-commserver configuration tool without physical access to the device.



Connectors

- power Molex 43045-2412
- I/O Molex 43045-0412
- LTE antenna SMA connector
- GPS antenna SMA connector

Accessories (optional)

- VGA color camera
- ENAiKOON driver-id reader and iButton key fob
- solar panel (charging circuit is included in ENAiKOON locate-06)



ENAiKOON camera



ENAiKOON display-56



Garmin® nüvi



ENAiKOON driver-id

ENAiKOON driver-id

for data analysis based on individual driver performance



Feature list

- telit quad band LTE module
 - GPRS Support (class 10)
 - SMS Support
- 64 channel parallel GPS receiver
- micro SIM card reader, suitable for 1,8 V und 3 V SIM
- 4 digital inputs
- 4 digital outputs (500 mA)
- vibration sensor by G-force sensor for low power operation
- acceleration sensor (optional)
- 3x RS232 out interface (full level RS232)
- 5x RS232 in interface (full level RS232)
- connection for a camera
- 1 wire connector for driver-id reader, temperature sensor etc.
- 3 LEDs for LTE / GPS / POWER status
- rugged black aluminum housing: 100 x 67 x 20 mm (3.94 x 2.64 x 0.79 in)
- weight: 145 g (5.12 oz.)
- operating temperature: -30 °C to +60 °C (-4 °F to +140 °F)
- battery recharging only possible above 0 °C (32 °F); data transmission possible only with an operational battery
- power supply (6 V to 31 V DC) with software monitor
- rechargeable battery: 1,100 mA/h
- extensive power-saving functions with multiple configuration parameters
- software updates over either AI (air interface) or serial interface
- E4 approval according to 95/54/EG
- 3G connectivity

Products and prices

Product	Part no.	Product description	Price
ENAIKOON locate-06/can LTE	LOC-19-06	GPS/LTE-M/NB-IoT/GSM/GPRS tracking device <ul style="list-style-type: none"> ● configurable ● 1 Wire connector ● camera connector ● solar panel support ● CAN-bus connector ● connector fuel-tracker ● LTE/GPS antenna ● 3G sensor ● 3G connectivity ● cable for power/ignition 	€ 329.00
ENAIKOON device setup	M2M-03-01	Device setup <ul style="list-style-type: none"> ● activation and unlocking of the SIM card ● insertion of the SIM card into the device ● software configuration and installation on device ● production of harness according to customer needs ● device configuration ● registration with the ENAIKOON M2M-commserver ● registration with inViu pro / web ● full functional test of the device ● full functional test with inViu pro / web (must be ordered along with the device) 	€ 99.00

Accessories and spare parts

Product	Part no.	Product description	Price
ENAIKOON antenna-16	ANT-19-01	Combined LTE/GSM/GPS window antenna with 3m (9,84 ft) cable	€ 89.90
ENAIKOON accessory-21	ZUB-02-21	Serial cable 2 m PC → ENAIKOON locate-06 for the transmission of data, programs and firmware between a PC and ENAIKOON locate-06	€ 18.90
ENAIKOON accessory-26	ZUB-02-26	Plug-in power supply unit 12 V for the operation of ENAIKOON locate-06 with 220 V AC	€ 39.90
ENAIKOON accessory-30	ZUB-02-30	Radio-Remote-Control for activating and deactivating the system	€ 105.00
ENAIKOON camera-06	ZUB-07-32	Camera with connector for ENAIKOON locate-06 Sensor: Omnivision, Resolution: up to 640 x 480 pixel, Format: JPEG, Color depth: 16 bit, Lens: f 4.0mm / F 2.2	€ 79.90
ENAIKOON solar-06	ZUB-07-33	Solar panel with ENAIKOON locate-06 support (special version of ENAIKOON locate-06 required; same price), Material: Thin film solar cells, Nom. voltage: 16.8 V, Power: 2.1 W, Size: 144 x 293 mm (5.67 x 11.53 in) Weight: 600 g	€ 59.90
ENAIKOON accessory-34	ZUB-07-34	Solar battery with ENAIKOON locate-06 support Nom. voltage: 12 V, Capacity: 2,000 mA/h, Size: 150 x 20 x 90 mm (5.9 x 0.79 x 3.54 in), Weight: 680 g	€ 79.90
ENAIKOON fuel-tracker cable	ZUB-10-02	Measuring cable between ENAIKOON locate-06 and tank measuring transmitter of the vehicle	€ 79.00
ENAIKOON display-56	DIS-11-01	ENAIKOON display-56 for mounting in vehicles and for access to remote control unit ENAIKOON locate-06, incl. speakers, incl. ENAIKOON driver-id reader, incl. 2 ENAIKOON iButton	€ 149.00
Garmin® nüvi® 465 Tpro	GAR-10-01	Navigator with truck specific routing using as display for connection to remote control unit ENAIKOON locate-06	€ 299.00
ENAIKOON temp-sensor-03		ENAIKOON temperature sensor compatible with ENAIKOON locate-06 A special cabeling of the black box must be ordered that allows to attach one or multiple temperature sensors	
	ZUB-05-03 ZUB-10-05	with 5 m connector cable with 12 m connetor cable	€ 79.00 € 89.00