



ENAIKOON fuel-tracker

version 1.4

Fuel consumption and tank contents monitor of vehicles / construction equipment

ENAIKOON fuel-tracker is a software plugin that is integrated into inViu pro.

Fuel costs are the highest variable expenditures for fleet operators and construction companies. In addition to fuel prices, there is the widespread crime of fuel theft, which can significantly effect your bottom line.

ENAIKOON fuel-tracker the perfect solution for monitoring the fuel consumption and tank contents of vehicles and construction machinery.

ENAIKOON fuel-tracker consists of an extension of ENAIKOON inViu pro, as well as compact sensory electronics. The current tank fill-level is recorded directly by a fuel level sensor mounted under the tank. This data is sent together with the position data from the ENAIKOON positioning modules to the ENAIKOON M2M-comms server, where it is then processed.

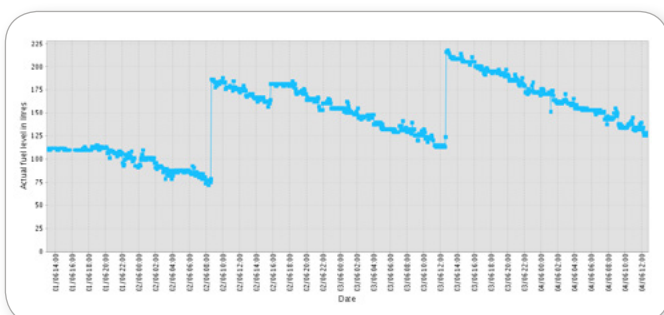
In the ENAIKOON inViu pro list of trackables the program will organize all fuel-relevant data on each vehicle / construction equipment for clear and organised visibility.

Scope of services

the following data is displayed with the aid of ENAIKOON fuel-tracker:

- Detection of fuel theft**
 the electronic sensors make it possible to query the tank fill-level independently, whether the ignition is switched on or off. As a result, it is possible to detect fuel theft, even if the vehicle or construction equipment is switched off. To do this, the tank fill-level sensor is supplied with power from the telematics unit. You can be informed automatically and without any time delay by e-mail or text message, as soon as an unusual quantity of fuel is consumed.
- Recognition of the amount filled**
 the electronic sensors recognize not only the consumption of fuel, but the amount filled as well. This makes it possible to detect discrepancies between the amount filled, according to the receipt and the amount that is actually claimed.
- Continuous information on consumption**
 the distance until the tank is empty is constantly calculated based on the average consumption from past and present tank contents. This way, your dispatcher can easily decide, when and where the vehicle should be refuelled. It is even possible to determine and choose a different country, petrol / gas company, or petrol / gas station with the best fuel price.

Tank fill-level over time



Required hardware

- telematics unit ENAIK00N locate-06

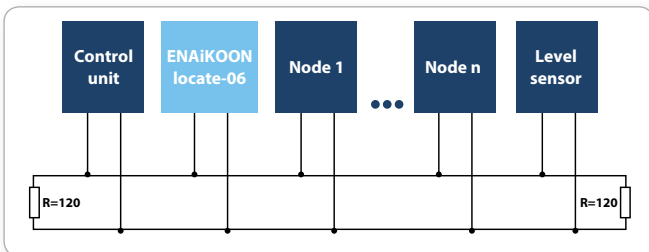


Technical options for recording fill-levels

- ultrasonic sensor for accurate recording of tank fill-levels



- reading of the CAN bus data with the ENAIK00N can-66 analysis tool



Reports

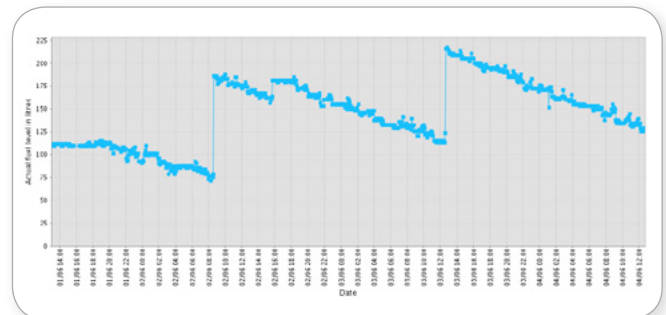
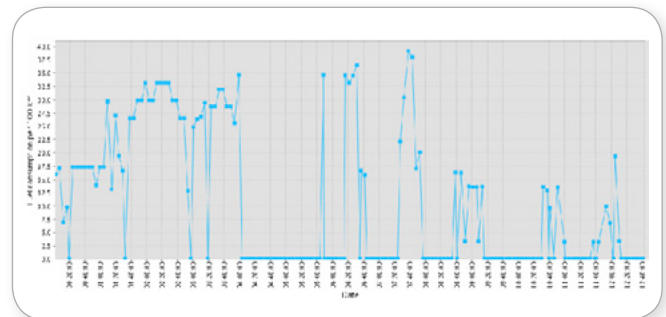
The vehicle list in ENAIK00N inViu pro is expanded to include the following columns

- actual fill level (litres)
- actual fill level (% of tank volume)
- remaining cruising range (km)

Actual fill level [litre]	Actual fill level [%]	Rest range	Name of the driver	Trackable
519.00	86.50	2,030.20	Michael Potter	Scania Truck
373.41	74.68	1,138.17	John Miller	MAN TGM
224.41	37.40	861.65	Philip Masters	Actros 3 2651
159.82	63.93	792.44	Kevin Smith	Atego 1224

Monitoring of fuel consumption

- average consumption
- tank fill-level over time



Products and prices

Product	Part no.	Product description	Price
ENAIKOON fuel-tracker web service	EFT-10-48	Enhancement of inViu pro by ENAIKOON fuel-tracker	per vehicle per month
	EFT-10-24	minimum contractual duration: 48 months minimum contractual duration: 24 months	€ 7.90 € 9.90

Additional hardware

Product	Part no.	Product description	Price
ENAIKOON fuel-level electronic unit	EFT-15-01	<p>ENAIKOON fuel-level electronic unit</p> <ul style="list-style-type: none"> ● for measuring the fuel tank contents together with ENAIKOON fuel-level ultrasonic sensor ● including cable <p>The ENAIKOON fuel-level ultrasonic sensor is required for use of the electronic unit. Up to 4 electronic units can be connected. If a truck has multiple tanks then for each tank one electronic unit and one sensor is required.</p>	€ 239.00
ENAIKOON fuel-level sensor ultrasonic	EFT-15-03	<p>ENAIKOON fuel-level sensor ultrasonic</p> <ul style="list-style-type: none"> ● ultrasonic sensor for measuring the fuel tank contents ● suitable for aluminium and iron tanks ● including 6 meter extension cable <p>The ENAIKOON fuel-level electronic unit is required for use of the sensor.</p>	€ 189.00
	EFT-15-02	<p>ENAIKOON fuel-level sensor ultrasonic ALU</p> <p>ENAIKOON fuel-level sensor ultrasonic IRON</p>	€ 189.00
Complete package: Special adhesive for ENAIKOON fuel-level ultrasonic sensor	ZUB-14-02	<p>Complete package special adhesive for the fuel-level ultrasonic sensor sufficient for mounting of 50 ultrasonic sensors</p> <ul style="list-style-type: none"> ● tube 50 ml ● 50 mixing tubes ● 1 pressing gun 	€ 139.00
Fixing band for mounting of the ENAIKOON ultrasonic fuel-level sensor to tanks	ZUB-15-01	<p>Complete package with fixing band for mounting of the ENAIKOON ultrasonic fuel-level sensor to tanks 5/8" (16 mm), length 32,8 yd (30 m), corrosion-resistant stainless steel A2</p> <ul style="list-style-type: none"> ● sufficient for the fastening of 10 - 12 ultrasonic sensors to a standard tank with height and depth of 24" (60 cm) ● Fixing band: incl. 13 stainless-steel loops 5/8" (16 mm) and 1 clamping tool 	€ 149.00

Additional hardware

Product	Part no.	Product description	Price		
			1-9 units	> 25 units	>100 units
ENAIKOON fuel-tracker capacitive sensor		Capacitive sensor for monitoring the tank level of stationary tanks <ul style="list-style-type: none"> ● including cable, 7 m ● for connection to telematics modules ENAIKOON locate-03, ENAIKOON locate-04 and ENAIKOON locate-06 ● length can be shortened (the sensor must be recalibrated after shortening) ● for recalibration the FLS adjustment module is required 			
	ZUB-15-03	length 70 cm (27.5 in)	€ 209.00	€ 189.00	€ 169.00
	ZUB-14-06	length 150 cm (59 in)	€ 279.00	€ 259.00	€ 249.00
	ZUB-14-07	length 200 cm (79 in)	€ 399.00	€ 299.00	€ 279.00
FLS adjustment module	ZUB-15-04	FLS adjustment module calibration of capacitive sensors after shortening <ul style="list-style-type: none"> ● UNU device ● power supply adapter 220 V / 15.5 V DC ● cables 			€ 109.00