



ENAIKOON data-forwarder

version 3.1

Data exchange between the ENAIKOON M2M-commserver and a customer's server

The ENAIKOON data-forwarder is an ENAIKOON M2M-commserver service that allows users of the ENAIKOON infrastructure to forward data from their ENAIKOON tracking devices to their own server and also the data from their own applications to the ENAIKOON infrastructure.

This data transmission occurs nearly in real-time.

inViu pro and all other ENAIKOON applications compatible with the ENAIKOON M2M-commserver are supported. All tracking devices and smartphone applications provided by ENAIKOON are fully supported.

Data forwarding to customer's system

- requiring the storage of trackable data longer than offered by ENAIKOON
- further use of the trackable data in customer's applications (e.g. dispatching software)
- the personal analysis of the data, that may not be supported by ENAIKOON's software

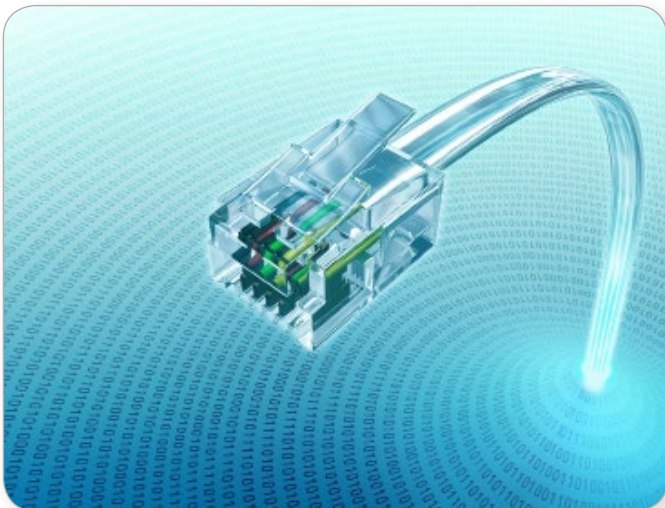
Import data from customer's system to the ENAIKOON server

- send driving jobs from customer's planning system directly to the ENAIKOON display-56 or to the connected navigation device
- transfer existing geofences from the web portal inViu pro for evaluation
- in the ENAIKOON display-56 existing job site numbers can be imported, so for example locations can be assigned to a cost centre

Technical implementation

the following methods of data transmission are currently implemented:

- automatic FTP upload and download of files
- automatic transmission of e-mails with file attachments
- upload and download of XML or JSON data structures through HTTP request handlers
- data exchange through a SQL database installed on the customer's server



Data structure

the following data exchange capabilities exist for a variety of database tables:

- trackables GPS position reports
- confirmations of ENAIKOON driver-id users
- driving jobs and messages for mobile workers
- handling of user accounts and associated mobile objects
- geofences

The current data structure for GPS positions of trackables can be found on the ENAIKOON homepage in the footer under "tools". Please click on the choice "XML database structure" and enter the requested selection criteria.

```
<LATDEG>50.0000</LATDEG>
<LATMIN>27.0000</LATMIN>
<LATSEC>26.3520</LATSEC>
<LONGDEG>4.0000</LONGDEG>
<LONGMIN>10.0000</LONGMIN>
<LONGSEC>29.6460</LONGSEC>
<ALTITUDE>0</ALTITUDE>
<MSG_TYPE>0</MSG_TYPE>
<DIGINP1>0</DIGINP1>
<DIGOUTP1>0</DIGOUTP1>
<SPEED>45</SPEED>
<DIRECTION>123</DIRECTION>
<VOLTAGE>41</VOLTAGE>
<BOXT>2009-10-03 12:58:26.0</BOXT>
<GWT>2009-10-03 12:58:26.0</GWT>
<KMREL>23456</KMREL>
<KMABS>18</KMABS>
...
```

Products and prices

Product	Part no.	Product description	Price
ENAIKOON data-forwarder SQL setup	EDF-08-01	Set up of the SQL database on the customer's own server by ENAIKOON via remote access. Implementation of the permanent transfer of data on the ENAIKOON M2M-commserver	€ 2,400.00
ENAIKOON data-forwarder setup	EDF-08-03	Set up of the data exchange via FTP, HTTP request or e-mail	€ 1,600.00
ENAIKOON data-forwarder web service	EDF-08-02	Monthly fee per trackable for forwarding data from the ENAIKOON M2M-commserver to the server of the customer and vice versa	€ 6.90 at least € 600.00 per fleet per month