



ENAIK00N introduces...

**its new locating device
in a CEE mounted plug**

**... the innovative, combined
hardware and software solution ...**



Locating and Operating Hours Device

Patent pending!

The Challenge:

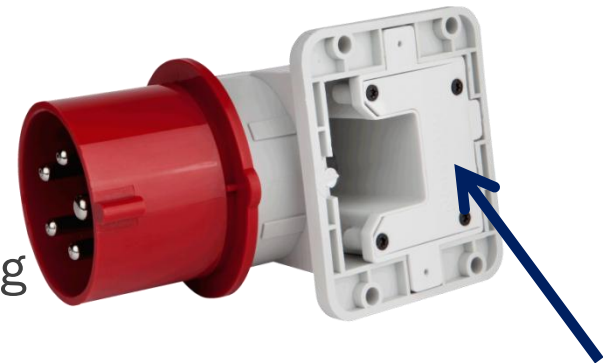
- > Concealed location providing monitoring of electric machinery, vehicles and various apparatus
- > Sourcing and holding of operating hours data for maintenance purposes and itemized billing
- > Installation with minimum time and effort
- > Watertight housing



Locating and operating hours device in a CEE mounted plug

The Solution:

- > Concealed integrated installation
- > Inside a very small low power consuming GPS-/GPRS locating device
- > In a standard CEE mounted device



The CEE mounted plus market:

- > Millions of these plugs are sold every year
- > There is an immense new product standard installation market as well as a huge after sales market replacing existing plugs



The Application



- > Is the container full?
- > Is my mobile sales trailer still at the markets, or did the driver move it earlier?
- > Is anybody using my sales trailer at all at, or is it stationery?
- > Where is my stolen mixing pump, generator or compressor, building machine, concrete mixer, etc.?
- > When is my machinery next due for preventative maintenance service due to prescribed operating hours, i.e. usage?
- > Is the generator still running even though the building site has been vacated?
- > Is my electric fork lift or hydraulic lift being charged or has someone failed to connect it to the power source?



Locating and operating hours device in use on location with a customer

Customer: Building machines dealer and rental Knauf-PFT mixing pumps, rendering machines etc.

Problem: More than 50% of theft and misappropriation within the rental industry; concealment of a locating device

Solution: The ENAIK00N locating device is concealed within a CEE plug

Success: It has been possible in more than 95% of theft cases, to apprehend and recover stolen equipment protected by our device

