



## inViu routes - Quick start guide

The Android app for creating and managing routes, GPS photos, points of interest (POIs), geo-notes, and the position of friends and family members (trackables). Includes free use of the online asset tracking software, inViu web!

### inViu routes - Options

The following icons can be found on the upper menu bar on the main home screen:



- Colour-coded circle



**Yellow**  
GPS signal is weak or not available



**Blue**  
a tap on the blue circle zooms to your current position



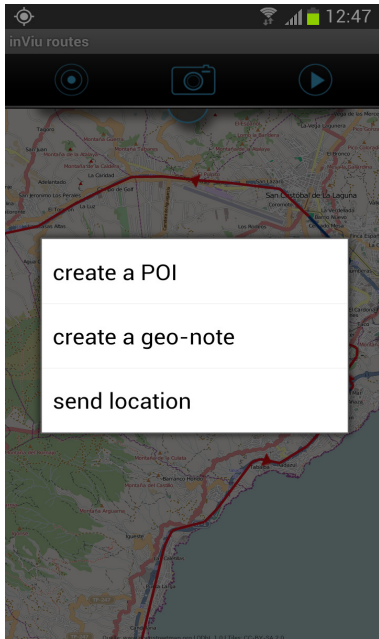
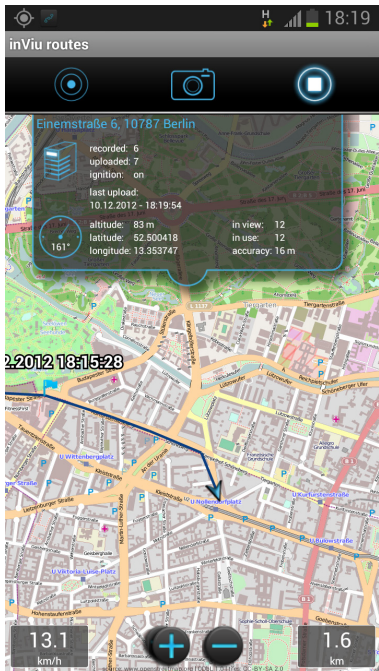
**Grey**  
Your current position is in the centre of the map and is represented by a blue arrow



- **Camera:**  
take a photo with a simple tap - photo image shows the current GPS coordinates and the current route. Photos are located in the "my photos" section of inViu routes.



- **Route Start / Stop:**  
manually start or stop route recording



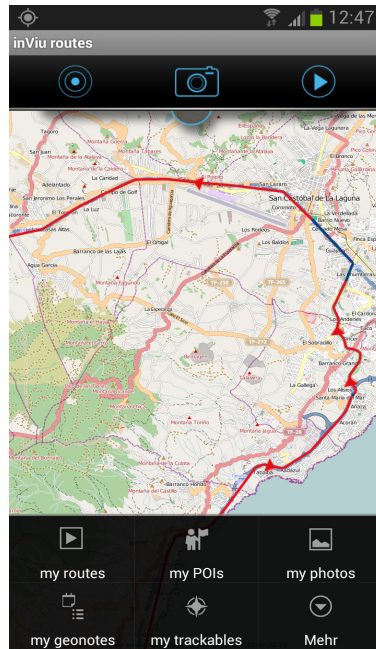
The detail screen is opened by tapping on the blue half circle below the icon bar. It provides information about the connection to the server as well as the GPS quality. Tap on the open window to hide the detail screen.

A short tap on the map will bring up the zoom button at the bottom of the screen.

To its left is the speedometer when the phone is in motion. To its right shows the current distance travelled.

A long tap on the map will create a new POI or geo-note, saving the current coordinate or selected map section.

To zoom in on the map, pull apart with two fingers or give a quick double tap on the screen. Zoom out by contracting the fingers. The map section can be easily panned with your finger.



**The menu button is an essential feature of Android phones.**

Clicking on the menu button on the phone will allow access to the recorded routes, POIs, photos, and geo-notes. Click on "more" to access settings, details, and the options "clear map" and "quit".

## inViu web

### My position in inViu web

The recorded positions and routes can be viewed for free inViu web. Every device has a unique serial number for identification.

### Getting started

The inViu routes installation assistant guides you through the five-part installation process in registering with an existing ENAIKOON iD or creating a new ENAIKOON iD. Tap on "save" to move to the next screen and "cancel" to exit the installation assistant.

After creating an inViu name for the device, you will be prompted to enter your ENAIKOON iD login information. Tap on "register" to complete the process using an existing ENAIKOON iD. The installation is now complete and the data collected in the app will be transmitted to inViu web.

If you do not have an ENAIKOON iD, tap on "sign up" to create a new one. You will be asked to enter your personal information, including e-mail and password. A confirmation e-mail with the activation link will be sent to you. Click on the link to activate your new ENAIKOON iD.

If you choose to skip the Installation Guide, you can register your ENAIKOON iD at a later time through the menu option "more" then "settings".



### inViu web - the free online web portal software

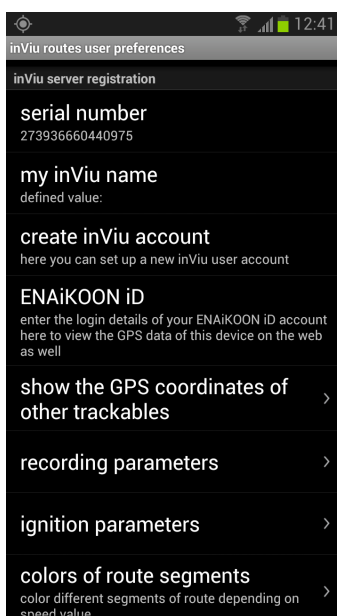
ENAIKOON has over 10 years of experience operating a cloud server asset monitoring solution for their business clients. The key to this solution is their online web portal software, inViu web. This is where the location information of monitored smartphones and GPS devices (ENAIKOON tracking hardware) is saved, and can be retrieved later for further use. For the first time, inViu web is now available for everyone!

- Highlights of the free version:
  - displays current location and the routes travelled of smartphones and GPS devices
  - free for up to 4 devices (Android phones, ENAIKOON tracking hardware)
  - set up geofences (virtual fences around geographical areas) with e-mail alerts when an active Android phone leaves or enters the area

For more information regarding inViu web, please visit our website at:

<https://www.enaikoon.com/en/software/inviu-web/>

## Input entered through settings

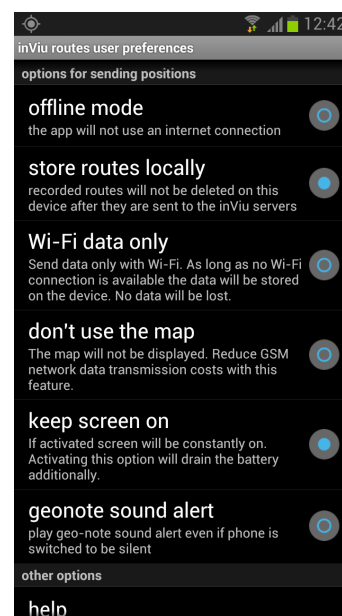


**My inViu name:**  
to uniquely identify a device in an inViu account

**Create an ENAIKOON iD:**  
Use your e-mail address and a secure password to create a new ENAIKOON iD. This data is saved directly from the app.

**ENAIKOON iD:**  
Enter the login details of an already existing ENAIKOON iD.

**Add to list of trackables:**  
The GPS coordinates of the device are sent to the inViu servers and can be viewed in inViu web.



You will be prompted through a detailed installation guide when registering with inViu web.

If you experience issues sending data from the app to inViu web, the "offline mode" option in the "settings" menu may be turned on. Once this option is deactivated, all location data will be sent to the inViu servers and can be viewed online in real time.

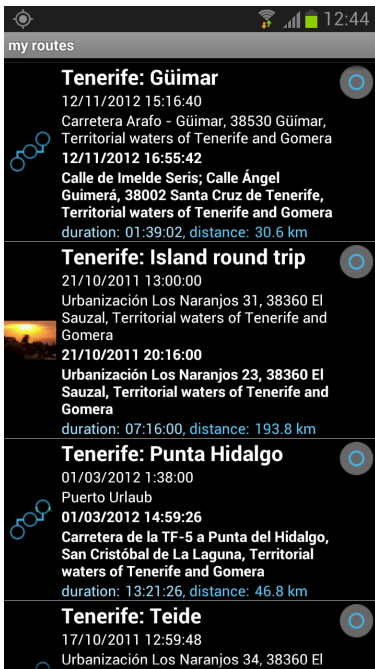


## my routes

A list of all recorded routes are displayed. Routes are sorted by name; unnamed routes will be sorted by date. Tap on the "menu" button for additional options for managing your routes.

### Search routes:

Tap on the "search" button to search all routes by name or date. Some smartphones allow a search option with a long tap on the "menu" button.



### List of my routes

- a short tap on the routes icon to the left of the route shows photos assigned to the route
- a long tap on the routes icon displays the route on the map
- a short tap on the text or title shown for each saved route will open the detail menu. In this menu you can name the route as well as view its start and stop time, duration, and length.

### Tap on these icons for additional information

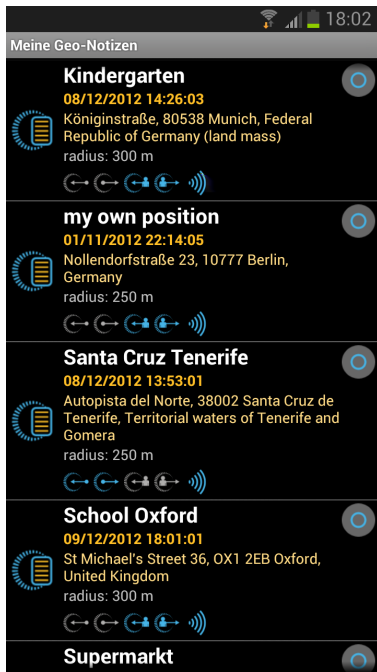
- displays the route on the map
- sends a copy of the route as a PNG file to various installed apps on the phone (e.g. Gmail, Facebook, etc.)
- delete selected route
- speed/altitude graph for this route
- route details (length; waypoints; duration; minimum, maximum, and average speed; and altitude)
- route legend for route colours according to speed
- view the assigned photos
- view the assigned POIs
- export the GPX or KML data to the SD card





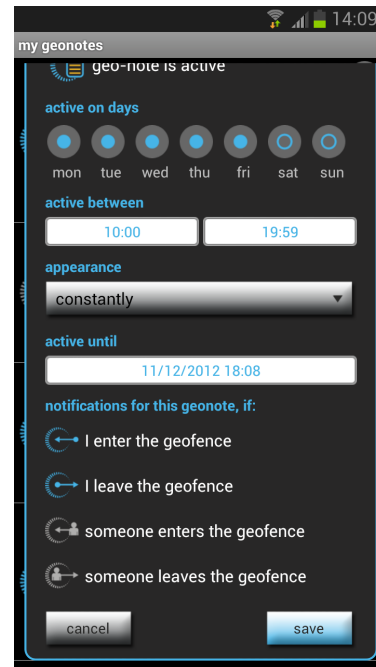
## my geo-notes

Click on "my geo-notes" and then on "show all geo-notes" to view a list of all geo-notes sorted by name. Photos and POIs assigned to a geo-note are shown below and can be tapped on to view them. Click on the "menu" button to display additional options for managing the geo-notes and their assigned photos.



### List of all geo-notes:

- a short tap on the geo-notes icon selects / unselects the geo-note: coloured icon = selected, grey icon = unselected
- a long tap on the geo-notes icon displays the geo-note's location on the map
- a short tap on the text or title shown for each saved route will open the detail menu



### In this screen with geo-note details you can:

- assign names and messages
- activate the alert sound and / or record your own message
- display the location on the map
- display / change the GPS-coordinates
- display / change the geofence radius (minimum radius is 50 m / 164 ft)
- activate / deactivate the geo-note
- change the validity duration
- display / change the notification options: an alert will be sent when you or any other trackable enters or leaves this geofence.



You can create a new geo-note by giving a long tap on the specified location on the map.

The geo-note is displayed on the map as a transparent circle along with the centre point and name of the geo-note.



## my trackables

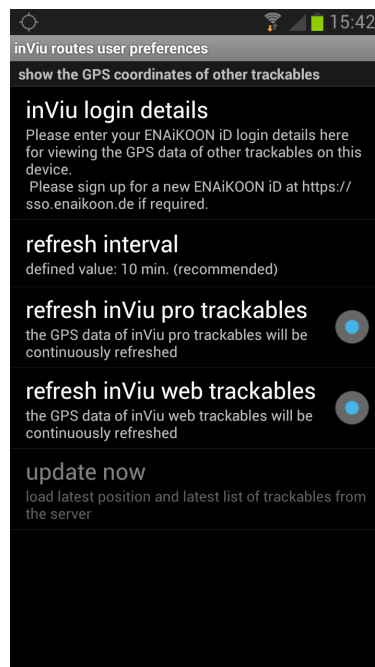
This menu item is available when an ENAIKOON iD is associated with your account. The can be updated in the setting menu under "show the GPS coordinates of other trackables".



### List of trackables

- Short or long tap on the icon or photo of the trackable displays the current location of the trackable on the map
- Short tap on the displayed text opens the detail screen

### Show the GPS coordinates of other trackables



If more than one phone or blackbox of a circle of friends, family, a company, or other community is associated with an ENAIKOON iD, then the GPS position of these phones and blackboxes are displayed on the map. For this purpose the login details for the coordinating ENAIKOON iD have to be entered.

If the refresh interval is set for a longer time period, then the update can be done manually by clicking on "refresh inViu pro trackables" or "refresh inViu web trackables"

### The configuration of the display of the trackables:

- the standard data is taken from the registered values in inViu pro or inViu web
- name, trackable, remarks
- link with a telephone contact, displays if the image is already stored
- assign to a category
- select an icon or photo from the list in routes
- clicking on the "menu" button displays additional options for managing trackables; like sorting functions using various criteria. Trackables search: click on the search button and enter name and / or date. Some phones allow you to search using a long tap on the menu button.
- To quickly display the locations of several Trackables, simply select the circle on the right side and then hit the back button to return to the map.

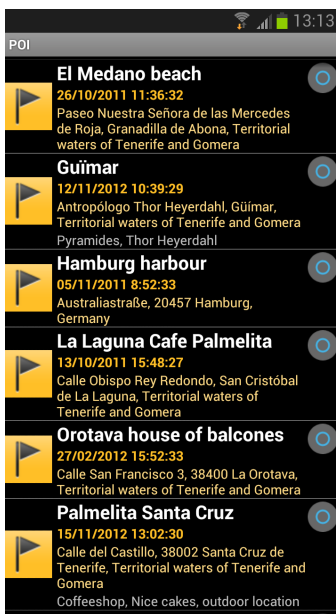




## my POIs

Tap on "my POIs" and a list of all POIs is displayed, sorted alphabetically, POIs without an assigned name are displayed first, sorted by date. The POIs that are assigned to a route - are shown below and can be tapped on.

Click on the "menu" button for additional options for managing POIs.



### List of all POIs

- short tap on the POI icon displays assigned photos when available
- long tap on the POI icon displays the location on the map
- short tap on the displayed text and the details screen is opened. In this screen the POIs can be named, remarks entered, and the GPS coordinates can manually be changed



### Tap on these icons for additional information

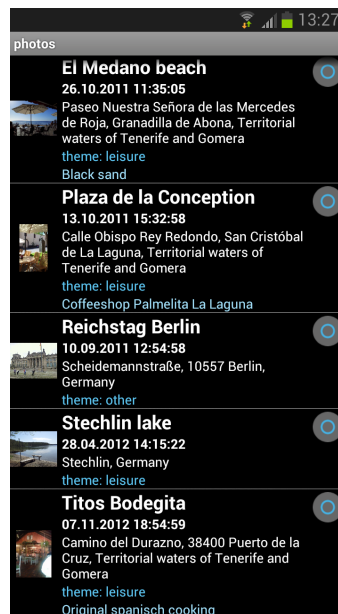
- displays the POI on the map
- sends a copy of the POI various social media
- delete selected POI
- show the route to POI from your own location
- assign POI to a route
- assign the POI to a geo-note
- display the assigned photos



## my photos

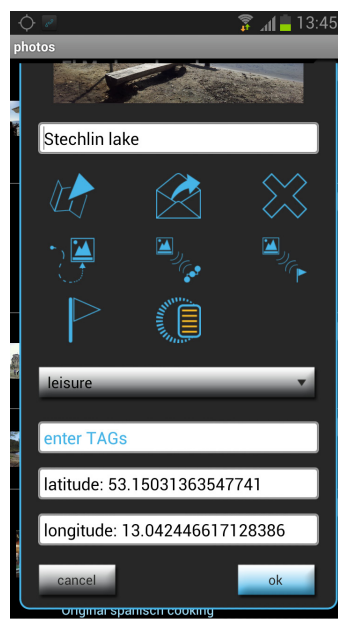
Tap on "my photos" and a list of all photos is displayed, sorted alphabetically, photos without an assigned name are displayed first, sorted by date. The photos that are assigned to a route or a POI - are shown below and can be tapped on.

Click on the "menu" button for additional options for managing photos.



### List of all photos

- short tap on the preview photo and the photo is displayed full size
- long tap on the preview photo and the location is displayed on the map
- short tap on the displayed text and the details screen is opened. In this screen the photos can be named, categories can be chosen, and the GPS coordinates can manually be changed



### Tap on these icons for additional information

- displays the location where the photo was taken on the map
- sends a copy of the photo to your various social media
- delete selected photo
- show the route to photo from your own location
- assign photo to a route
- assign the photo to a POI
- create a POI from the location where the photo was taken

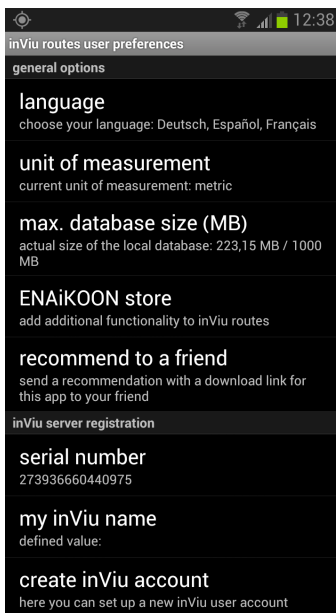
- use the location where the photo was taken as a geo-note



## settings

The default settings of the app are perfectly tuned to achieve optimal route recording. Advanced users have many options to change the settings to their personal preferences.

### General inViu routes settings

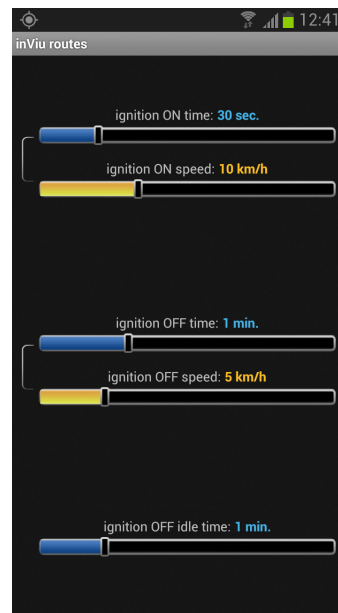


In addition to these settings

- language
- unit of measurement
- max. database size

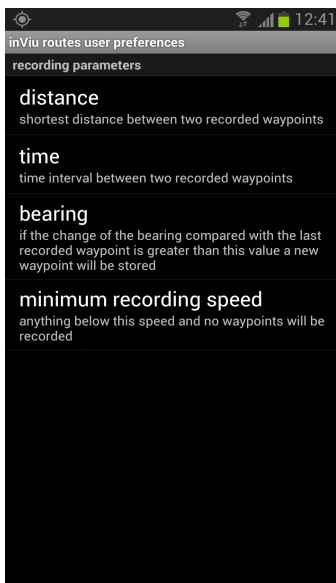
the inViu routes pro version can be purchased in the ENAiKOON store as well as recommending the app to a friend.

### Simulation of ignition



In order to display the individual sections of a long recorded route, the actual movements are recorded and displayed with an "ignition on" and an "ignition off" icon on the map. This ignition signal is sent as well to the inViu servers. In the telematic web portal inViu pro can an electronic driver log book be made using these details. More information can be found here: <http://www.enaikoon.com/en/software/inviu-pro/>

### Settings for recording parameters



**distance:**  
for four different speed brackets the shortest distance between two recorded waypoints

**time:**  
time interval between two recorded waypoints – location information is still sent even if there is no movement

**bearing:**  
if the change of the bearing (cardinal direction) compared with the last recorded waypoint is greater than this value a new waypoint will be stored

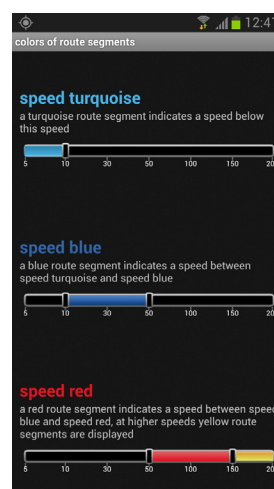
**minimum recording speed:**  
movement below this speed will not be record any waypoints

### Settings possibilities

- time until the ignition is switched on
- Speed for "ignition on"
- Time limit for the ignition off
- Speed for "ignition off"
- Wait time from ignition off (useful when entering an underground garage)

The default settings have worked. Then for example, not for every traffic stop, an "ignition off" signal is sent.

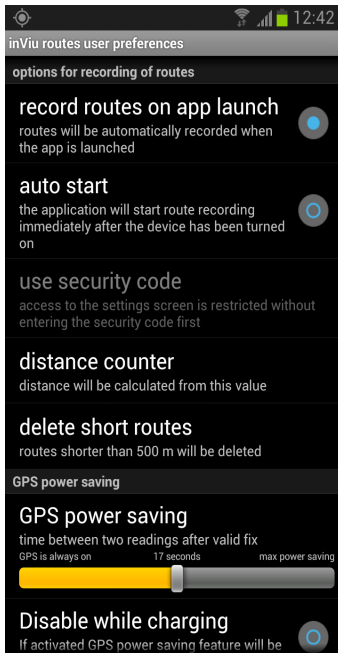
### Colours of route segments



The routes displayed on the map are shown in four different colours depending on the speed.



## Options for recording of routes



**record routes on app launch:**  
routes will be automatically recorded when the app is launched

**auto start:**  
the application will start route recording immediately after the device has been turned on

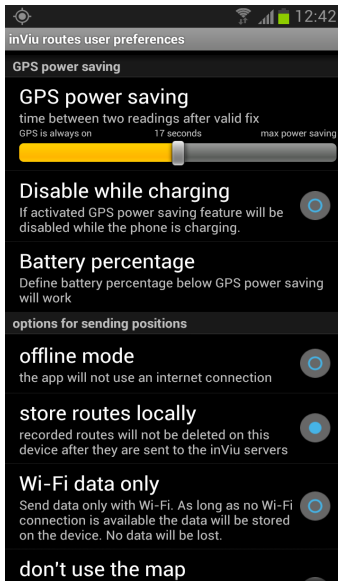
**manually record routes:**  
click on the "start" icon on the main home screen of the app

**distance counter:**  
distances will be counted from this value

**delete short routes:**  
routes shorter this value will be automatically deleted

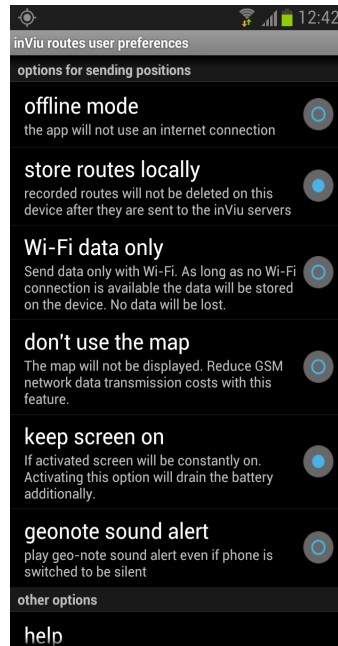
**use security code:**  
access to the settings screen is restricted without entering the security code first. This option is only available with "auto start".

## GPS power saving



Using a slide bar the time can be set between GPS readings by GPS receiver. The greater the number, the more power is saved, but the routes recorded are only as detailed as the frequency of the GPS readings. This power saving mode can be set depending on the whether the device is charging and the battery level.

## More important settings



**offline mode:**  
the app will not use an internet connection

**store routes locally:**  
recorded routes will not be deleted on this device after they are sent to the inViu servers

**Wi-Fi data only:**  
data is saved on the device until it is connected to Wi-Fi; no data will be lost

**screen on:**  
the screen stays on during app use

**geo-note sound alert:**  
turn geo-note alert sound on; even in silent mode