



## ENAIKOON data-forwarder Version 3.1

Data transmission from the  
ENAIKOON M2M-commserver  
to a customers server

The ENAIKOON data forwarder allows users of the ENAIKOON infrastructure to forward data of ENAIKOON tracking devices to their own server and data of their own applications to the ENAIKOON infrastructure.

This transmission can happen nearly in real time.

ENAIKOON fleet-control-web and all other ENAIKOON applications that work on the basis of the ENAIKOON M2M-commservers are supported.

All tracking devices sold by ENAIKOON as well as all ENAIKOON applications for mobile phones are supported.

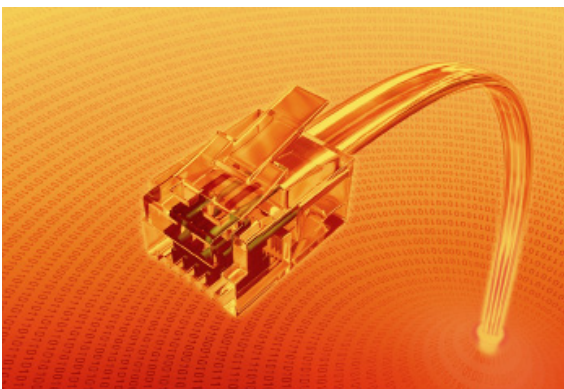
### Possible reasons for the transmission of the data

- The requirement of storing the vehicle data longer than offered by ENAIKOON
- The wish for further use of the vehicle data in applications of the customer (e.g. dispatching software)
- The analysis of the data from points of view which are not supported by ENAIKOON

### Technical implementation

The following ways to transmit data are currently implemented:

- Automatic FTP upload and download of files
- Automatic transmission of e-mails with file attachments
- Upload and download of XML data structures thru HTTP request handlers
- Data exchange thru a SQL database installed on the servers of the customer



## Data structure

Data exchange capabilities exist for a variety of database tables, e.g.

- GPS position reports of tracking devices
- Bookings of ENAIKOON driver-id users
- Driving jobs and messages for mobile workers
- Handling of user accounts and associated mobile objects
- etc.

The current data structure for GPS positions of tracking devices can be found on the ENAIKOON homepage in the area "Trying". Please, click on the choice "Remote data retrieval of a remote monitoring module data from the ENAIKOON M2M commserver" and enter the requested selection criteria.

```
<LATDEG>50.0000</LATDEG>
<LATMIN>27.0000</LATMIN>
<LATSEC>26.3520</LATSEC>
<LONGDEG>4.0000</LONGDEG>
<LONGMIN>10.0000</LONGMIN>
<LONGSEC>29.6460</LONGSEC>
<ALTITUDE>0</ALTITUDE>
<MSG_TYPE>0</MSG_TYPE>
<DIGINP1>0</DIGINP1>
<DIGOUTP1>0</DIGOUTP1>
<SPEED>45</SPEED>
<DIRECTION>123</DIRECTION>
<VOLTAGE>41</VOLTAGE>
<BOXT>2009-10-03 12:58:26.0</BOXT>
<GWT>2009-10-03 12:58:26.0</GWT>
<KMREL>23456</KMREL>
<KMABS>18</KMABS>
```

## Products and prices

| Product                             | Part No.  | Product Description  | Price  |
|-------------------------------------|-----------|--|--|
| ENAIKOON data-forwarder SQL setup   | EDF-08-01 | Setup of the SQL database on the customers own server by ENAIKOON via remote access<br>Implementation of the permanent transfer of data on the ENAIKOON M2M-commserver.<br>System requirements: Tomcat, Java and SQL-server must be preinstalled by the customer | 2,400.00 €   |
| ENAIKOON data-forwarder setup       | EDF-08-03 | Setup of the data exchange via FTP, HTTP request or e-mail   | 1,600.00 €   |
| ENAIKOON data-forwarder web service | EDF-08-02 | Monthly fee per vehicle for forwarding data from the ENAIKOON M2M-commserver to the server of the customer and vice versa  | 6.90 €<br>at least<br>600.00 €<br>per fleet<br>per month |