



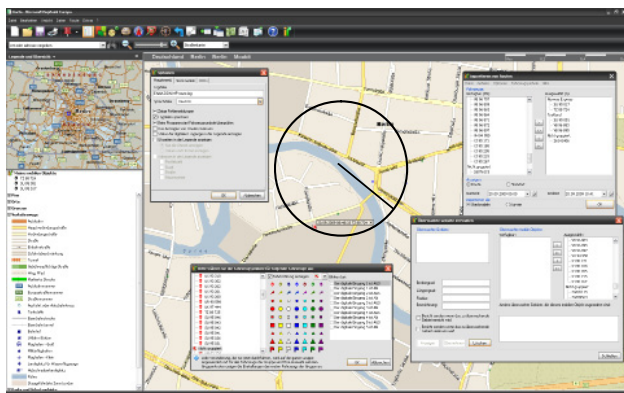
ENAIKOON MP-route Version 4.0

Microsoft® MapPoint® Connector to the ENAIKOON M2M-commserver

Introduction

Mobile objects equipped with ENAIKOON tracking devices or ENAIKOON software for GPS capable cellular phones can send GPS position data and other information to the ENAIKOON M2M-commserver. With ENAIKOON MP-route you can read this information from the ENAIKOON M2M-commserver for displaying it with Microsoft® MapPoint® as single positions, routes etc. including the time stamp and heading direction of each position. In addition you can define any number of go-zones and no-go-zones. This allows the surveillance of any mobile object if it enters or leaves such a zone. If such an event is detected, the software can send an immediate alarm SMS to your cellular phone or an alarm e-mail to your e-mail account.

The Components of ENAIKOON MP-route



Microsoft® MapPoint® with ENAIKOON MP-route 4.0 Plugin

Key Features of ENAIKOON MP-route 4.0 with Microsoft® MapPoint®:

- Graphic presentation of the GPS positions of vehicles and other mobile objects on top of a map
- Optimization of your dispatching: quick visualization of the actual position of each vehicle
- Automatic renewal of the readout: just mount a monitor to a wall and all your dispatchers can see the latest position of the vehicles without even touching a keyboard

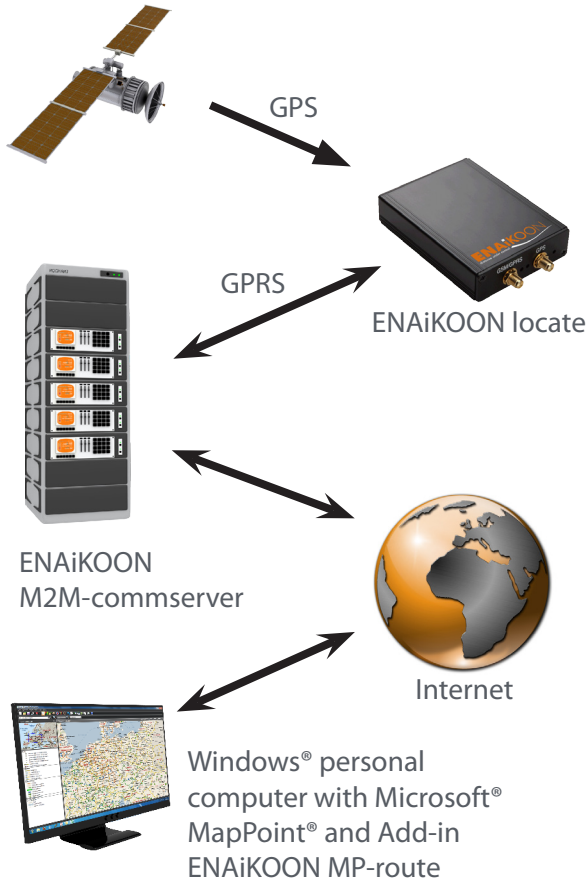
Optimization of your business processes

- Each symbol of a mobile object on the map starts blinking as soon as predefined events occurs (e.g. flashing blue light, cooling unit broken etc.)
- Presentation of multiple positions or routes of multiple vehicles at the same time
- Route planning and route optimization
- Comparison of planned and driven routes for one or multiple vehicles
- Different states of the mobile objects like "ignition on/off", "alarm", "auxiliary drive on/off" are represented by different symbols on the map

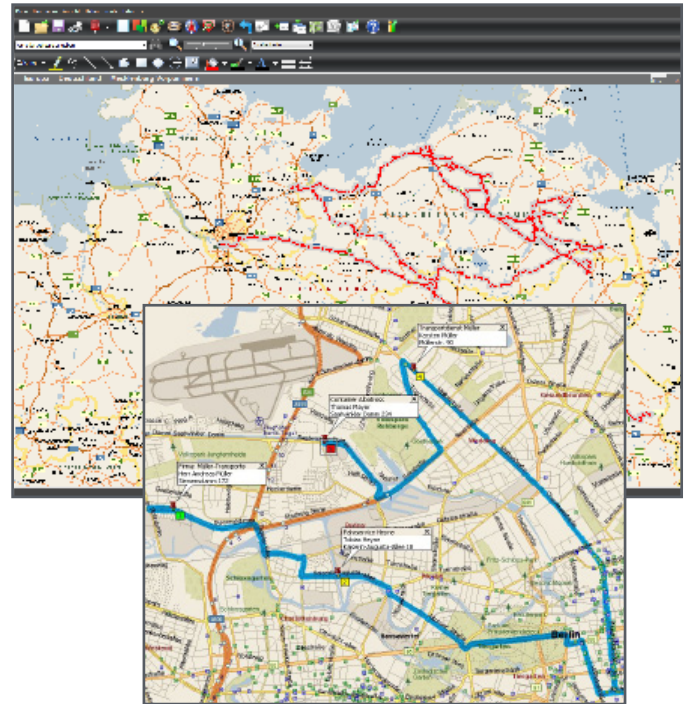
Sales Optimization and Customer Relation Management

- Easy Dispatching: which vehicle is how far away from a certain place which vehicle will arrive when at its destination
- Easy transmission of messages or driving jobs in combination with ENAIKOON display or ENAIKOON v-locator-mobile by selecting a vehicle in the map and sending the related text information to the vehicle

The Functionality



Display of a route in Microsoft® MapPoint®



Products and Prices

Product	Part No.	Product Description	Price
ENAIKOON MP-route	MPR-04-23	Microsoft® MapPoint® COM-Plugin to display data stored on the ENAIKOON M2M-commserver with Microsoft® MapPoint®	278.00 €
Microsoft® MapPoint® Fleet 2010 License	MPR-10-01	Microsoft® MapPoint® Fleet 2010 License with maps of Europe	1320.00 €
ENAIKOON MP-route web service	MPR-09-14	Clearance of the ENAIKOON M2M-commserver to read data of ENAIKOON remote control units into Microsoft® MapPoint® (obligatory for ENAIKOON MP-route) contract duration: 48 month	24.90 € per vehicle per month
ENAIKOON MP-route web service	EMP-09-48	Clearance of the ENAIKOON M2M-commserver to read data of ENAIKOON remote control units into Microsoft® MapPoint® (special price für users of ENAIKOON fleet-control-web) contract duration: 48 month	6.90 € per vehicle per month