



Container Service

Complete control over containers, waste presses and your entire vehicle fleet

Container monitoring – saves time and reduces costs

It is to be hoped that your containers do not look like the one in this picture.



You can see where your containers are, their condition and who transported them to their current location. You can optimise transport routes and maintenance management.

ENAIK00N telematics modules transfer all relevant data to a server in almost real time. All you need to retrieve data is an Internet-capable PC to log into the web portal.

This is what the ENAIK00N telematics solutions offer:

- ✘ Logistical management of container vehicles
- ✘ Management of container groups
- ✘ Management of various locations and customer groups

Determining hours of operation

- ✘ Simple collection of hours of operation for
 - > Drives and motors
 - > Hydraulic units
 - > Temperatures
- ✘ Real-time monitoring of maintenance intervals

Status messages for

- ✘ Status "full"
- ✘ Malfunction
- ✘ Maintenance
- ✘ Transport

GPS positioning

- ✘ Position localisation
- ✘ Display on map
- ✘ Geofence function for monitoring
- ✘ Route tracing and transport status

Anti-theft system

- ✘ Area monitoring with geofence
- ✘ Shock sensor to indicate unauthorised transport
- ✘ Alarm to indicate unauthorised use
- ✘ Remote shut-down in the event of misuse

This is what the ENAIK00N telematics solutions offer:

Employee monitoring

- Detailed evidence of which employee drove which container where
- Analysis of driving behaviour
- Access control: only authorised staff can use the vehicles
- Work report for mobile staff
- Evaluation of vehicle log
- Repair times per container

Automatic email reports

Configuration of points in time or periods

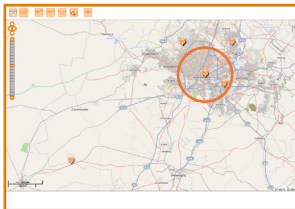
- Electronic log for containers
- Individual analysis
- Definition of email addresses
- Data export in PDF, Excel or csv format
- Download of up to 6 months' history

Patent pending location device revolutionises Container Service

Installation of a telematics unit in containers, waste presses etc. can often be costly and difficult. There's usually little room for additional technology and hardware installation tends to be complicated, often leaving the new unit exposed.

The new telematic device **ENAIK00N locate-60/61** elegantly solves this problem:

The exact GPS-position, the hours of operation and other vital data of the machine is available in real time through information sent from the device. In addition the telematics device is easily concealed inside your current plug and is surprisingly affordable.



Period of operation for vehicle: 415555 (Helmholtzstr. 2-9)									
Time	Location	Speed	Altitude	Temperature	Engine	Brake	Steering	Acceleration	Deceleration
2010/03/10 08:14:06	52.509200 13.482610	0.0	101.0	15.0	0.0	0.0	0.0	0.0	0.0
2010/03/10 08:14:07	52.509200 13.482610	0.0	101.0	15.0	0.0	0.0	0.0	0.0	0.0
2010/03/10 08:14:08	52.509200 13.482610	0.0	101.0	15.0	0.0	0.0	0.0	0.0	0.0
2010/03/10 08:14:09	52.509200 13.482610	0.0	101.0	15.0	0.0	0.0	0.0	0.0	0.0
2010/03/10 08:14:10	52.509200 13.482610	0.0	101.0	15.0	0.0	0.0	0.0	0.0	0.0
2010/03/10 08:14:11	52.509200 13.482610	0.0	101.0	15.0	0.0	0.0	0.0	0.0	0.0
2010/03/10 08:14:12	52.509200 13.482610	0.0	101.0	15.0	0.0	0.0	0.0	0.0	0.0
2010/03/10 08:14:13	52.509200 13.482610	0.0	101.0	15.0	0.0	0.0	0.0	0.0	0.0
2010/03/10 08:14:14	52.509200 13.482610	0.0	101.0	15.0	0.0	0.0	0.0	0.0	0.0
2010/03/10 08:14:15	52.509200 13.482610	0.0	101.0	15.0	0.0	0.0	0.0	0.0	0.0
2010/03/10 08:14:16	52.509200 13.482610	0.0	101.0	15.0	0.0	0.0	0.0	0.0	0.0
2010/03/10 08:14:17	52.509200 13.482610	0.0	101.0	15.0	0.0	0.0	0.0	0.0	0.0
2010/03/10 08:14:18	52.509200 13.482610	0.0	101.0	15.0	0.0	0.0	0.0	0.0	0.0
2010/03/10 08:14:19	52.509200 13.482610	0.0	101.0	15.0	0.0	0.0	0.0	0.0	0.0
2010/03/10 08:14:20	52.509200 13.482610	0.0	101.0	15.0	0.0	0.0	0.0	0.0	0.0
2010/03/10 08:14:21	52.509200 13.482610	0.0	101.0	15.0	0.0	0.0	0.0	0.0	0.0
2010/03/10 08:14:22	52.509200 13.482610	0.0	101.0	15.0	0.0	0.0	0.0	0.0	0.0
2010/03/10 08:14:23	52.509200 13.482610	0.0	101.0	15.0	0.0	0.0	0.0	0.0	0.0
2010/03/10 08:14:24	52.509200 13.482610	0.0	101.0	15.0	0.0	0.0	0.0	0.0	0.0
2010/03/10 08:14:25	52.509200 13.482610	0.0	101.0	15.0	0.0	0.0	0.0	0.0	0.0
2010/03/10 08:14:26	52.509200 13.482610	0.0	101.0	15.0	0.0	0.0	0.0	0.0	0.0
2010/03/10 08:14:27	52.509200 13.482610	0.0	101.0	15.0	0.0	0.0	0.0	0.0	0.0
2010/03/10 08:14:28	52.509200 13.482610	0.0	101.0	15.0	0.0	0.0	0.0	0.0	0.0
2010/03/10 08:14:29	52.509200 13.482610	0.0	101.0	15.0	0.0	0.0	0.0	0.0	0.0
2010/03/10 08:14:30	52.509200 13.482610	0.0	101.0	15.0	0.0	0.0	0.0	0.0	0.0
2010/03/10 08:14:31	52.509200 13.482610	0.0	101.0	15.0	0.0	0.0	0.0	0.0	0.0
2010/03/10 08:14:32	52.509200 13.482610	0.0	101.0	15.0	0.0	0.0	0.0	0.0	0.0
2010/03/10 08:14:33	52.509200 13.482610	0.0	101.0	15.0	0.0	0.0	0.0	0.0	0.0
2010/03/10 08:14:34	52.509200 13.482610	0.0	101.0	15.0	0.0	0.0	0.0	0.0	0.0
2010/03/10 08:14:35	52.509200 13.482610	0.0	101.0	15.0	0.0	0.0	0.0	0.0	0.0
2010/03/10 08:14:36	52.509200 13.482610	0.0	101.0	15.0	0.0	0.0	0.0	0.0	0.0
2010/03/10 08:14:37	52.509200 13.482610	0.0	101.0	15.0	0.0	0.0	0.0	0.0	0.0
2010/03/10 08:14:38	52.509200 13.482610	0.0	101.0	15.0	0.0	0.0	0.0	0.0	0.0
2010/03/10 08:14:39	52.509200 13.482610	0.0	101.0	15.0	0.0	0.0	0.0	0.0	0.0
2010/03/10 08:14:40	52.509200 13.482610	0.0	101.0	15.0	0.0	0.0	0.0	0.0	0.0
2010/03/10 08:14:41	52.509200 13.482610	0.0	101.0	15.0	0.0	0.0	0.0	0.0	0.0
2010/03/10 08:14:42	52.509200 13.482610	0.0	101.0	15.0	0.0	0.0	0.0	0.0	0.0
2010/03/10 08:14:43	52.509200 13.482610	0.0	101.0	15.0	0.0	0.0	0.0	0.0	0.0
2010/03/10 08:14:44	52.509200 13.482610	0.0	101.0	15.0	0.0	0.0	0.0	0.0	0.0
2010/03/10 08:14:45	52.509200 13.482610	0.0	101.0	15.0	0.0	0.0	0.0	0.0	0.0
2010/03/10 08:14:46	52.509200 13.482610	0.0	101.0	15.0	0.0	0.0	0.0	0.0	0.0
2010/03/10 08:14:47	52.509200 13.482610	0.0	101.0	15.0	0.0	0.0	0.0	0.0	0.0
2010/03/10 08:14:48	52.509200 13.482610	0.0	101.0	15.0	0.0	0.0	0.0	0.0	0.0
2010/03/10 08:14:49	52.509200 13.482610	0.0	101.0	15.0	0.0	0.0	0.0	0.0	0.0
2010/03/10 08:14:50	52.509200 13.482610	0.0	101.0	15.0	0.0	0.0	0.0	0.0	0.0
2010/03/10 08:14:51	52.509200 13.482610	0.0	101.0	15.0	0.0	0.0	0.0	0.0	0.0
2010/03/10 08:14:52	52.509200 13.482610	0.0	101.0	15.0	0.0	0.0	0.0	0.0	0.0
2010/03/10 08:14:53	52.509200 13.482610	0.0	101.0	15.0	0.0	0.0	0.0	0.0	0.0
2010/03/10 08:14:54	52.509200 13.482610	0.0	101.0	15.0	0.0	0.0	0.0	0.0	0.0
2010/03/10 08:14:55	52.509200 13.482610	0.0	101.0	15.0	0.0	0.0	0.0	0.0	0.0
2010/03/10 08:14:56	52.509200 13.482610	0.0	101.0	15.0	0.0	0.0	0.0	0.0	0.0
2010/03/10 08:14:57	52.509200 13.482610	0.0	101.0	15.0	0.0	0.0	0.0	0.0	0.0
2010/03/10 08:14:58	52.509200 13.482610	0.0	101.0	15.0	0.0	0.0	0.0	0.0	0.0
2010/03/10 08:14:59	52.509200 13.482610	0.0	101.0	15.0	0.0	0.0	0.0	0.0	0.0
2010/03/10 08:15:00	52.509200 13.482610	0.0	101.0	15.0	0.0	0.0	0.0	0.0	0.0

An overview of ENAIK00N telematics

- Very large selection of different telematics modules: suitable solutions for almost any application area
- Mobile telephone transmissions in real time: you always know what's going on
- Powerful, highly secure, web-based solution:
 - No software installation required
 - Data retrieval via any web browser - even with a mobile phone
 - Possibility to connect to existing programs (e.g. scheduling software)
- Automatic email reports, SMS for easy handling
- Evaluations put you in the know: Logbook, daily and weekly reports for individual drivers or machines, break times, speed profiles

Easy to use technology

- Installation of the device within minutes
- Maintenance-free operation
- Detailed manual and hotline with usual call charges

Useful extras

ENAIK00N driver-id

An inexpensive personal identification system that can be used among other things for allocation control.

- Time recording and billing for mobile workers
- Allocation control: who provided what performance with which vehicle?

ENAIK00N rfid-tracker

- Allows data to be captured seamlessly and tamper-proof on
 - Working times
 - Activity reports
 - Container inventory and movements
- Fitting places of use and the container with RFID chip
- Mobile service staff equipped with RFID-capable mobile telephone from e.g. Nokia



ENAIK00N buddy-tracker

You're on the road and want to keep an eye on things? We have the right software for BlackBerry® and Windows® Mobile phones.

