

ENAIKOOON

MP-route 4.0

User Manual

**ENAIKOOON MP-route
in connection with
Microsoft® MapPoint® 2009**

**User-friendly Software
for depiction of positions and tracks of
mobile objects
as well as for
the management of allowed and forbidden areas**

1 A word in advance

Thank you for purchasing this software from ENAIKOON!

The read-out and the analysis of position data of mobile objects as well as the creation and management of controlled areas can comfortably be handled using ENAIKOON MP-route. High-performance functions help you to keep control of your fleet. You will soon be able to find out which advantages of the software suit your field of use the best.

We wish you success with the use of your software!

All the information in this documentation was put together after being checked carefully. However this does not represent an assurance of product characteristics. ENAIKOON takes responsibility only to the extent as specified in the sales terms and delivery conditions.

Furthermore ENAIKOON takes responsibility for the functionality of the software, however not to the compliance with all regulations as stated in the licence terms of Microsoft® MapPoint®.

Circulation and duplication of the documentation and software as a part of this product as well as the use of its content is only permitted with a written approval of ENAIKOON GmbH.

Trademarks

The ENAIKOON logo and the names ENAIKOON, ENAIKOON FT-route, ENAIKOON MP-route, ENAIKOON fleet-control-web, ENAIKOON M2M-commsserver, ENAIKOON data-forwarder, ENAIKOON time-29, ENAIKOON locate, ENAIKOON inmarsat, ENAIKOON v-locator-mobile, ENAIKOON v-locator-business, ENAIKOON v-locator-work, ENAIKOON v-locator-pro, ENAIKOON can-66, ENAIKOON rfid-tracker, ENAIKOON driver-id, ENAIKOON orkan and ENAIKOON buddy-tracker are registered trademarks of ENAIKOON GmbH.

All other used names may be trademarks, or registered trademarks of its respective owners.

ENAIKOON reserves the right to change the mentioned data without prior notice and does not take any responsibility for technical inexactness and/or omission.

Berlin, November 1st 2009

© 2003-2009 ENAIKOON GmbH, Berlin

Version: 4.0

Notices concerning this User Manual

This documentation addresses to users of the software Microsoft® MapPoint® 2009 in connection with remote monitoring modules of ENAIKOON.

Employees of various parts of the company have contributed to this documentation in order to offer you the best possible support in the use of your ENAIKOON product. If you however find errors or want to express criticism or make any suggestions concerning this documentation, please send an e-mail to:

E-mail: productmanagement@enaikoon.com

This documentation is to help you use the wide functions of this software ideally. Please read this manual carefully.

2 Index

1	A word in advance	2
2	Index	4
3	Installation of Microsoft® MapPoint® and ENAIKOON MP-route.....	6
3.1	Installation of Microsoft® MapPoint®	6
3.2	Installation of ENAIKOON MP-route	6
3.2.1	Installation of ENAIKOON MP-route via the website	7
3.2.2	Installation of ENAIKOON MP-route from CD	9
3.3	The Setup Assistant	9
3.4	Reparation and uninstallation of ENAIKOON MP-route.....	14
4	Use of the ENAIKOON MP-route software	20
4.1	Operation modes of the software.....	20
4.2	Launching ENAIKOON MP-route	20
4.3	The main window.....	22
4.4	Logoff.....	24
4.5	User account change	24
4.6	Closing ENAIKOON MP-route without logging off.....	24
5	Navigated routes or positions	25
5.1	Vehicle selection	26
5.2	Position	28
5.3	Navigated routes	29
5.3.1	Selection of periods	29
5.3.2	Display options for routes	30
5.3.2.1	Pushpins.....	30
5.3.2.2	Curves	30
5.3.2.3	Routes.....	31
6	Messages and driving jobs	33
7	Main menu bar.....	38
7.1	File	38
7.2	Area.....	38
7.2.1	Create new area under surveillance	39

7.2.2	Manage areas under surveillance	42
7.3	Options	43
7.3.1	Main	44
7.3.2	Pushpins	45
7.3.3	URLs and data paths	48
7.4	Vehicle symbols	49
7.4.1	Assigning symbols to single vehicles	50
7.4.2	Status of the digital input	53
7.4.3	Assign a symbol to grouped mobile objects	54
7.5	Help	56
7.5.1	User Manual	56
7.5.2	Send log files to ENAIKOON support	56
7.5.3	About	57
8	Launching ENAIKOON MP-route via ENAIKOON fleet-control-web	58
9	Status messages and progress bar	60
10	Commando line execution of ENAIKOON MP-route	61
10.1	DOS Box	61
10.2	Command line parameters	62
11	Tips for use	65
11.1	Tips for the use of MapPoint®	65
11.2	Tips for advanced users	65
11.2.1	Log files	65
11.2.2	Display of system information	65
11.2.3	Address path for log files	66

3 Installation of Microsoft® MapPoint® and ENAIKOON MP-route

Microsoft® MapPoint® is versatile software and can be used to display driven routes for example. These routes are accumulations of way points within a user defined time period.

The requirement for the display of positions and way points of an ENAIKOON remote monitoring module is the storage of the data on the ENAIKOON M2M-commserver. A licence agreement is mandatory for the use of the ENAIKOON M2M-commserver, which requires a charge and is offered by ENAIKOON.

3.1 Installation of Microsoft® MapPoint®

Insert the program DVD of Microsoft® MapPoint® 2009 into the DVD drive of your computer.

The installation program starts automatically. If the auto start function is deactivated, please access the DVD drive and run the file **setup.exe** by double-clicking it.

Please follow the installation instructions of the Microsoft® MapPoint® 2009 installation routine.

We recommend that you choose the default directory as well as to install the whole software („full installation“), as you might otherwise be asked to insert the Microsoft® MapPoint® DVD every time you launch the program, in order to load the map material.

3.2 Installation of ENAIKOON MP-route

ENAIKOON MP-route is a COM-Plug-in program expansion for Microsoft® MapPoint®.

This program expansion lets you for example display the driven route of your freight vehicle on the map in a few easy steps at any time by clicking the new menu item that was created through the installation of ENAIKOON MP-route.

Before installing ENAIKOON MP-route, Microsoft® MapPoint® must already be installed according to chapter 3.1 “Installation of Microsoft® MapPoint®”, as the registration of ENAIKOON MP-route with MapPoint® can otherwise not be carried out properly.

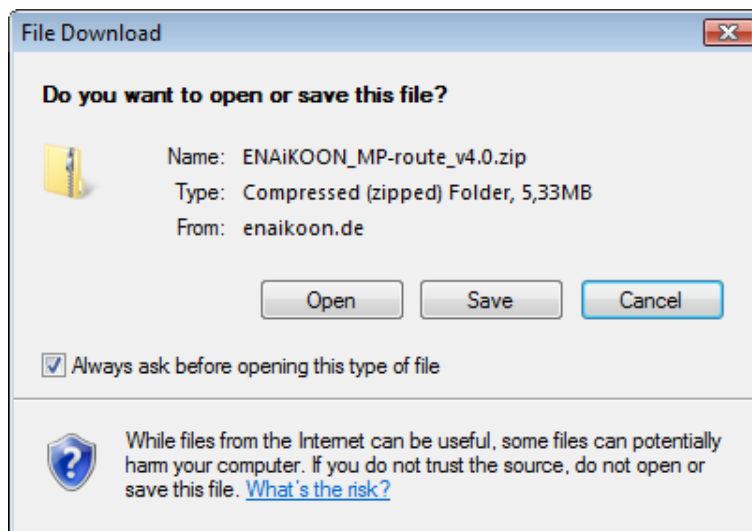
Furthermore the computer must be connected with the internet. Please check the proper installation of the internet access by trying to open a random website in your internet browser.

3.2.1 Installation of ENAIKOON MP-route via the website

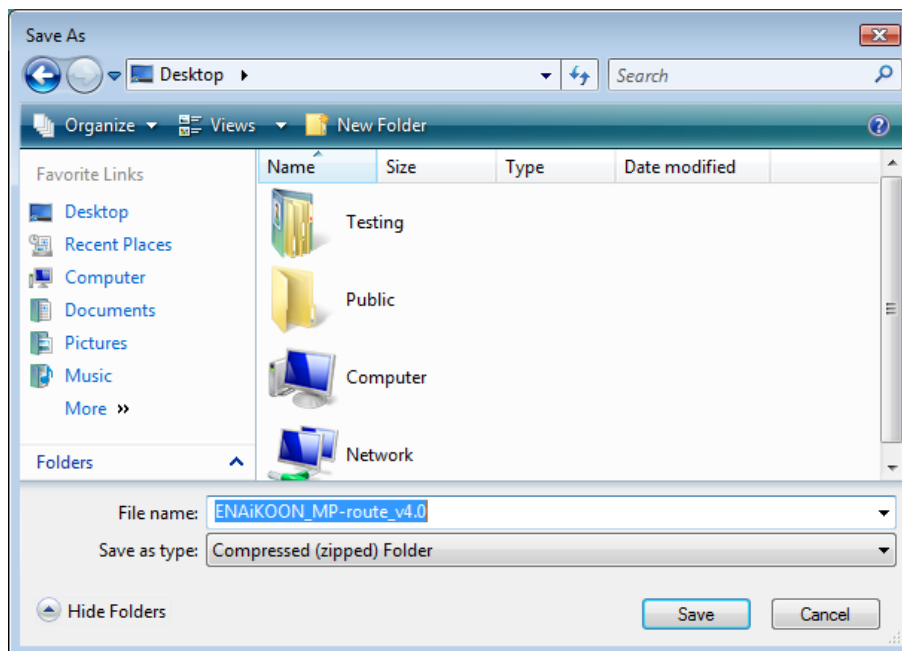
You can find a download of ENAIKOON MP-route on our website www.enaikoon.com. ENAIKOON will send you the download link via E-Mail.

Please download ENAIKOON MP-route [here](#).

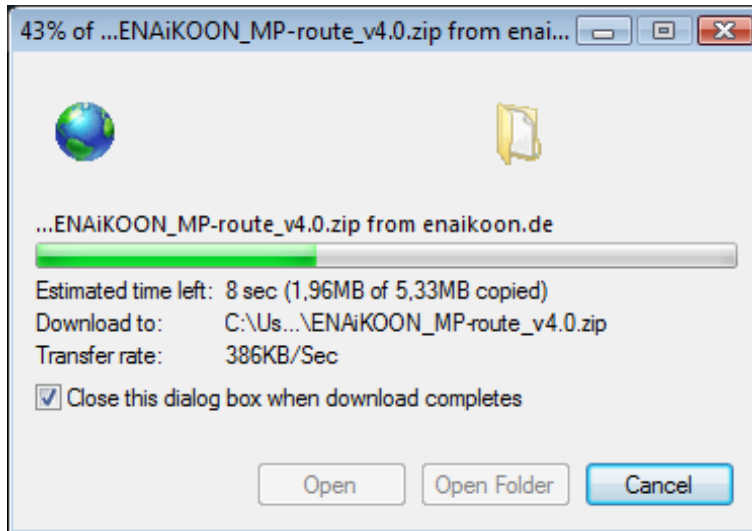
By clicking the hyperlink „here” in the E-Mail the following window will open:



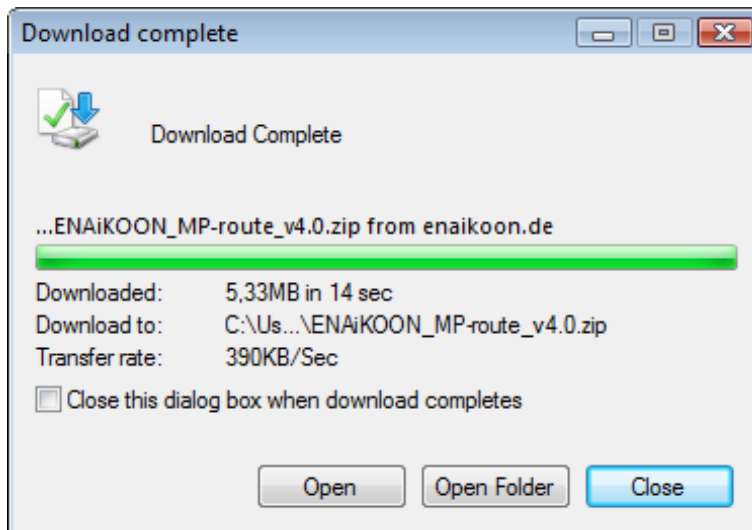
Select „Save” and a new window will open:




Choose a directory where ENAIKOON MP-route will be saved to, preferably your desktop. Click on the „Save” button and the dialogue box with the download progress will appear:




The progress will be displayed as a green bar. As soon as this bar is filled, the download progress is finished and you can close the dialogue box by clicking on the button „Open Folder”. At the same time a new dialogue box will open in which you will find ENAIKOON MP-route ready to be installed on your computer.



You will now find the ENAIKOON MP-route ZIP file on your computer/desktop:

 ENAIKOON_MP-route_v4.0

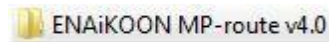
After double-clicking this file a new dialogue box with the content of the ENAIKOON MP-route v4.0.exe file will open.

Name	Type
 ENAIKOON MP-route v4.0.76	Application

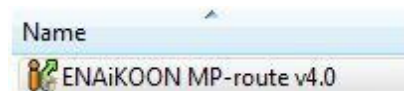
Through double-clicking you will run the „ENAIKOON MP-route v4.0.exe” installation file and you will have to follow the instructions of the [Setup Assistant](#).

3.2.2 Installation of ENAIKOON MP-route from CD

ENAIKOON MP-route is located on CD-ROM in the folder „ENAIKOON MP-route v4.0”.



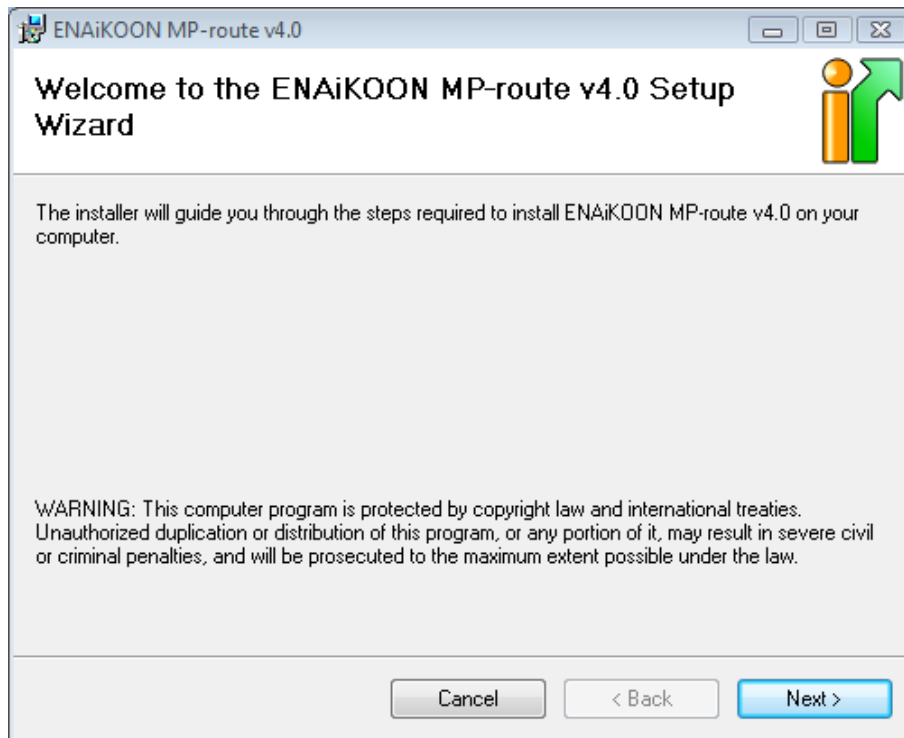
The file prepared for the installation is labelled „ENAIKOON MP-route v4.0”.



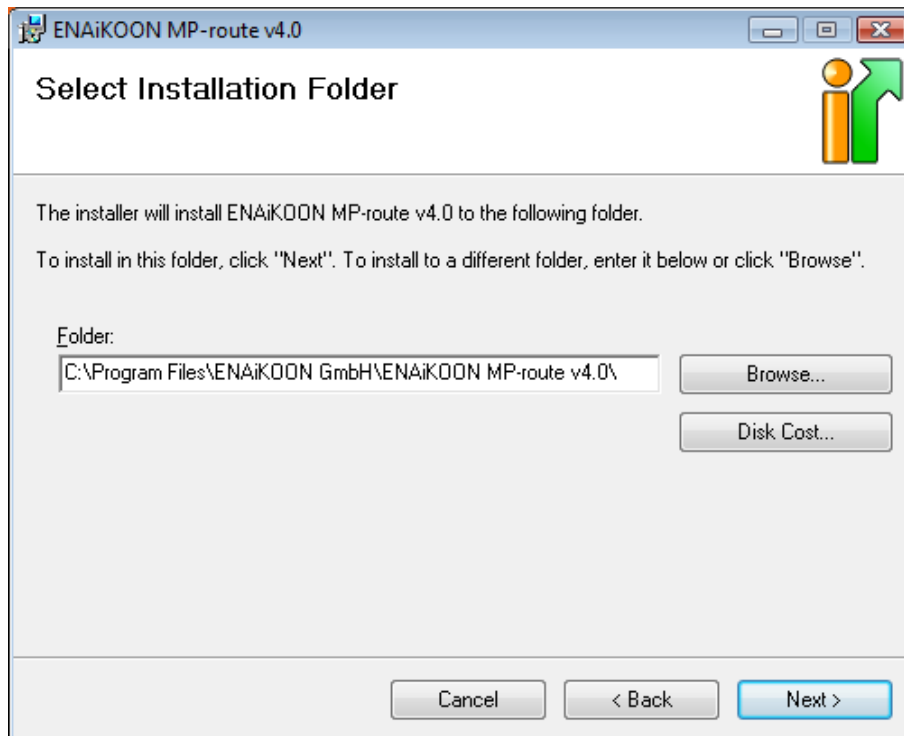
In order to install the program ENAIKOON MP-route, please copy the file „ENAIKOON MP-route v4.0” of the CD into a directory of your choice on your computer. Please run the installationptocrss of „ENAIKOON MP-route v4.0.exe” which you just copied must be launched by double-clicking it and following the instructions of the [Setup Assistant](#).

3.3 The Setup Assistant

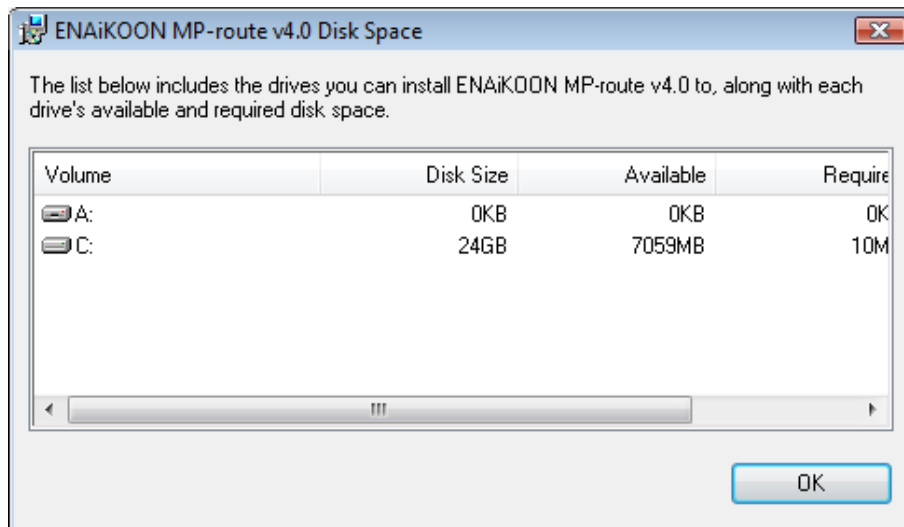
After double-clicking the ENAIKOON MP-route file the following dialogue box will open.



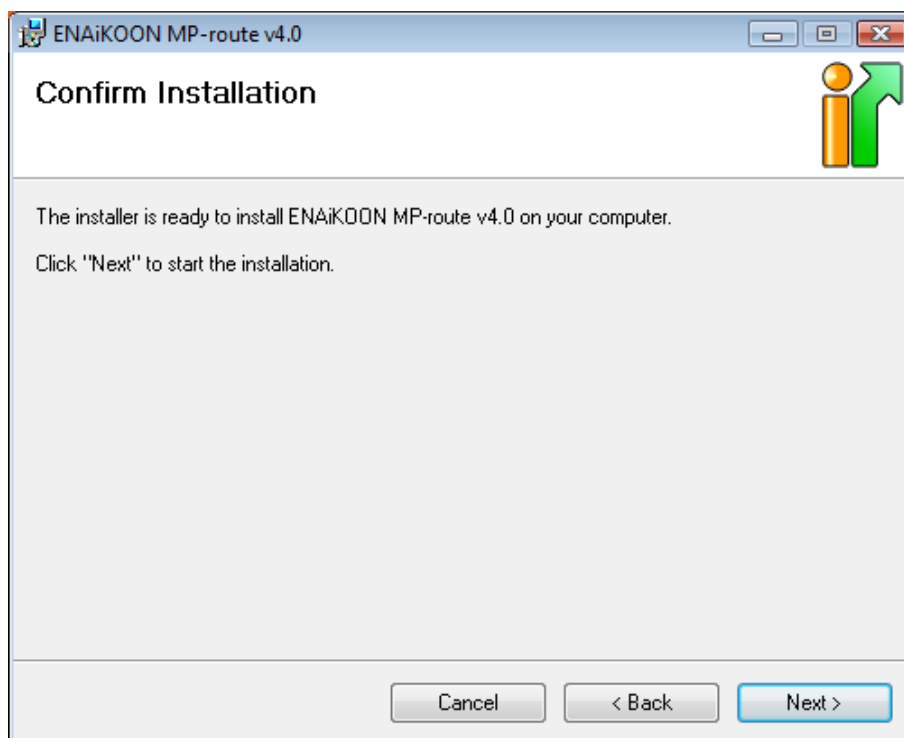
Click the „Next” button in order to proceed to the following window.



Select a location (directory, folder) now and press „Next” to install the program in the chosen directory.



The field „Required Disk Space“ contains a list with directories, ENAiKOOON MP-route v4.0 can be installed to, as well as the required and the available disk space of the directory.

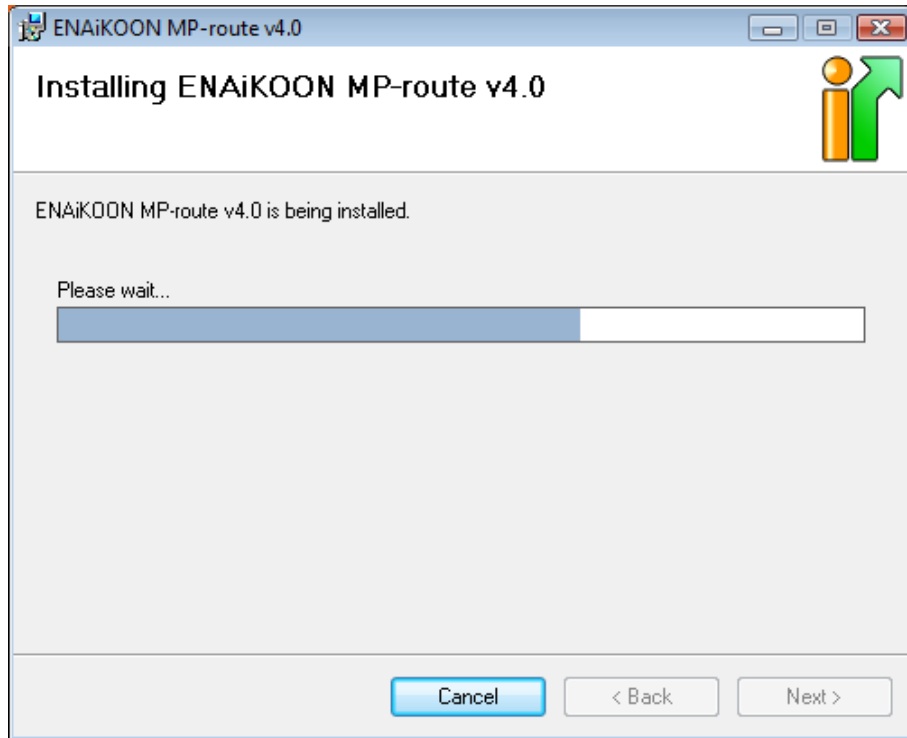


The installation program is now ready for the installation of ENAiKOOON MP-route and you are asked to confirm your information by clicking „Next“.

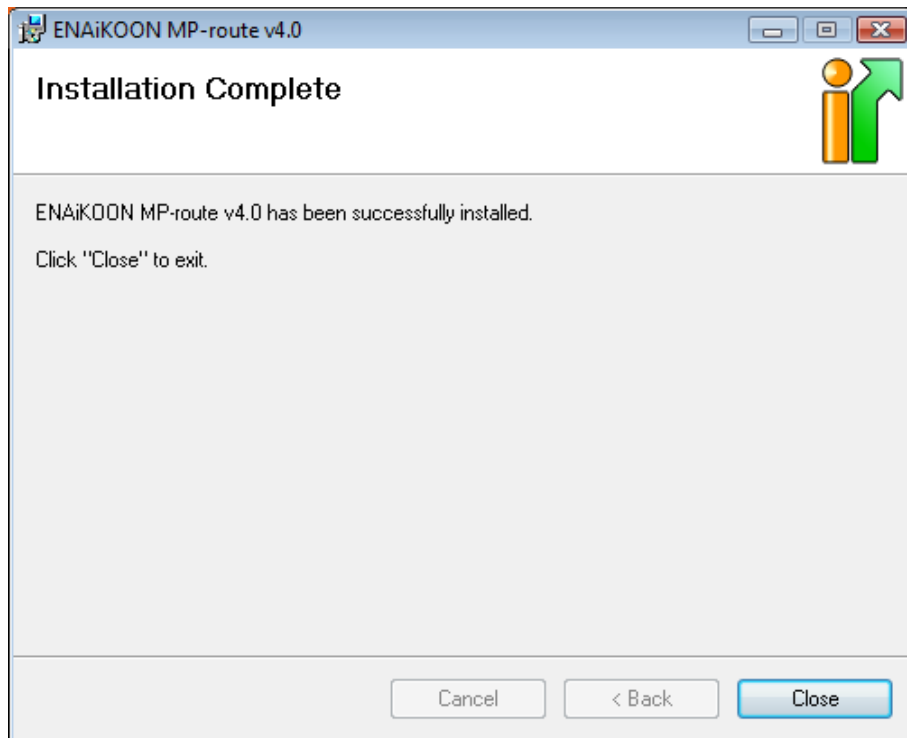
If you wish to change the information you can go back through clicking on „Back“ or you can cancel the installation with the „Cancel“ button.

The installation of ENAIKOON MP-route takes a few seconds. You will see the following progress window during that time.

As long as you can view the progress you can still cancel the installation by clicking „Cancel”.



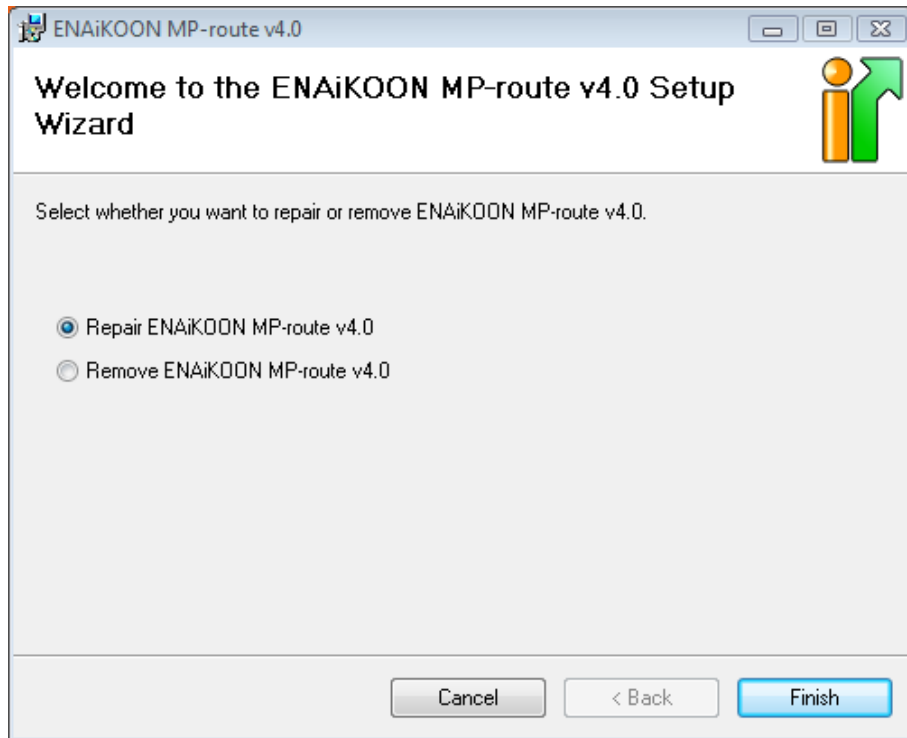
Please click the „Close” button when the installation has finished.



The setup window will now close and the installation routine is complete. During the installation, ENAIKOON MP-route was *automatically* embedded into the program **Microsoft® MapPoint® 2009** and is now ready to use.

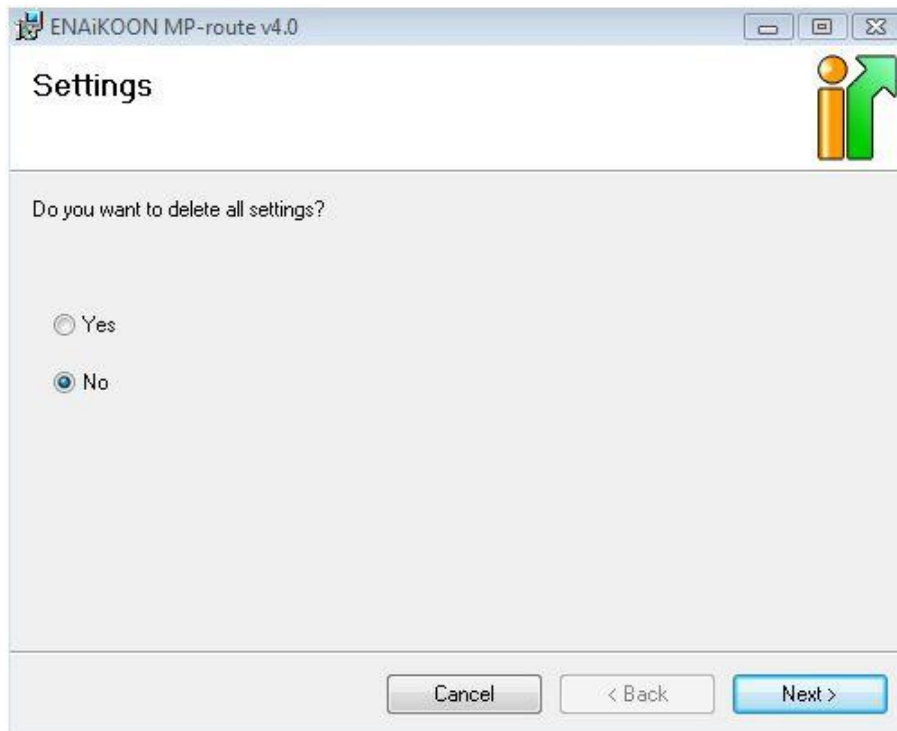
3.4 Reparation and uninstallation of ENAIKOON MP-route

If you want to repair the installation of ENAIKOON MP-route, please run the installation file „ENAIKOON MP-route v4.0.exe“. Afterwards the following window will appear:



Choose „Repair ENAIKOON MP-route v4.0“ and click the „Finish“ button in order to continue with the repair of ENAIKOON MP-route.

If you wish to cancel the process you can click „Cancel“.

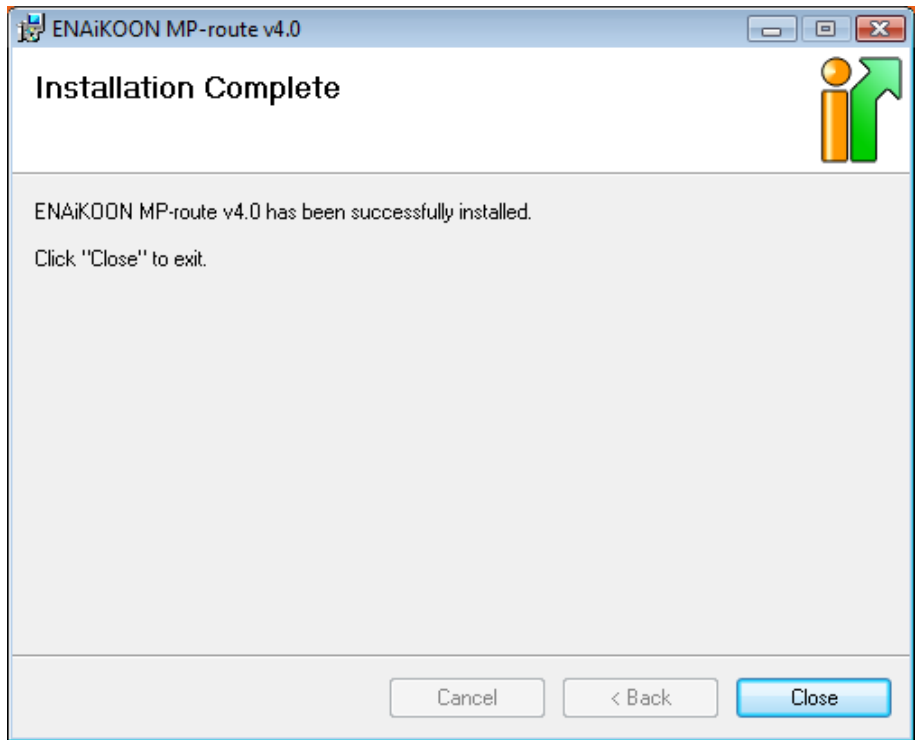
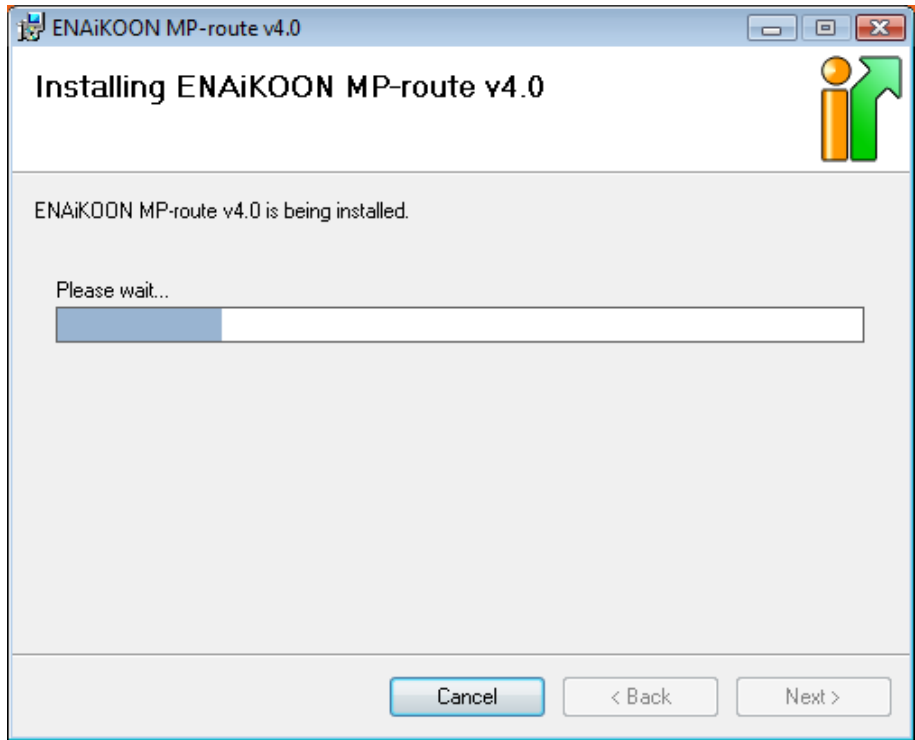


Choose „No” to keep the settings you made with your last start of ENAIKOON MP-route.

If you choose „Yes”, all settings of ENAIKOON MP-route will be deleted and reset to factory defaults.

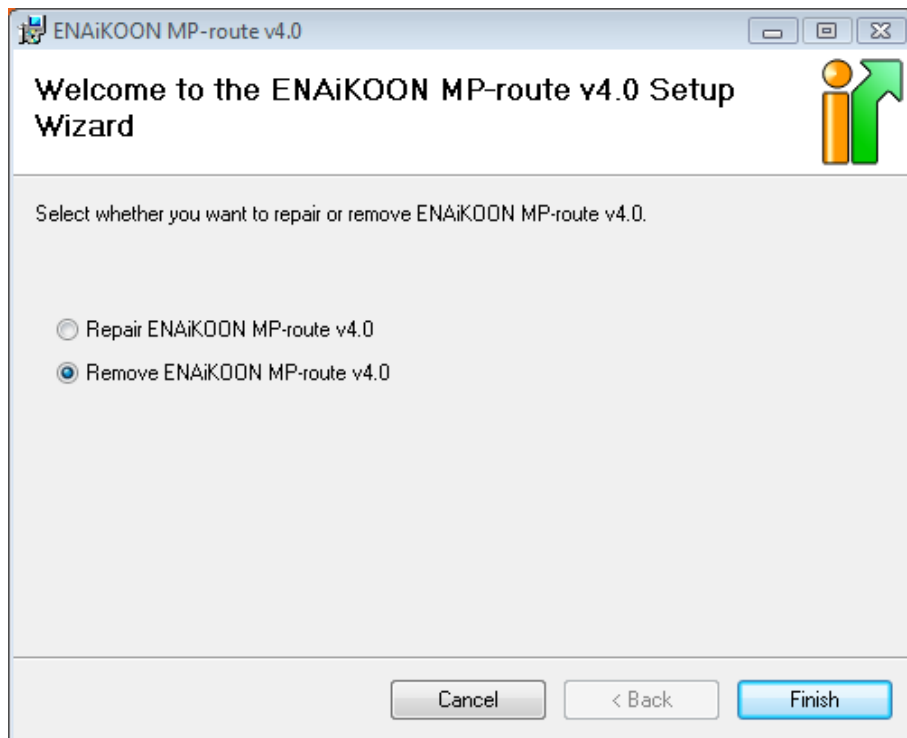
If you wish to cancel the process you can click „Cancel”.

Click the „Next” button and ENAIKOON MP-route will re-install to the same directory you chose at your first installation.

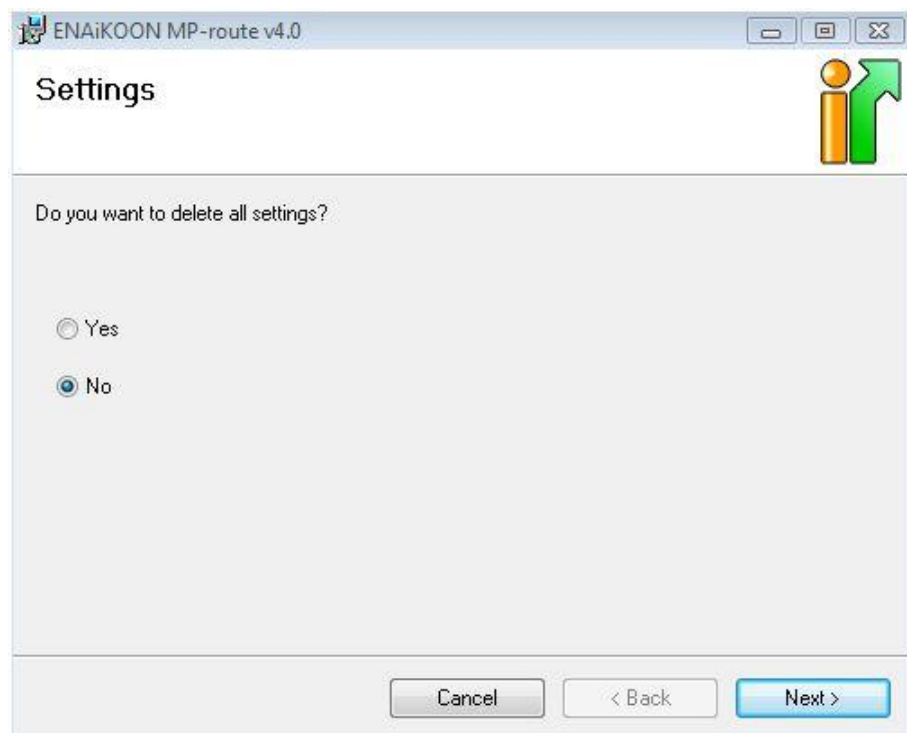


Click the „Close” button and the installation of ENAIKOOON MP-route is repaired.

If you decided to „Remove ENAiKOON MP-route v4.0“, please click „Next“.



If you wish to cancel the process you can click „Cancel“.

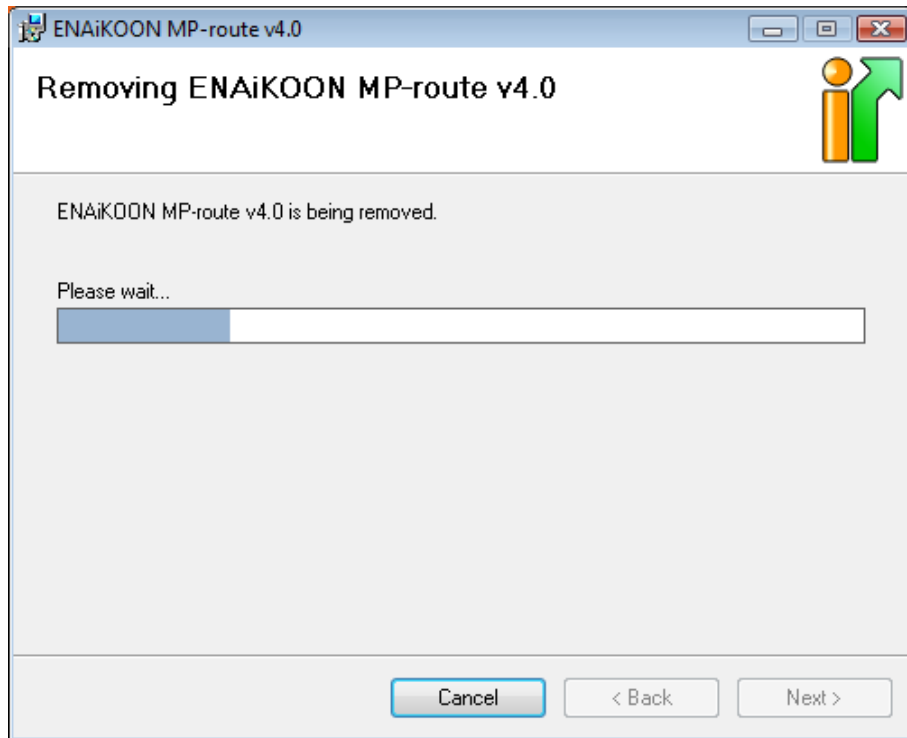


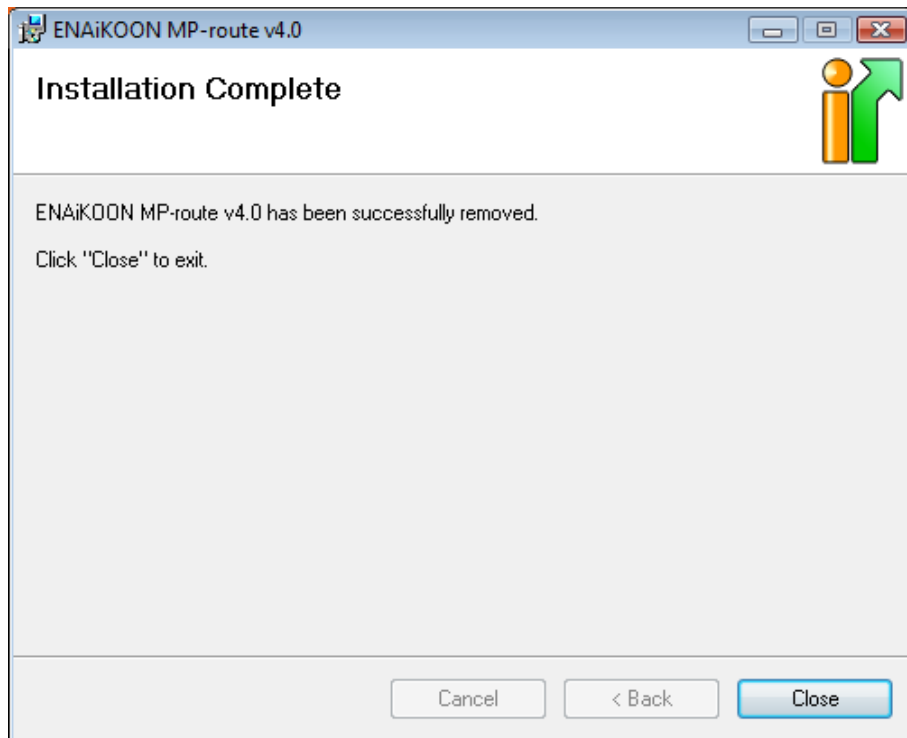
Choose „No“ to keep the settings you made with your last start of ENAiKOON MP-route.

If you choose „Yes“, all settings of ENAiKOON MP-route will be deleted and reset to factory defaults.

Click “Next” and ENAiKOON MP-route will be removed from your computer.

If you wish to cancel the process you can click on „Cancel“.





Click the „Close” button and ENAiKOON MP-route is removed.

In order to reinstall ENAiKOON MP-route please carry out a new installation as described in the chapter [„Installation of ENAiKOON MP-route”](#).

4 Use of the ENAIKOON MP-route software

4.1 Operation modes of the software

If you use Microsoft® MapPoint® you can start the ENAIKOON MP-route plug-in in three different ways:

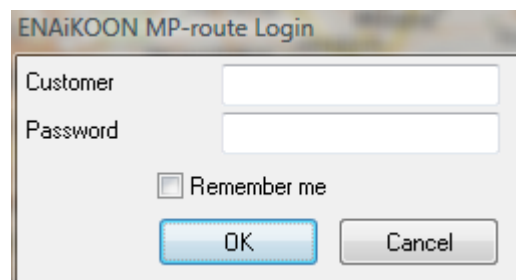
- directly within Microsoft® MapPoint®
- through other programs, you can open the application ENAIKOON MP-route by calling a command over the command line
- via the internet using ENAIKOON fleet-control-web

4.2 Launching ENAIKOON MP-route

Open Microsoft® MapPoint® and click the ENAIKOON MP-route symbol in the toolbar.



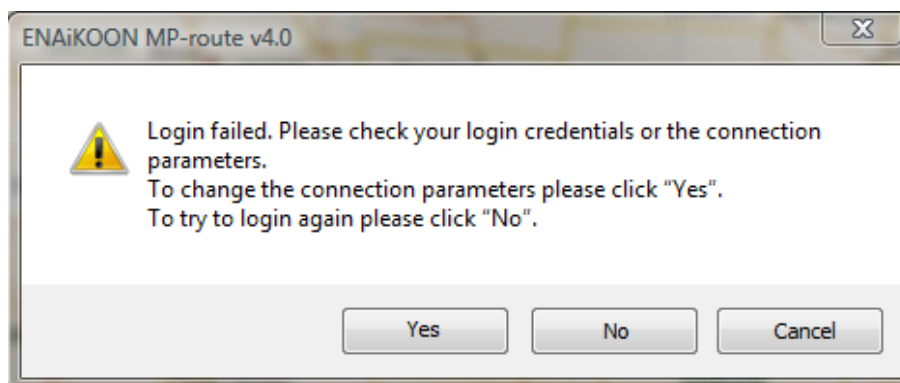
Enter your customer name for the ENAIKOON M2M-commserver as well as your password into the fields of the window that just opened. You received both in line with your registration for ENAIKOON M2M-commserver. By entering your access data, you establish the connection with ENAIKOON M2M-commserver, which will load the vehicle data later.

A dialog box titled "ENAIKOON MP-route Login". It contains two text input fields labeled "Customer" and "Password". Below the fields is a checkbox labeled "Remember me". At the bottom are two buttons: "OK" and "Cancel".

You can change your password in the user settings of ENAIKOON fleet-control-web at any time.

If you do not want to enter your access data every time you start the program, please activate the checkbox „Remember me“.

In case you entered the wrong data, the following error message will appear:



The same message appears if your access data to the ENAiKOON M2M-commsserver is correct but you do not have permission to use ENAiKOON MP-route.

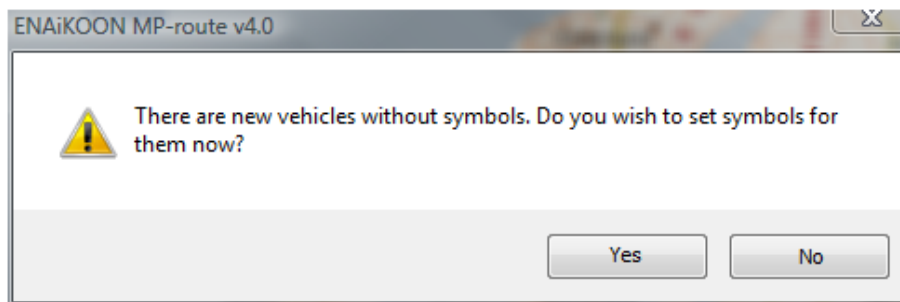
If you only entered a password, the cursor is automatically set into the „Customer“ field. Complete or correct your entry and click the „OK“ button.

Immediately after entering the correct access data, ENAiKOON MP-route loads a list of the vehicles that are assigned to your user account from the ENAiKOON M2M-commsserver.

Afterwards ENAiKOON MP-route loads the configuration as set up by the user.

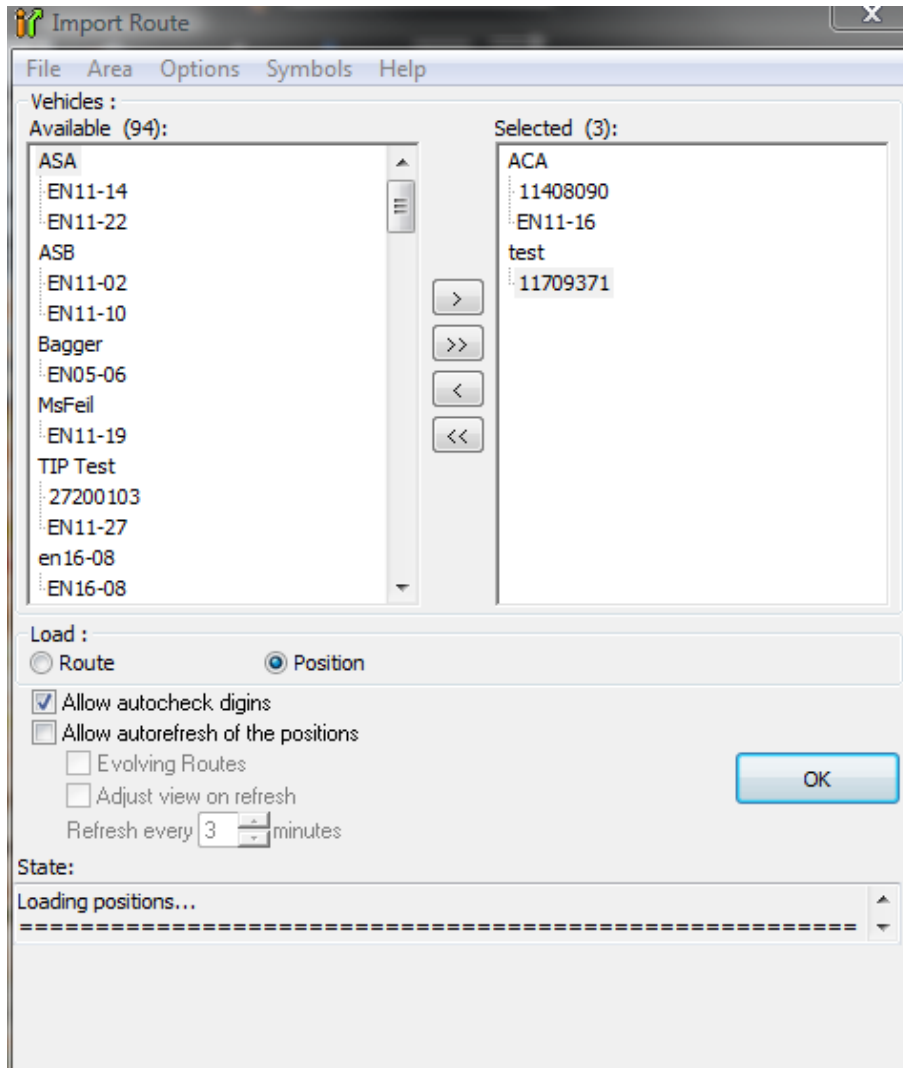
If „Prompt if new vehicles without symbols exist“ is activated in the tab „[Main](#)“ within „Options“ of ENAiKOON MP-route, the following screen message will pop up if there are vehicles that no symbol was assigned to.

Click „Yes“ if you want to assign a symbol to the respective vehicles or „No“ if you want to take care of it later.

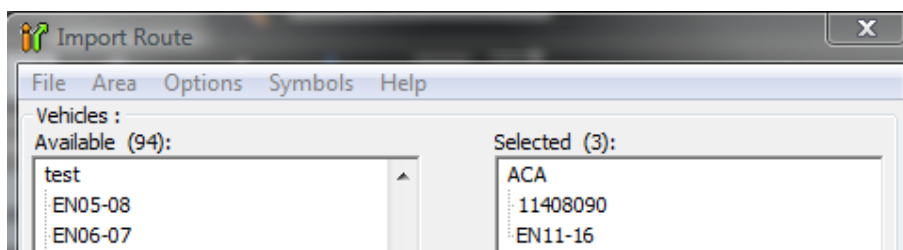


4.3 The main window

After successfully logging on to the ENAIKOON M2M-commserver with your access data, the main window of ENAIKOON MP-route will be displayed.

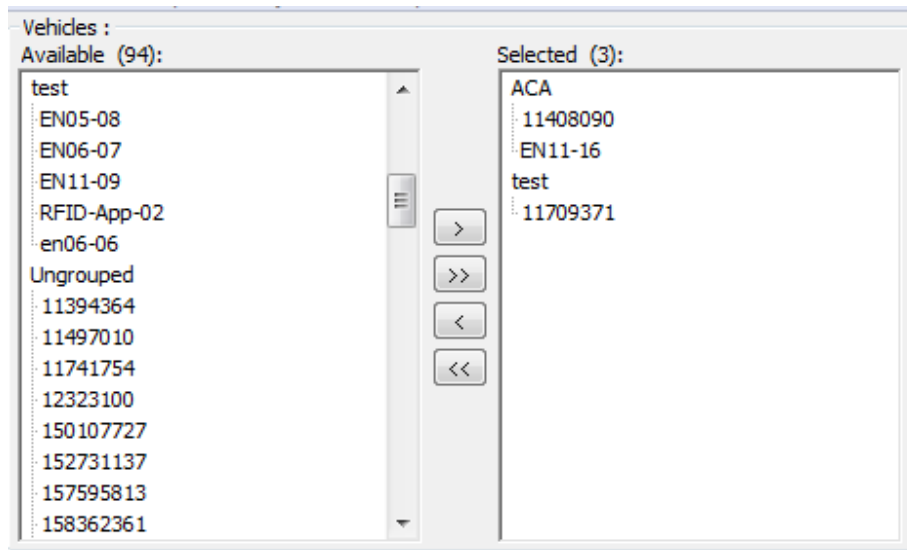


The [Main Menu Bar](#) is located below the title of the window „Import Route“.



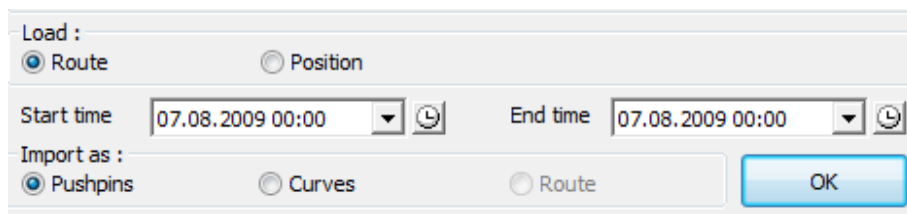
You can customise several functions of ENAIKOON MP-route according to your wishes here.

All vehicles that are assigned to your account are listed in the „Vehicles“ field.

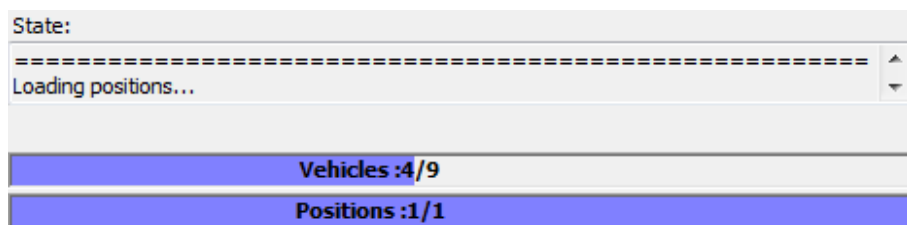


You can here select the vehicles you want data to be displayed of, on the map in Microsoft® MapPoint®.

In the „Display“ window you will find a selection of several display formats for routes as well as for the respective last available positions of your vehicles in Microsoft® MapPoint®.

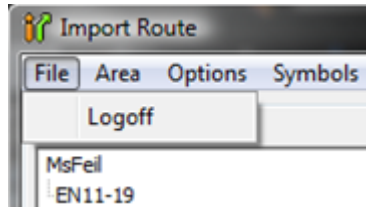


In the [State](#) area in the bottom of the window, you will find information about the progress of the software.



4.4 Logoff

If you want to close the application you should logoff from the ENAIKOON M2M-commserver for safety reasons. Otherwise every other person that can access your computer (be it directly via your desktop or via the internet) can access the vehicle data.



To logoff please click on „File” in the main menu bar. A new dialogue will open. After clicking „Logoff” the ENAIKOON MP-route window will close. The connection with the ENAIKOON M2M-commserver will be disconnected at the same time.

If you want to relaunch ENAIKOON MP-route via the Microsoft® MapPoint® menu you will have to log on as described in the chapter „[Launching ENAIKOON MP-route](#)”.

4.5 User account change

The change to another user account may be necessary if you have access to multiple separate fleets and if you want to analyse them one after the other.

In this case you have to click the button “Logoff” and afterwards log on with the access data of the other fleet as described in the chapter „[Launching ENAIKOON MP-route](#)”.

4.6 Closing ENAIKOON MP-route without logging off

You can close the ENAIKOON MP-route window by clicking ESC on your keyboard. Unlike when the user logs off the connection to the ENAIKOON-M2M-commserver will persist, and you will not have to log on after relaunching ENAIKOON MP-route, if you have not logged off from your computer over Windows in the meantime.

Another possibility to close ENAIKOON MP-route without logging off is to click the „x” button in the top right corner of your main window.

5 Navigated routes or positions

ENAIKOOON MP-route allows the display of current positions of any number of vehicles at the same time using the option „Position” or the display of the navigated routes of multiple vehicles using „Route” and the import as „Pushpins” or „Curves”.

Load :
 Route Position

In order to select one of the display options, at least one mobile object must be selected. Otherwise the selection of the display options is set in grey.

If you did not allow the display of routes in the „[Options](#)” you will only see the choices

[Pushpins](#) and [Curves](#) offered in the selection.

Options

Main | Pushpins | URLs

Log file
ENAIKOOON MP-route.log

Language English

Show Error messages
 Save to log file
 Prompt if new vehicles without symbols exist
 Allow "Import as Route"
 Show status of digital inputs on the agenda
 Show time stamps on agenda
 Time only
 Time and date
 Show addresses on agenda
 ZIP code
 City
 Street
 House number

OK Cancel

Load :
 Route Position

Start time 06.10.2009 00:00 End time 07.08.2009 11:08

Import as :
 Pushpins Curves

OK

If you allow the display of routes, the selection „Route“ will additionally appear.

Before the display options are described in detail you will first receive an introduction into the possibilities of the vehicle selection.

5.1 Vehicle selection

All vehicles that are assigned to your ENAIKOON user account and were not selected yet are displayed in the left column of the „Vehicles“ area.

Select all the vehicles you want the position(s) and navigated route(s) to be displayed of, in the „Available“ column (left column).

Here you can select multiple vehicles in one step by pressing the SHIFT key or the CTRL key as follows:

With the SHIFT key you can click the first and the last vehicle of any area in the list.

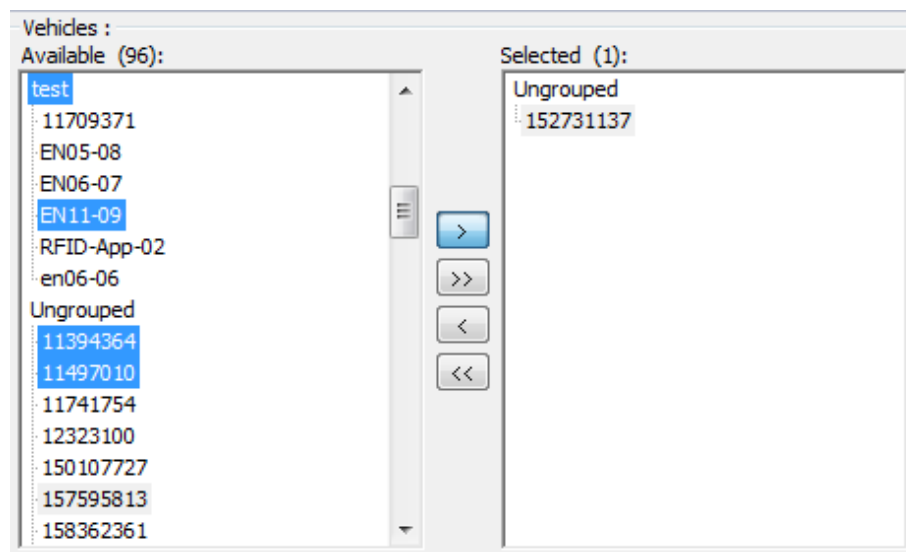
With the CTRL key you can select multiple single vehicles in the list without having to move each single vehicle separately into the right column.

When you finished choosing the vehicles you can add the highlighted vehicles to the list of the selected vehicles by clicking the button with the basic arrow pointing to the right side.

The vehicles you just selected are now displayed in the right column with the title „Selected“ and they are removed from the left column.

If you created an ENAiKOON fleet-control-web vehicle group, you can move all vehicles of a group to the selected vehicles column at the same time. To do this you have to mark the group name by clicking it and afterwards click the button with the basic arrow pointing to the right side.

As shown in the screenshot below you can select multiple groups and vehicles at the same time. Please use the CTRL key and click the group names and vehicles. The selected group names will then be highlighted with blue colour. By clicking the button with the arrow pointing to the right side, the selected groups and names are added to the selected vehicles.



All vehicles of a fleet can be selected for the analysis by clicking the button with the double arrow pointing to the right side.

With a click on one of the arrows pointing to the left side you can remove your selection. Please proceed the same way you did when selecting the vehicles for the analysis, as described above.

The current selection of the vehicles will be saved when closing the program and restored during the next launch of the program.

5.2 Position

You can have the last reported position of all selected vehicles displayed, using this option.

Load :

Route Position

Allow autocheck digins

Allow autorefresh of the positions

Evolving Routes

Adjust view on refresh

Refresh every 3 minutes

OK

If you chose the display format „Position“, the window area below the display options will be adjusted accordingly and the options of the position function will be activated.

If you only want the current positions of the selected vehicles to be displayed, confirm your selection by clicking „OK“.

By activating the checkbox „Allow autorefresh of the positions“, the panel below will be activated and ENAIKOON MP-route will reload and display the position of all selected vehicles after the expiry of the set time.

Load :

Route Position

Allow autocheck digins

Allow autorefresh of the positions

Evolving Routes

Adjust view on refresh

Refresh every 3 minutes

OK

With the function „Adjust view on refresh“, the route of the selected chosen mobile objects will be refreshed promptly as long as the mobile objects move.

The activation of the option „Adjust zoom factor to positions every time“ causes a recalculation of the map section for the selected vehicles after every refresh of the current positions.

The map section will be adjusted in its format, so that all vehicles are visible on the screen in a preferably large magnification of the map scale.

If this option was not activated you can set a map section manually. This will then be used for the position view. The disadvantage of this option is that positions of the selected vehicles outside the displayed map section cannot be displayed. Your advantage is that you can easier orientate and the map section that is relevant for you is available.

The option „Refresh every x minutes“ lets you adjust the interval in which the ENAi-KOON M2M-commsserver updates the position data. The shortest interval that can be set for the refresh is 3 minutes. You can extend this interval by the minute.

By clicking „OK“ you can confirm your entries and display the current vehicle positions.

5.3 Navigated routes

In order to view the position messages of your mobile objects as navigated routes, ENAiKOON MP-route provides three display formats.

Before we take a closer look at these possibilities, the selection of the display period for navigated routes will be explained.

5.3.1 Selection of periods

You can set and vary any period for the respective route view. Please note that the maximum period of time for the display of navigated routes is 31 days.

If you click on the clock symbol right to the triangle by the field „Start time“, the current day 00:00 o'clock will be set as start time.

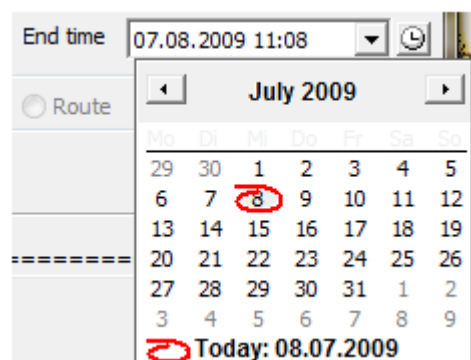
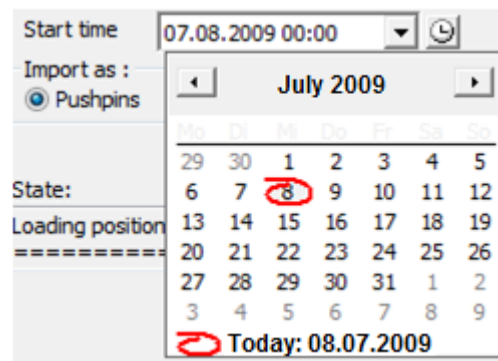
By clicking the triangle right to the date, a calendar will pop up, so you can select the desired day.

Date and time can also be overwritten manually. Click the field to the right of the word „Start time“. You can manually change the dates if date or time is highlighted with blue colour.

If you click on the clock symbol to the right of the triangle by the field „End time“, the current day and the time at which the click is made are entered.

By clicking the triangle right to the date, a calendar will pop up, so you can select the desired day.

Date and time can also be overwritten manually. Click the field to the right of the word „End time“. You can manually change the dates if date or time is highlighted with blue colour. Please note that the maximum period of time for the display of navigated routes is 31 days.



5.3.2 Display options for routes

Three display formats are available for the view of a route.

5.3.2.1 Pushpins

The selection „Pushpins” offers a view of the way points using pushpins or comparable symbols for every location, at which the positioning module effectively registered a position message. You can view the data of single or multiple vehicles at the same time.

The dialog box shows the following settings:

- Load :** Route Position
- Start time :** 07.08.2009 00:00
- End time :** 07.08.2009 12:02
- Import as :** Pushpins Curves Route
- OK** button



5.3.2.2 Curves

The selection „Curves” offers a route view of lines connecting way points. You can either view navigated routes of single vehicles or the navigated routes of multiple vehicles of a fleet at the same time. When selecting multiple vehicles, the routes are displayed in different colours.

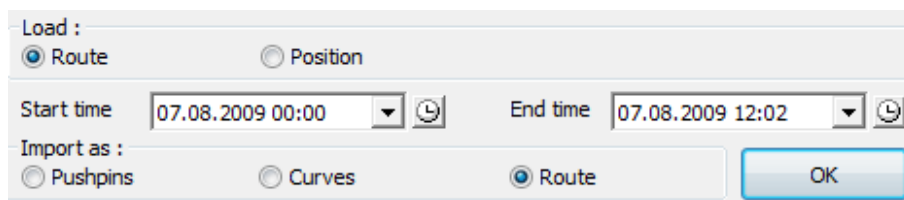
The dialog box shows the following settings:

- Load :** Route Position
- Start time :** 07.08.2009 00:00
- End time :** 07.08.2009 12:02
- Import as :** Pushpins Curves Route
- OK** button



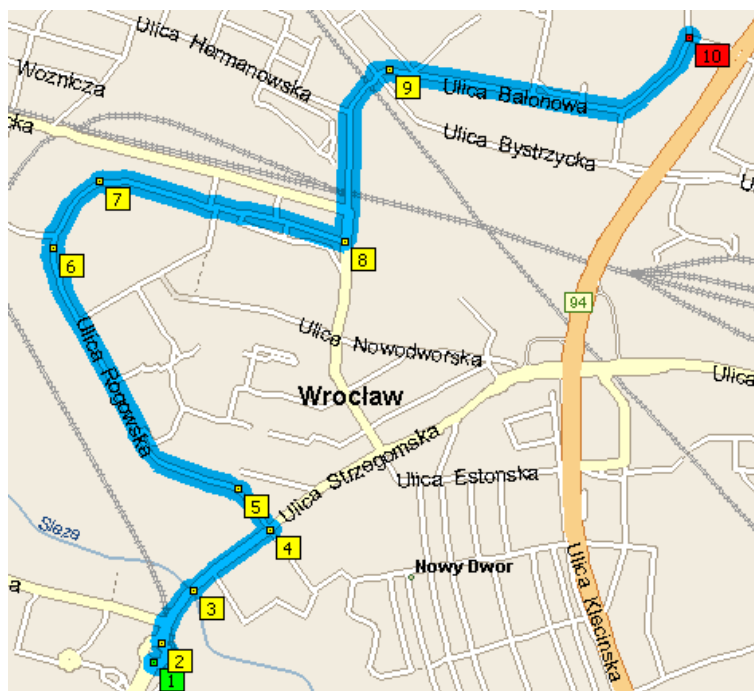
5.3.2.3 Routes

Import as „Route” lets you view the navigated route as a blue line next to the driven roads.



Microsoft® MapPoint® calculates the way points as loaded from the ENAIKOON M2M-commserver as a route with the available route information comparable to a subsequent routing.

The route of only one single vehicle will be displayed at the same time. This option is therefore deactivated if more than one vehicle was selected.



- Green square → Start point/Departure
- Yellow square → Route course
- Red square → End point/Arrival

A list with the single positions of the route is displayed above the map. By clicking a position in the list, an enlarged map section of this position is displayed. By clicking a position on the map, the position will be searched in the list and highlighted with grey colour. At the end of the list you will find a summary of the data of your navigated route.

10:20	2,8	10 Arrive 51,1234 16,9735
 ** Warning: Missed 10:18 arrival time **		
SUMMARY		
Driving distance: 2,8 miles		
Trip duration: 8 minutes		
Driving time: 8 minutes		
Cost: 0,96 €		

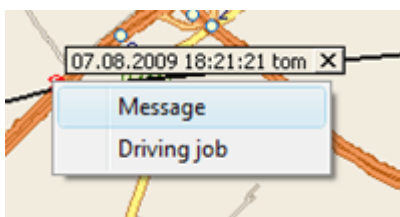
Please notice that the route view is a subsequent plan of the route. As a result of the subsequent calculation, differences between the routing of Microsoft® Map-Point® and the actual driven route may occur.

6 Messages and driving jobs

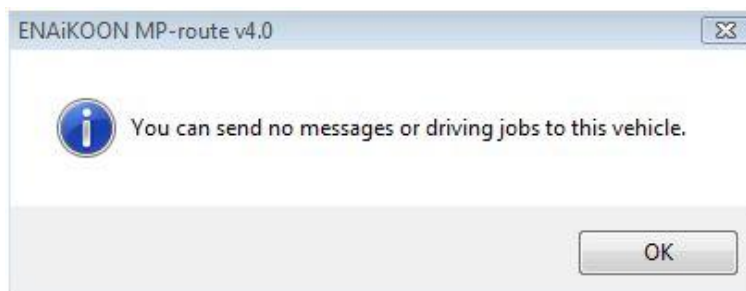
ENAIKOON MP-route provides the function to send messages and driving jobs to your mobile objects directly over the map view.

You can use the position and route view using pushpins and curves for this purpose.

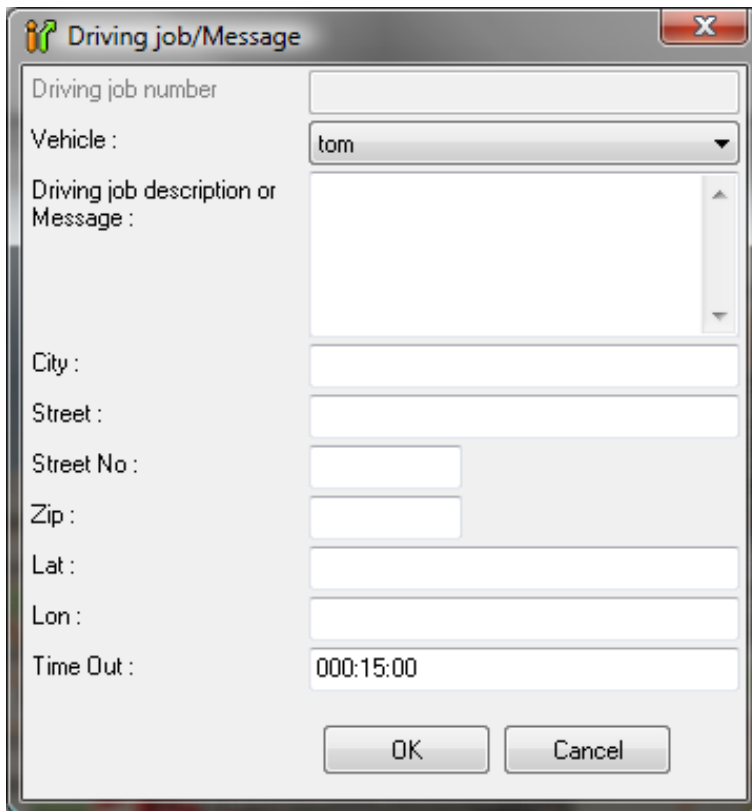
Close the main window using the „x” button. Move the mouse pointer over the pushpin or the driving direction arrow of a vehicle, and push the right button of your mouse when in the respective map view. You will see the following selection in the map window.



An error message will pop up if you try to send a message/driving job to a vehicle that does not have a suitable device installed which supports the message reception.

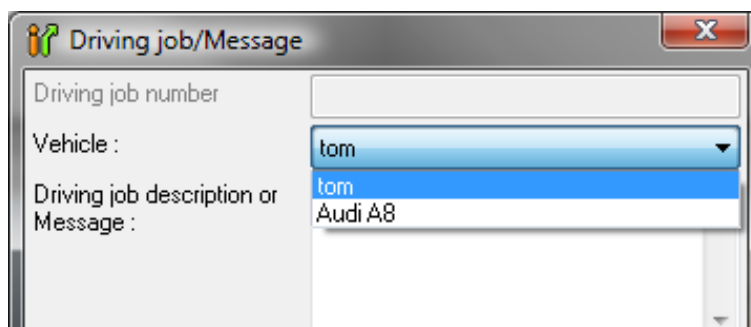


If you want to send a driving job or a message, the following dialogue box will open.



You can enter the following information in the window:

- **Driving job number**
Any text or number to identify the driving job in ENAIKOON fleet-control-web later.
In case you chose „Message”, the field “Driving job number” will be deactivated.
- **Vehicle name**
You will here see the name of the vehicle, which you selected with a right click in the map.
If you wish to change the vehicle you want to send the message/driving job to, you can click the little triangle to the right of the vehicle name.

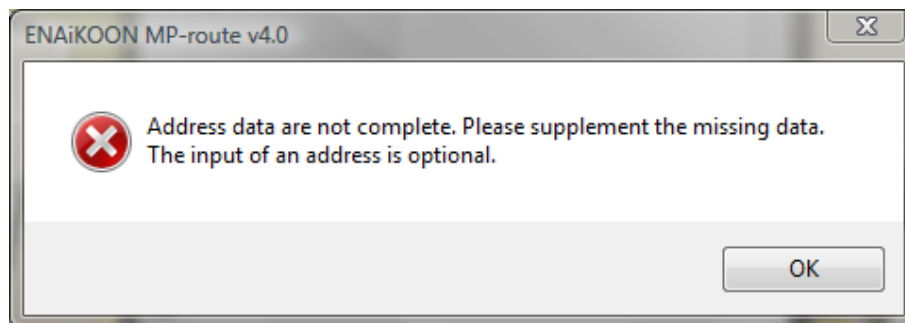


After clicking the triangle a list with all mobile objects of your account will appear, that are connected to a screen.

- **Driving job description**

Please enter the job/message you want to send. The following information will be transmitted to the mobile object along with the job/message you entered.

The address data has to be entered completely. Otherwise you will receive the following error message.

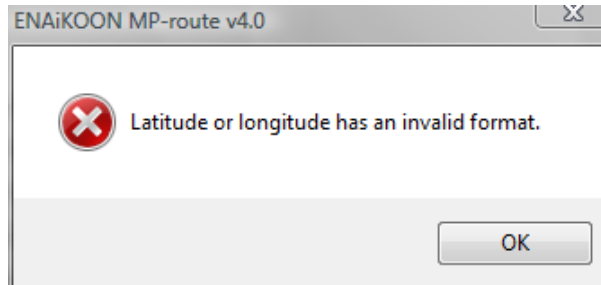


The address data/latitude and longitude can directly be passed to the navigation software that is installed on the device, if a suitable mobile phone is used or a suitable device is connected to the on-board computer in the vehicle.

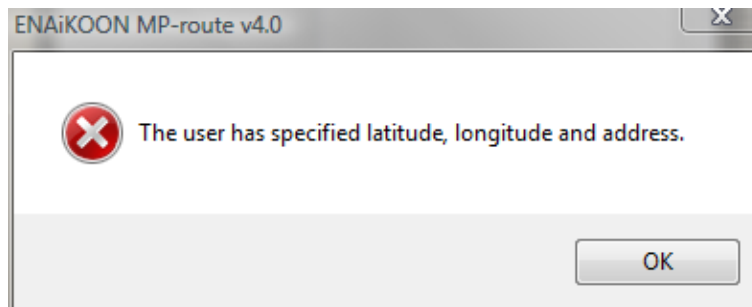
If the mobile device does not provide the navigation function, you cannot make any entries in the following fields:

- City
- Street
- Street No
- Zip
- Lat
- Lon

Latitude and longitude have to be entered in the format lat 52.52169 /long 13.32436 i.e. a decimal point is used, not a decimal comma. Otherwise the following error message will appear:



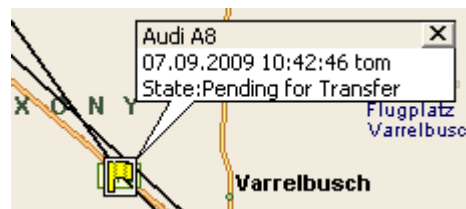
You can enter either an address or a GPS coordinate, but not both at the same time.



- **Time Out**

You can indicate for how long the ENAIKOOON M2M-commserver should try to transmit the message to the mobile device. If the transmission is not successful within the indicated time, a so called „Time Out“ error message will be generated, i.e. you will be informed that the transmission failed. You can then assign a driving job to another vehicle after the “Time Out”.

If you sent out a driving job or a message, the chosen pushpin will change. The chosen pushpin will be displayed as a yellow flag after sending the message via ENAIKOOON MP-route.



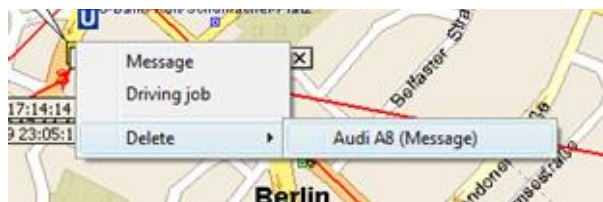
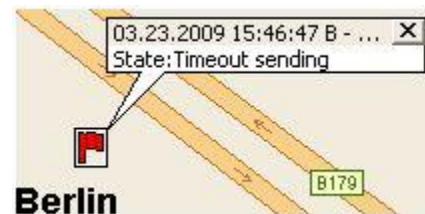
Additional information about the progress of the data transmission will appear in the label of the flag.



If the transmission to the mobile object was successful and the receipt was confirmed, the colour of the flag changes from yellow to green.



If the transmission of the driving job/message could not be carried out successfully before the „Time Out“ a red flag will be set.



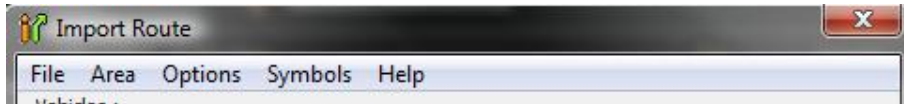
You have the possibility to delete sent messages from the display of the driver. To do that you have to right click the pushpin and choose the driving job or message you want to delete.

In order to confirm the deletion of the message, you need to click the left mouse button on the mobile object.

In the example a message that should be deleted was sent to the mobile object with the serial number 26279016. After the message is deleted, the mobile object will be displayed with the symbol you chose for this mobile object, in the map window.

7 Main menu bar

The main menu bar lets you manage and customise ENAiKOOON MP-route in order to adjust the display format and information content of the analysis according to your wishes.



- [File](#) → Logoff
- [Area](#) → Create and manage areas under surveillance
- [Options](#) → Display options and management
- [Symbols](#) → Adjust vehicle symbols
- [Help](#) → User manual, send log files to ENAiKOOON support, About

7.1 File

Under the menu item „File“ you can find the option „Logoff“, to disconnect from the ENAiKOOON M2M-commserver.

7.2 Area

Allowed and forbidden areas are summarised in „Under Surveillance“.

ENAiKOOON fleet-control-web is able to analyse position messages of vehicles that are received by the ENAiKOOON M2M-commserver, and to check whether a vehicle moved into a forbidden area or if a vehicle left an allowed area.

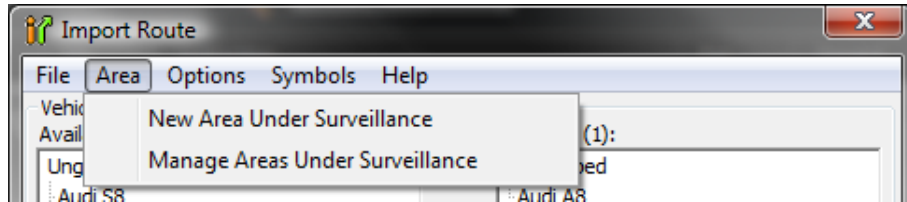
If this is the case and if an e-mail address was set up to receive according e-mail messages, ENAiKOOON fleet-control-web generates an according e-mail and sends it to the provided e-mail address immediately.

Such an e-mail typically looks as follows:

The vehicle Audi B-AH-411 (25000780) has entered the supervised area "Danziger Straße" at Tuesday 07/07/2009 12:34:13.

Best regards
Geofence information system

In the menu point „Area” you will find two possible selections. Either you can create new areas under surveillance or you can manage existing areas under surveillance.



The following chapter describes how to create new areas under surveillance and how to manage them.

7.2.1 Create new area under surveillance

Close the main window using the „x” button.

In order to create a new area under surveillance you first have to set a radius around your chosen place in the map window of Microsoft® Map-Point®.

- ⊙ Please use the “radius tool” of the „Drawing menu” which you can find in the menu bar at the top of the screen.



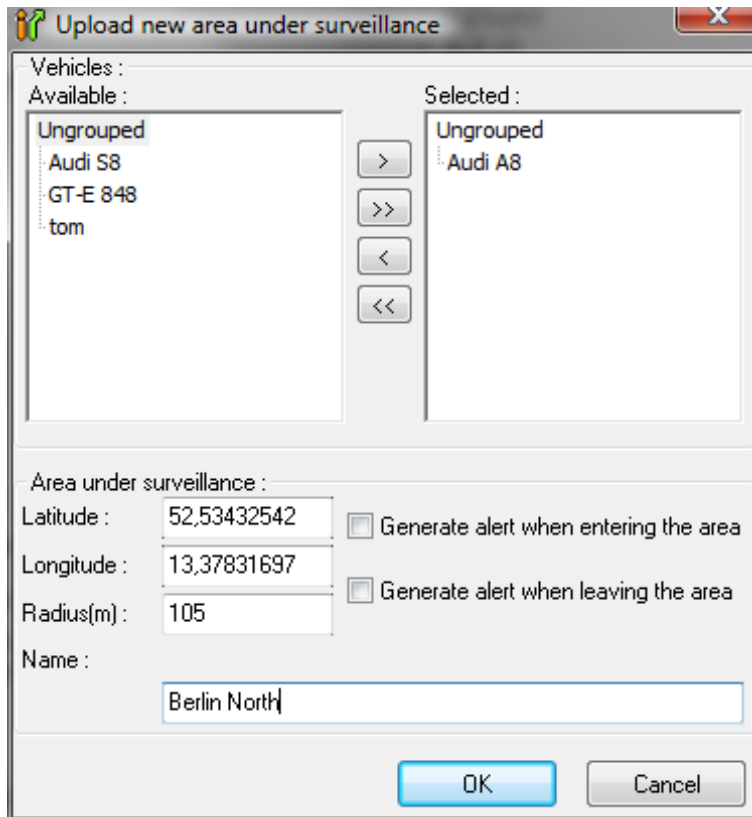
If this menu bar is hidden you can activate it in Microsoft® MapPoint® as follows:
„View” → „Toolbars” → „Drawing”.

After you selected an area under surveillance using the radius tool please click the ENAIKOON MP-route symbol.



Go to „Area” in the main window of ENAIKOON MP-route and select the option „New area under surveillance”.

The following window will open:



Please select at least one of the available vehicles, by clicking it in the list of available vehicles and move it to the list of selected vehicles by using the basic arrow.

Thereby you can assign the vehicle to the field you created. Where required you can change the coordinates of the centre of the circle as well as the diameter. The fields „latitude”, „longitude” and „radius” are provided for this purpose.

Please notice that an area under surveillance needs to have a radius of at least 50m.

If the radius you created is entered by a vehicle that is assigned to the area, you can have a report sent to you.

The following report options are offered:

- Send a report as soon as the area under surveillance is entered
- Send a report as soon as the area under surveillance is left

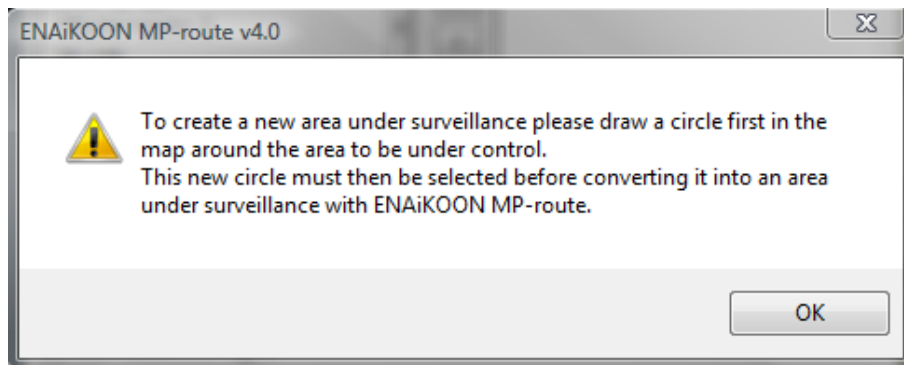
In order to generate a report automatically please activate the respective checkbox of the window. The reports are sent to the e-mail address that is stored in ENAIKOON fleet-control-web.

The system suggests a name under „Name” that is made up of longitude, latitude and radius. You can replace it by an own name at any time. By clicking the „OK” button your entries are confirmed and the data is automatically transmitted to the ENAIKOON

M2M-commserver. The named position is now also available in ENAIKOON fleet-control-web for example.

The „OK“ button is only active if you selected at least one mobile object to assign an area to.

If you did not highlight a radius in the map window of Microsoft® MapPoint®, the following error message will pop up if you click „New area under surveillance“:



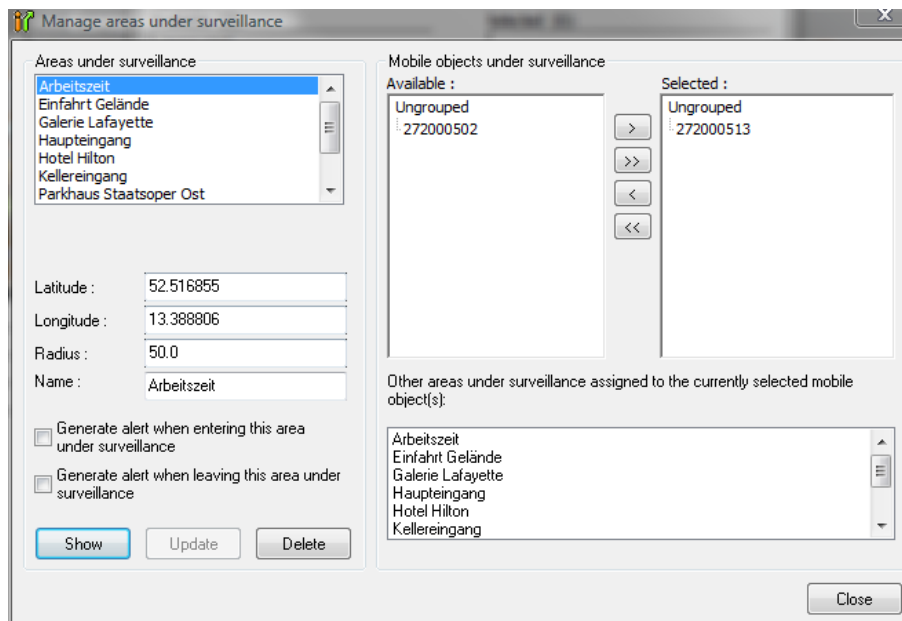
In ENAIKOON fleet-control-web you can check if the named positions were successfully transmitted to the ENAIKOON M2M-commserver, by viewing the list of the destinations.

Destinations (3)									
Add Delete									
		Name A	Street	House number	ZIP	City	Purpose of the trip	Tolerance	Reason for the Stop
<input type="checkbox"/>	23	17209/Altenhof/Dorfstr.	Dorfstr.	1 - 9999	17209	Altenhof		50	
<input type="checkbox"/>	23	Berlin North						105	
<input type="checkbox"/>	23	ENAIKOON Zentrale	Helmholtzstraße	8	10587	Berlin		250	

You can find further information on how to change the data of a destination in ENAIKOON fleet-control-web using the manual or the online support regarding ENAIKOON fleet-control web.

7.2.2 Manage areas under surveillance

The window that will open after selecting „Manage areas under surveillance” from the menu bar is divided into two main parts. On the left side you can find the areas under surveillance. The right side shows the mobile objects that are assigned to your account and the areas that are assigned to one or more mobile objects.



The GPS data, the radius and the name of the area under surveillance are displayed for every area under surveillance. These fields can be customised according to your wishes. The stated GPS data (longitude, latitude) describe the centre point of the area under surveillance. Using „Radius” you can set up the size of the area under surveillance.

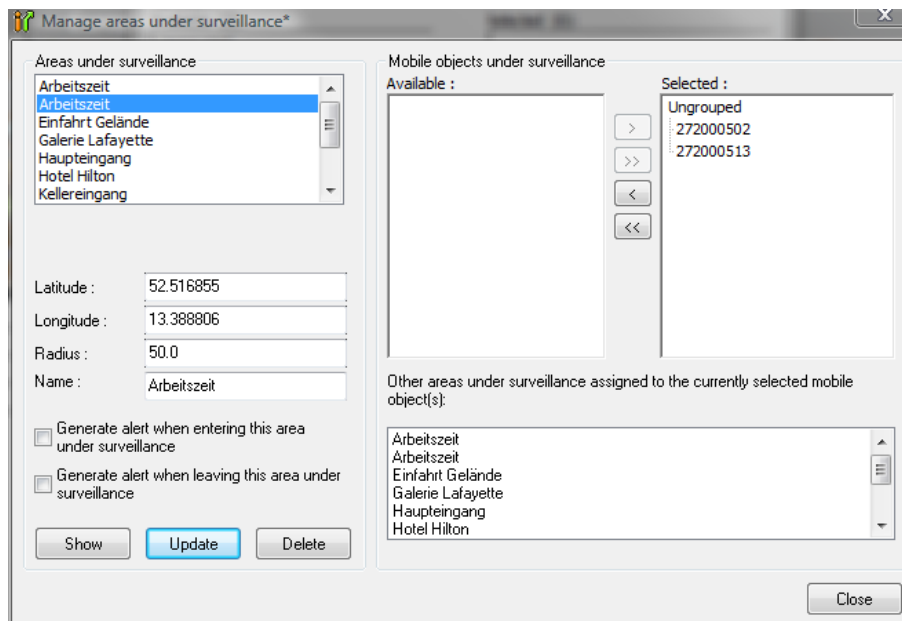
In order to have a report sent please activate at least one of the checkboxes. Optionally you can have a report sent to you as soon as the respective vehicle enters/leaves the area under surveillance.

By clicking the „Show” button, you can have the blue highlighted area under surveillance displayed in Microsoft® MapPoint®. A selected area under surveillance can be removed from the list by clicking „Delete”.

Under „Mobile objects under surveillance” you can assign one or more mobile objects to every area under surveillance.

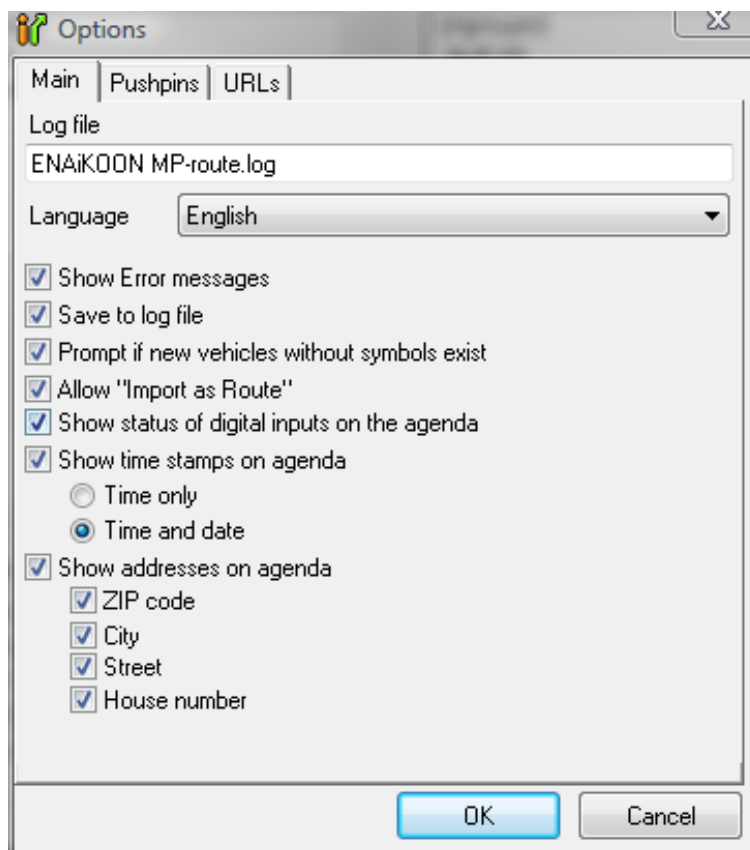
If you selected a mobile object all areas under surveillance are loaded for the assigned mobile objects by the ENAIKOON M2M-commserver.

In order to transmit your changes to the ENAIKOON M2M-commserver, click „Update”. The „Update” button will be active as soon as you carried out changes to the areas under surveillance or if you changed the assignment between mobile objects and areas under surveillance.



7.3 Options

The „Options“ window is separated into three tabs: Main, Pushpins and URLs. These help you manage ENAIKOON MP-route.



7.3.1 Main

Log file

Name of the file in which ENAIKOON MP-route logs all internal program processes, as long as the function „Save to log file“ is activated in „Options“.

Language

You can here choose the language ENAIKOON MP-route will use.

At this time a file is available for German and English. If you require another language please contact your seller.

Show Error messages

Activates/Deactivates the display of error messages.

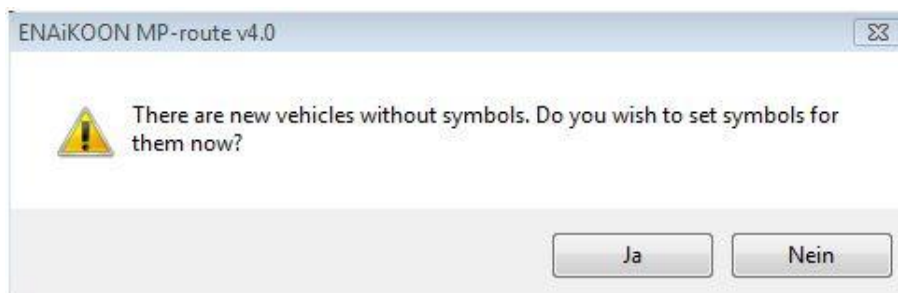
Save to log file

Activates/deactivates the storage of the software protocol into the log file that is configured above.

Prompt if new vehicles without symbols exist

Activate/deactivate this function if you want ENAIKOON MP-route to check if symbols are assigned to your vehicles when starting the program.

If you have not assigned symbols to all your vehicles the following message will show:



Allow „Import as Route“

With this function you can activate the display mode „Routes“.

Show status of digital inputs on the agenda

Activates/deactivates the status display of the digital inputs on the agenda.

Show time stamps on agenda

Activates/deactivates the display of date and time on the agenda. You can have only time or date and time displayed.

Show addresses on agenda

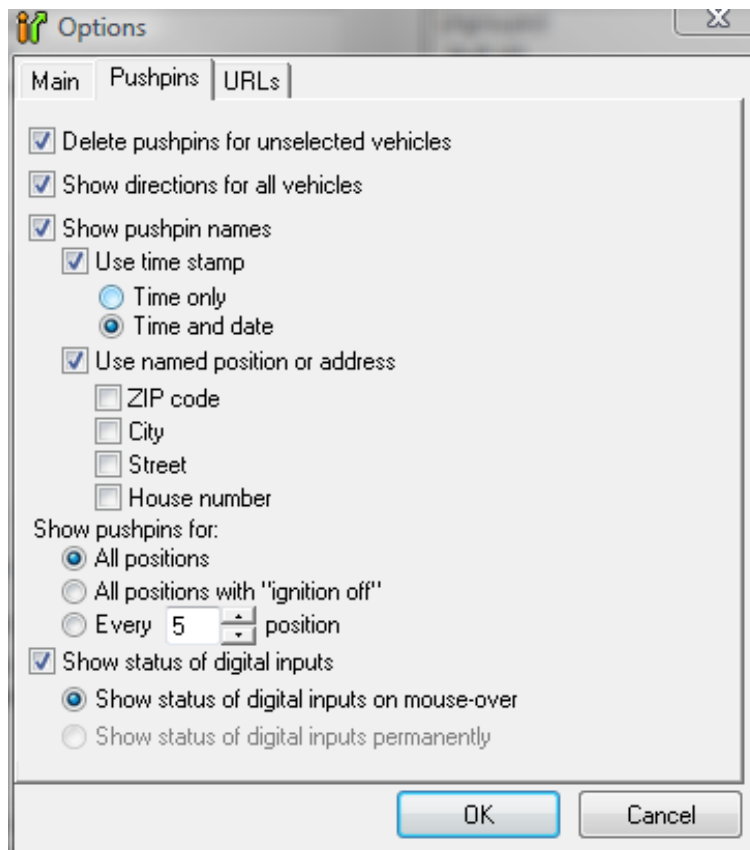
This function is only available for the display mode „Position“. If you selected the mode „Route“ the field „Show addresses on agenda“ is not active.

Activates/deactivates the display of the address of the last position that was saved on the ENAIKOOON M2M-commserver. You can activate or deactivate the following parts of an address individually:

- ZIP code
- City
- Street
- House number

7.3.2 Pushpins

The tab „Pushpins“ allows to configure the display options for pushpins.



Delete pushpins for unselected vehicles

You can activate/deactivate the deletion of already existing vehicle symbols in the map window.

If this option is deactivated, vehicle symbols are not deleted in the map window, before the vehicle symbols to be displayed are displayed by a new call.

If this option is activated, vehicle symbols are deleted in the map window before the vehicle symbols to be displayed are displayed by a new call.

Show directions for all vehicles

This option activates/deactivates the display of direction arrows for all displayed mobile objects

If you activated this option, direction arrows are displayed for all mobile objects. Thereto all previously set symbol assignments are suspended for the duration of the activated direction display.

If this option is deactivated later, the assignments of a symbol will again take effect to all mobile objects.

Show pushpin names

Activates/deactivates the display of additional information for the pushpins.

Use time stamp

Time only

If this option is selected, the time, the position was calculated at, will additionally be displayed next to the name of the vehicle.



Time and date

If this option is selected, the time and date, the position was calculated at, will additionally be displayed next to the name of the vehicle.



Use named position or address

Activates/deactivates the display of the address for each pushpin. The option „Use named position or address“ can only be activated if the display mode „Position“ was selected in the main window of ENAIKOON MP-route.



You can activate and deactivate the following parts of an address according to your requirements:

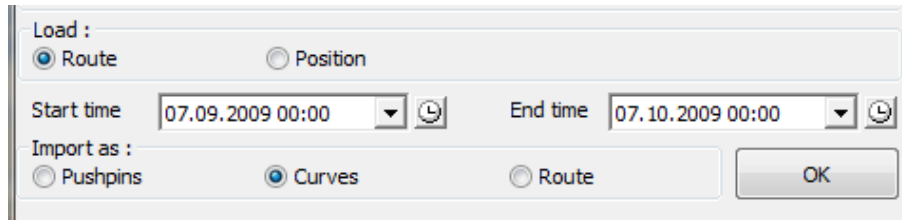
- ZIP code
- City
- Street
- House number

Show pushpins for

Using this selection you can influence the display of the pushpins. As default, all positions that are saved by the ENAIKOON M2M-commserver for the chosen period will be displayed.

Besides the default setting, you have the possibility to only have positions with the status „ignition off” displayed, or „Every x position” where x can be between 2 and 100.

The option „Every x. position” can only be activated if the display mode „Route” is selected in the ENAiKOON MP-route main window.



Show status of digital input

You have the possibility to display the status of digital inputs of your mobile objects. This option is only available if you selected the display mode „Position” in the main window of ENAiKOON MP-route.



Two display modes are available:

Show status of digital input on mouse-over

The main window has to be closed using the „x” button. Move your cursor over the required pushpin on the map.

Show status of digital input permanently

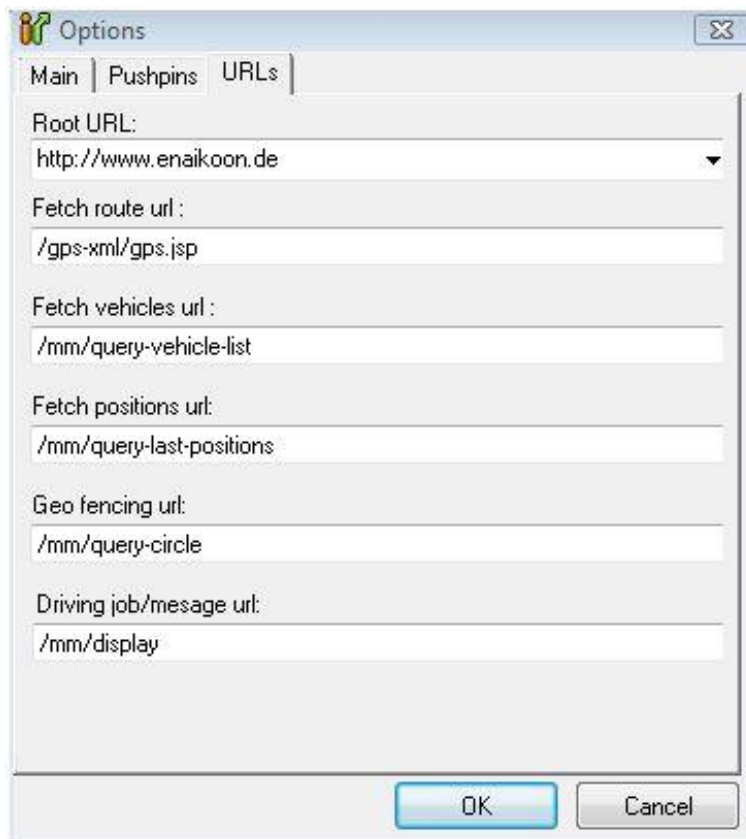
If you decide to have the status of the digital input displayed permanently, the pushpins are replaced (see chapter „Show status of digital input”).

7.3.3 URLs and data paths

In case you use another provider than ENAIKOON to capture your position data, you can change the settings of the server addresses in this window.

Only customise these settings if you surely know the required parameters for the individual URLs and if you instructed another provider than ENAIKOON with the storage of your position data.

You can request the URL addresses for the position data storage from your provider.



Root URL

Please enter the host name or the IP address of the server that holds the paths for the data that is to be received. The address <http://www.enaikoon.de> connects you with the ENAIKOON M2M-commserver.

Fetch route URL

Please enter the path that is used for the request of the routes.

Default: `/gps-xml/gps.jsp`

Fetch vehicles URL

Please enter the path that is used for the request of the vehicles, that are assigned to a user account.

Default: `/mm/query-vehicle-list`

Fetch positions URL

Please enter the path that is used for the request of the current positions of all vehicles.

Default: /mm/query-last-positions

Geo fencing URL

Please enter the path that is used to load and store the areas under surveillance.

Default: /mm/query-circle

Driving job/message URL

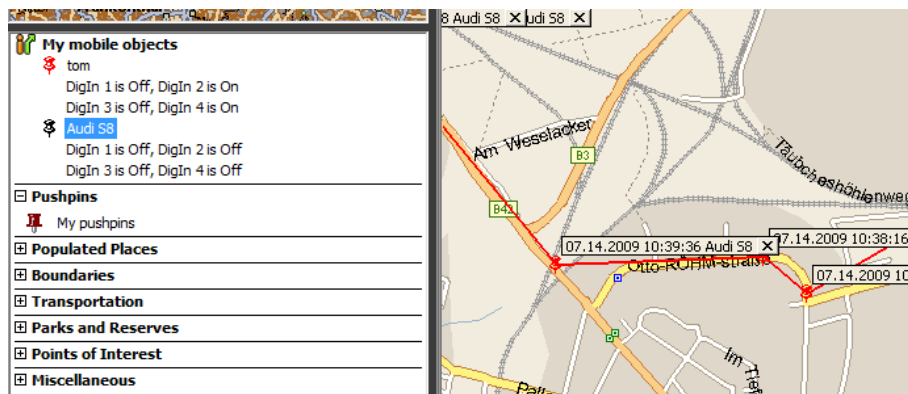
Please enter the path that is used for sending driving jobs and messages.

Default: /mm/display

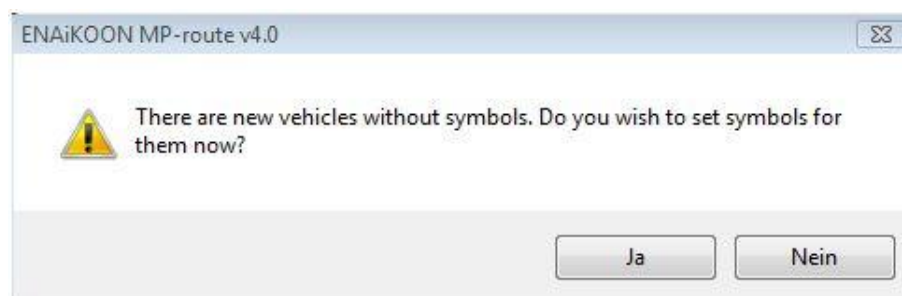
7.4 Vehicle symbols

Using ENAIKOON MP-route you can comfortably assign a symbol to every vehicle of your fleet, in order to identify your vehicles even more easily.

Your mobile objects are displayed in the MapPoint® map as well as in the agenda. By clicking a vehicle in the agenda it will be highlighted with blue colour. If you right-click the vehicle the dialogue box “Zoom to Selection” will open. After clicking it, ENAIKOON MP-route will zoom into the section the vehicle is located in and automatically scale up.



After logging on the ENAIKOON M2M-commserver the following message may eventually pop up when launching ENAIKOON MP-route for the first time:



The program alerts that not every vehicle has an assigned symbol that differs from the default settings.

If you are not planning to assign new symbols to the vehicles please click the „No” button.

In order to not have the message appear when you log on next time you can deactivate the function „Prompt if new vehicles without symbols exist” which you will find in the „Options” tab of the „Main” menu.

You can change the symbol assigned to a vehicle or the flashing of a pushpin at any time.

You additionally have the possibility to use so called direction pointers that can help you analyse the navigated routes.

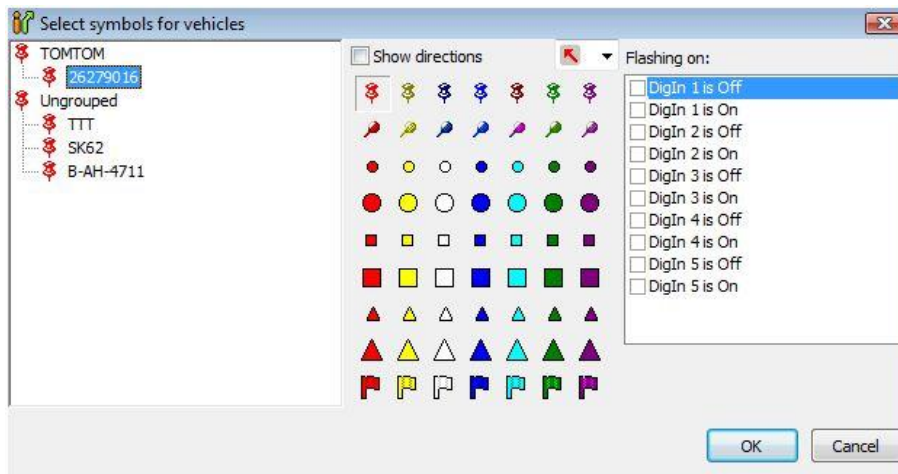
The assignation of vehicles and symbols is remembered beyond the end of a session.

7.4.1 Assigning symbols to single vehicles

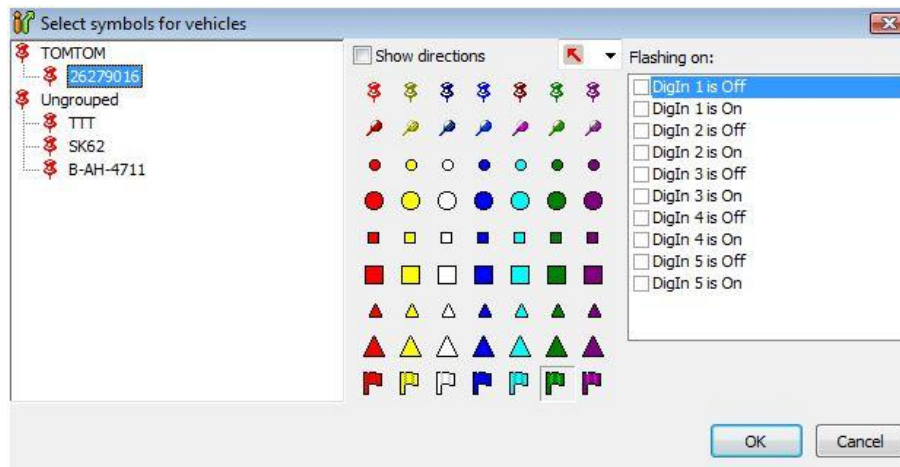
Please select the vehicle you want to change the symbol for.

In this example the green flag will be assigned to the vehicle with the serial number 26279016.

If you select the vehicle with the left mouse button it will be highlighted with blue colour.

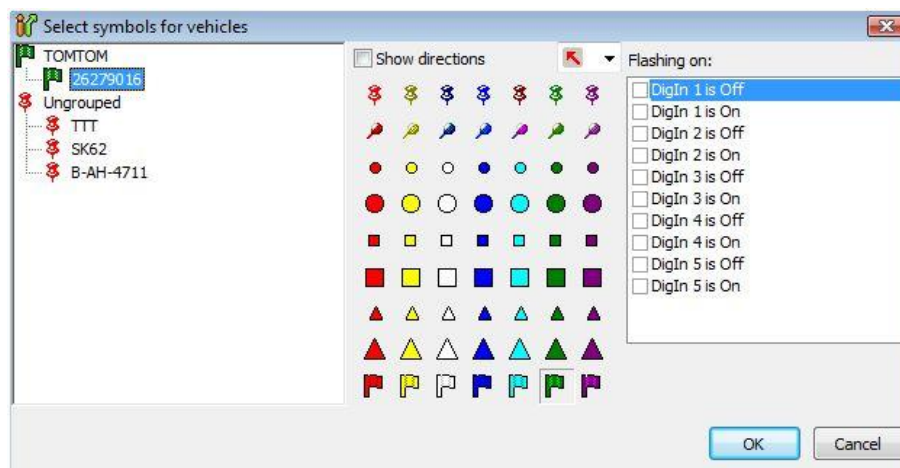


Please select the symbol you want to assign to the vehicle now. In this example we chose the green flag. The flag is highlighted if you click it with the left mouse button.



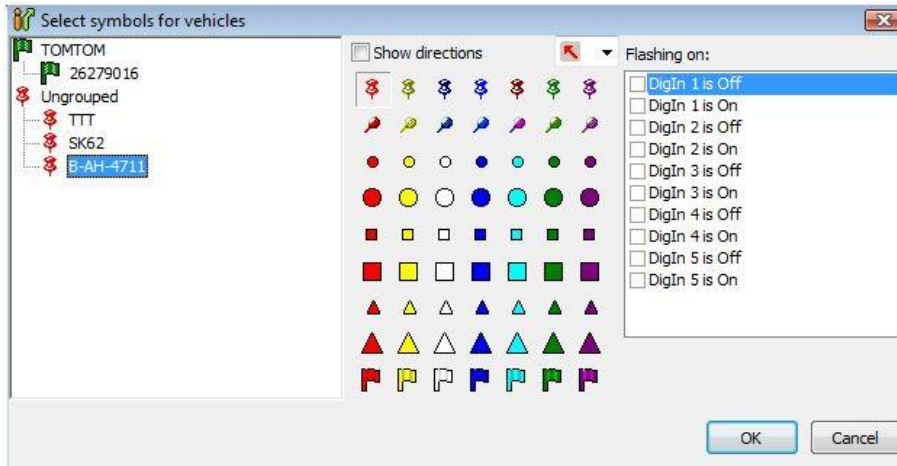
Please confirm the selection by clicking the „OK” button. The dialogue box will be closed. In order to see the changes open the dialogue window „Vehicle symbols”.

We now assigned the green flag to vehicle 26279016.



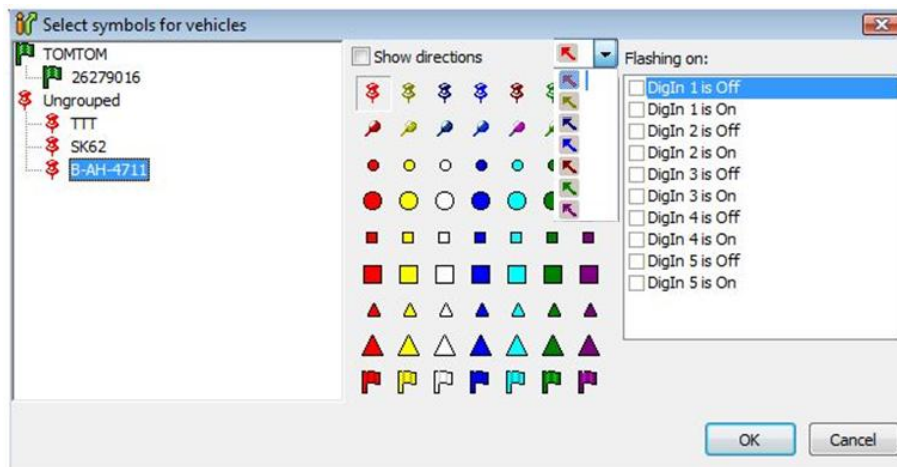
In order to assign a symbol to another vehicle, select the next vehicle and repeat the symbol selection. Repeat this step until you assigned a suitable symbol to every vehicle and confirm by clicking the „OK” button.

In our example a direction pointer is additionally added to a second vehicle with the serial number B-AH-4711. The direction pointer shows the navigated direction with every way point.

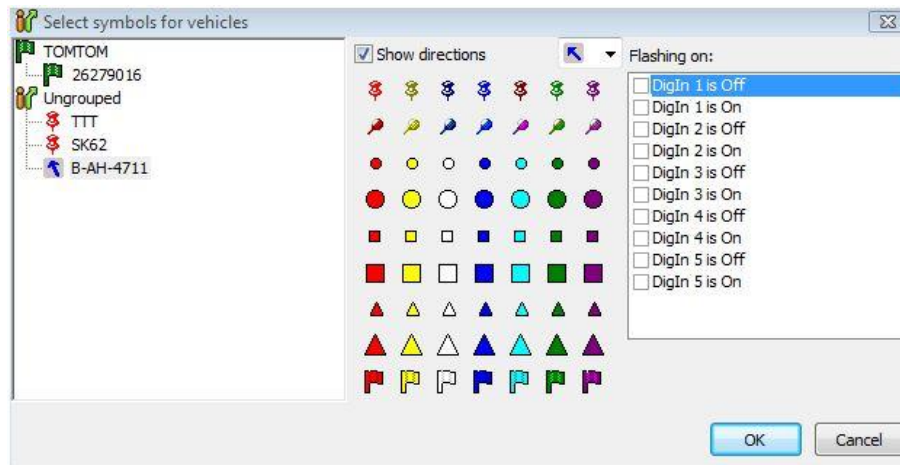


To do so you have to mark the vehicle with the serial number B-AH-4711 and select a direction arrow.

You can assign a direction arrow by clicking the little black triangle. Afterwards a list will open and you can choose the colour for the direction arrow.



The blue direction arrow was assigned for the example with serial number B-AH-4711.



If you activate the checkbox „Show directions”, the direction arrow will be shown when displaying the route or position the next time.

The colour of the symbol changes according to the selection of the display format as follows: the navigated route will be displayed using the coloured symbol you selected. All points where the ignition is off will also be displayed with your chosen symbol, however in black.

7.4.2 Status of the digital input

ENAIKOON MP-route offers the possibility to have the status of a single or a combination of several digital inputs displayed with flashing pushpins and direction arrows.

To do so you have to activate the checkbox of the relevant digital inputs.

The settings you can see in the image shows the default settings without any activated checkbox, i.e. no flashing symbols are displayed.



Sample Use:

The tracking device ENAIKOON locate-11 is available as a version with an emergency button. This emergency button is assigned to the digital input 1.

If you want to see immediately on the map if the emergency button of an ENAIKOON locate-11 tracking device was pressed you have to activate the checkbox for „DigIn 1 is On”.

The pushpin that is assigned to the respective device begins to flash as soon as

- a) the signal „DigIn 1 is On” is sent to the ENAiKOON M2M-commserver which is caused by a press on the emergency button of the device
- b) ENAiKOON MP-route read the respective information that was sent by the ENAiKOON tracking device to the ENAiKOON M2M-commserver.



Please note that this function is ideally used in combination with the option „Allow autorefresh of the positions”, because otherwise the emergency will not be registered automatically.

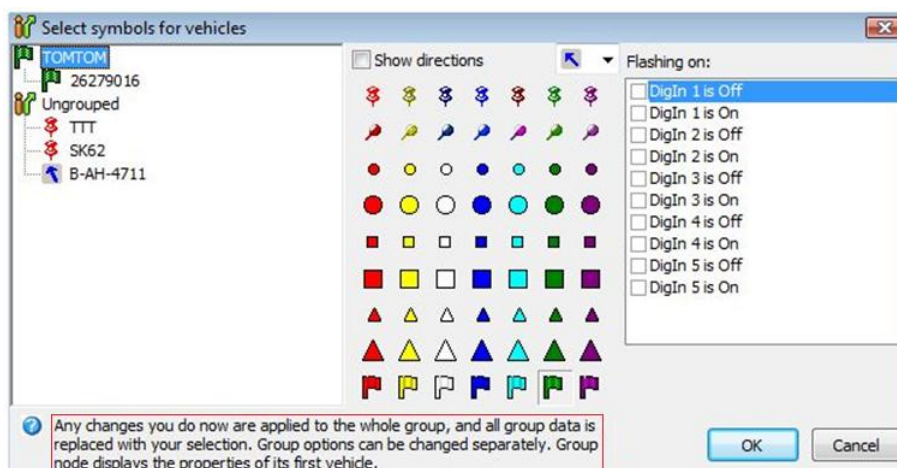
If the minimum interval of three minutes between two data requests is too long, please contact the ENAiKOON Support. The shortening of this interval is possible against an extra charge.

7.4.3 Assign a symbol to grouped mobile objects

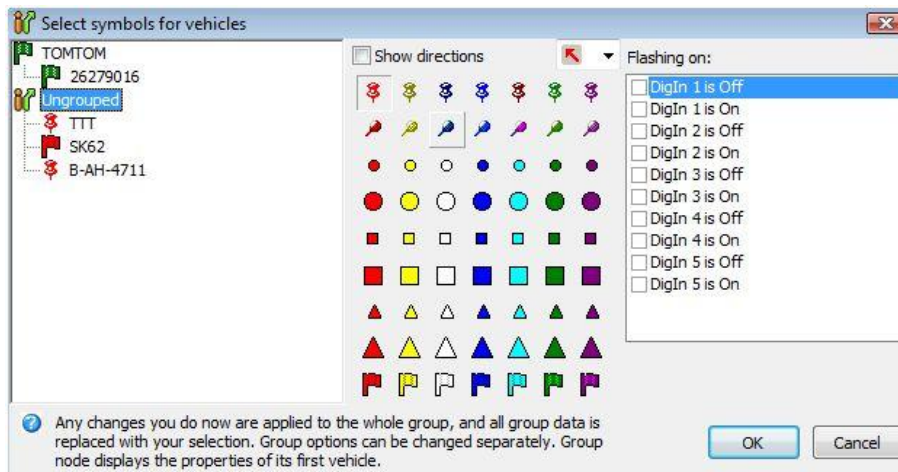
In order to assign a new symbol to a group of mobile objects, please carry out the steps described in chapter 7.4.1. Only the selection of the group name instead of a single mobile object is to be distinguished.

You can assign identical symbols to a group of vehicles.

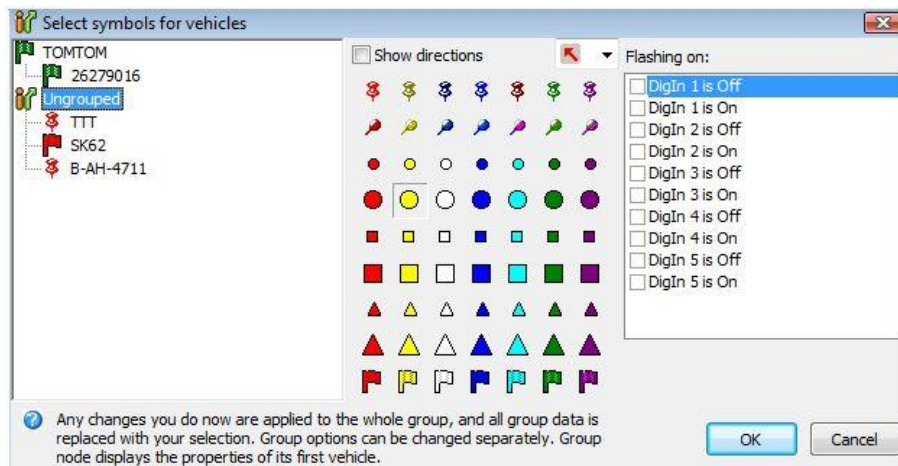
Please notice that all symbols you assigned to single vehicles within a group before will be replaced by the group symbol.



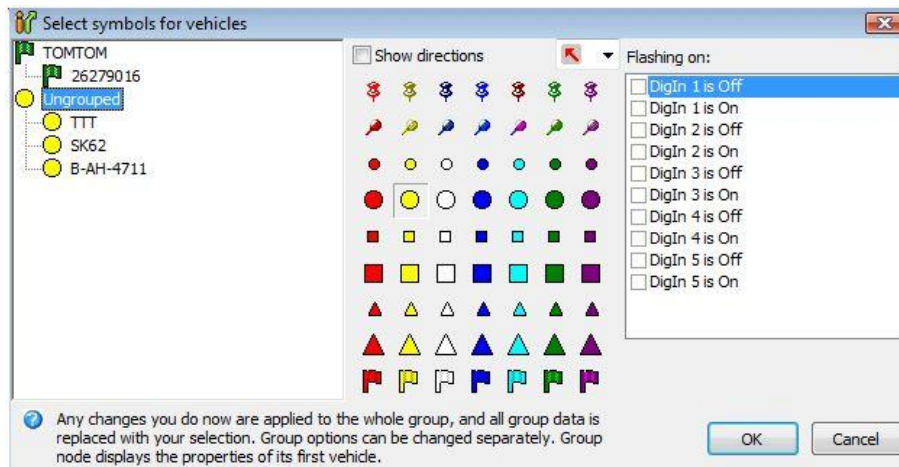
In example „Ungrouped” you can see that a group was selected, as an according notification is display „ Ungrouped”. A red flag was assigned to the single mobile object „SK62”.



In order to assign a new symbol to the vehicle group „Ungrouped“, select the group name, which will be highlighted with blue colour, and choose a new symbol. The yellow circle is used in this example.

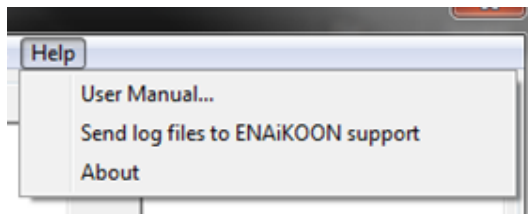


You will be informed that, after confirming your selection with the „OK“ button, the symbol will be assigned to all mobile objects within the chosen group.



7.5 Help

Here you will find additional information concerning ENAIKOON MP-route.



7.5.1 User Manual

If you select the option „User Manual...“, Adobe Acrobat Reader or another program that is able to display pdf files, will be launched and this manual will be opened.

In case you do not have any program for the display of pdf files installed on your computer, you have to install an appropriate program.

We recommend Adobe Acrobat Reader that can be downloaded from the following link free of charge: <http://get.adobe.com/de/reader/>

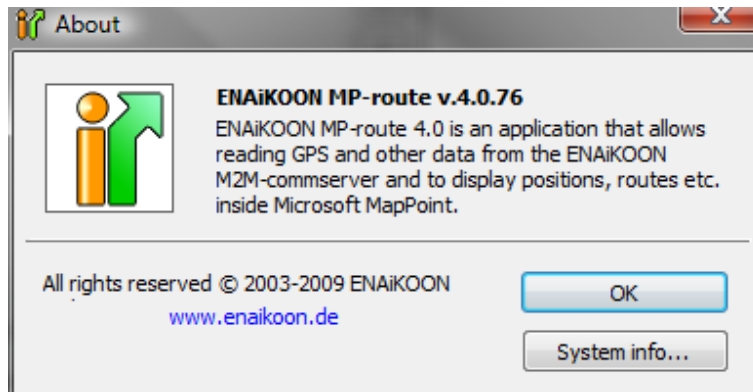
7.5.2 Send log files to ENAIKOON support

If ENAIKOON MP-route launches but the display options do not work properly, you can send the log file using the function „Send log files to ENAIKOON support“ to ENAIKOON via e-mail. The ENAIKOON support has the possibility to analyse the submitted file in order to find the error.

No confidential data will be sent to ENAIKOON.

7.5.3 About

A click on the „About“ menu item opens up an information window.

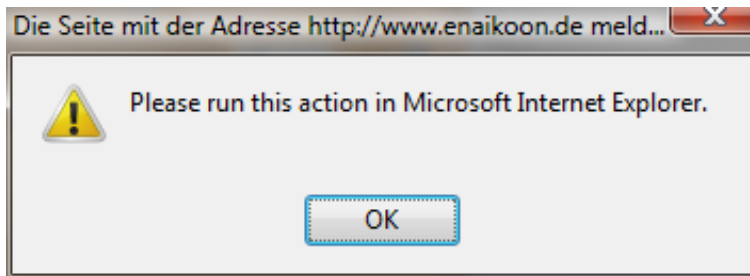


With a click on „System info“ you will be forwarded to the system overview of your operating system.

8 Launching ENAIKOON MP-route via ENAIKOON fleet-control-web

You can view a route in MapPoint® directly with ENAIKOON fleet-control-web.

For the present this functions is only available for Microsoft® Internet Explorer, otherwise the following error message will pop up:



Open Microsoft® Internet Explorer if you wish to use this function and log on with your access data at www.enaikoon.com/fleetControl.

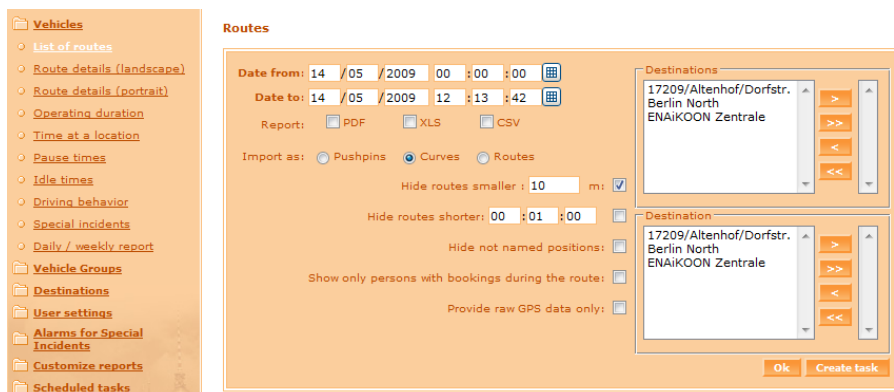
You can view a report for a vehicle and for example change over to the display format „Route details (Landscape)“.

You will get a detailed view of the selected time period in ENAIKOON fleet-control-web.

The time period fields are automatically filled out in the selection screen. The current date and the time period from 00:00 o'clock to the time you logged in to ENAIKOON fleet-control-web are used as default. If you want to view another time period you have to change the date and time entries accordingly.

The selection „Import as Curves“ is automatically executed if you activate the „View ENAIKOON MP-route“ button.

To show the route as „Pushpins“ or „Routes“, one of these options has to be selected and confirmed with the „OK“ button.



Click the „View ENAiKOON MP-route“ button now.

The screenshot shows the ENAiKOON web interface. On the left is a navigation menu with categories like Vehicles, Destinations, and User settings. The main area displays the 'Route details (landscape)' window, which includes date and time selection, report format options (PDF, XLS, CSV), and a list of destinations. Below this window, a table titled 'Route details (landscape) for vehicle: 26383057 (Audi S8) (360)' is visible. A red circle highlights a button in the table header.

I	Date / Time A	Location	Direction	Altitude	Duration	Dist
	15/06/2009 14:10:10	ENAIKOON Zentrale		92 m		
	15/06/2009 14:12:05	10587/Berlin/Salzufer 22		62 m	00:01:55	0.3

This launches Microsoft® MapPoint® if not opened yet and ENAiKOON MP-route will start automatically with your access data.

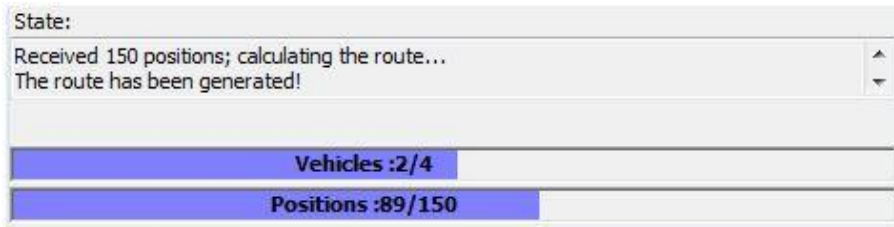
Afterwards the selected data will be loaded from the ENAiKOON M2M-commserver and will be displayed.

Please notice that the function „View ENAiKOON MP-route“ only works if Active-X elements are enabled in your web browser. You can enable Active-X elements under „Extras“ → „Options“ in your Internet Explorer. You can find further information on the settings in the online help of the Internet Explorer.

You can find further information on ENAiKOON fleet-control-web in the ENAiKOON fleet-control-web user manual.

9 Status messages and progress bar

In the status bar of ENAiKOOON MP-route all messages of ENAiKOOON MP-route, which are sent out during a command are shown.



In the status display shown above you can see that 89 positions out of 150 positions were received from the server and that the router of the mobile object was calculated last. Additionally the progress that is displayed by a blue bar shows how many vehicles are imported, as well as the current progress of the position calculation.

Using the arrows on the right to the status line, you can have all status messages of a session displayed. With this you are able to look through all executed commands from ENAiKOOON MP-route as well as the error messages since your last login.

10 Commando line execution of ENAIKOON MP-route

A software module is delivered with ENAIKOON MP-route that allows you to launch Microsoft® MapPoint® and ENAIKOON MP-route from inside other applications.

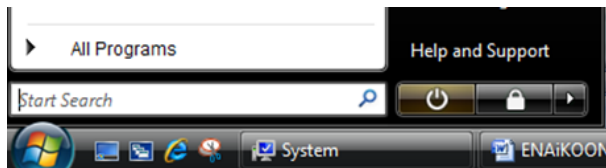
10.1 DOS Box

The DOS box is a Windows application. It is found as follows:

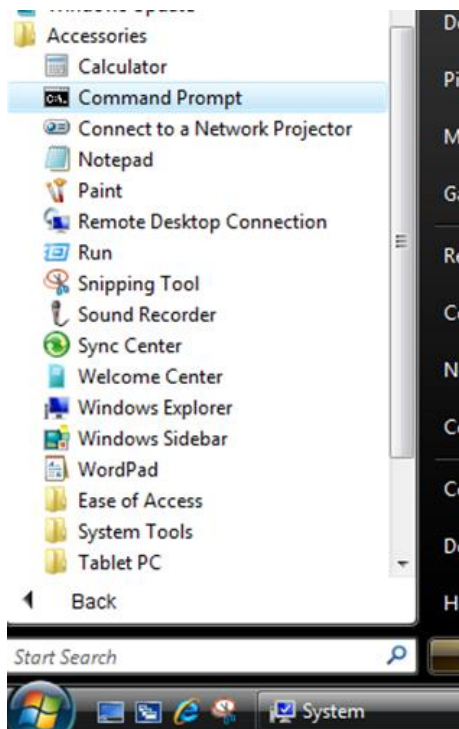
Click the Windows Start button.



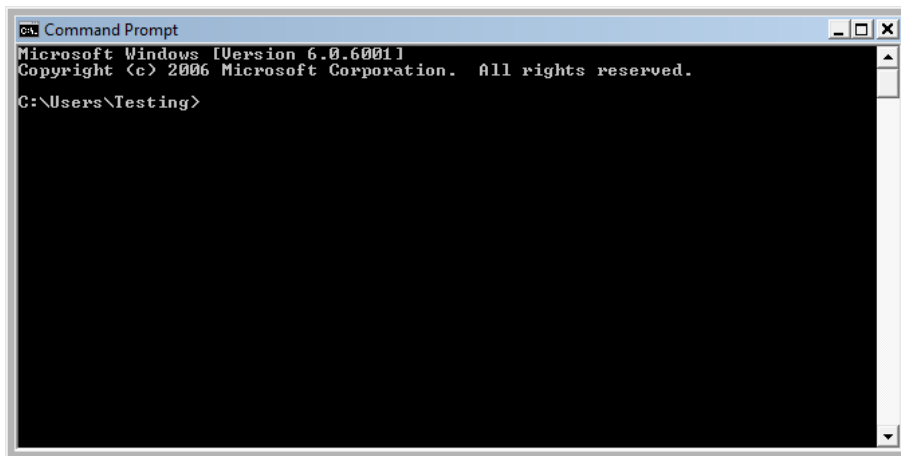
Select „All Programs“.



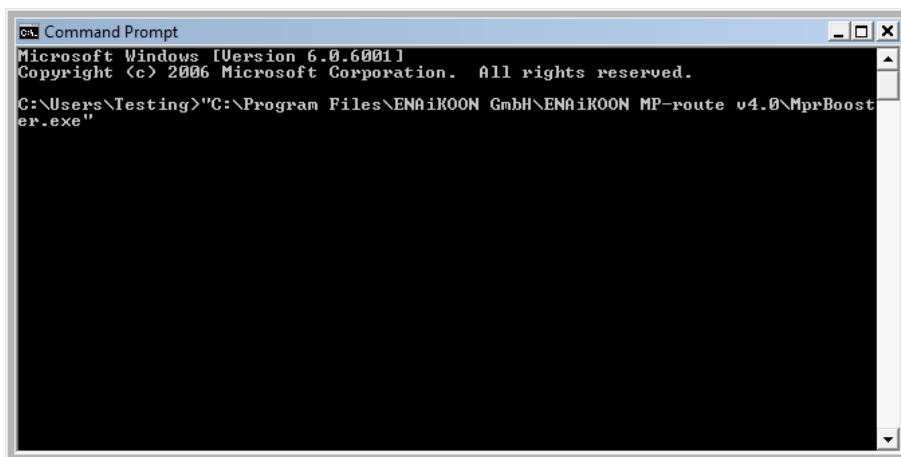
Go to „Accessories“ and choose „Command Prompt“:



The following window will open after clicking „Command Prompt“:



MprBooster.exe is a command line tool for the execution of MS® MapPoint® 2009 with defined parameters for the ENAIKOON MP-route access.



10.2 Command line parameters

The command line call of ENAIKOON MP-route uses the following format:

```
"C:\Program Files\ENAIKOON GmbH\ENAIKOON MP-route v4.0\MprBooster.exe" -  
login="user name" -password="password" -vehicles="valueX1,valueX2" -  
start="MM.DD.YYYY HH:MM" -end="MM.DD.YYYY HH:MM" -  
refresh="valueX1,valueX" -importas="pushpins" -positions=
```

-login="user name"

With this parameter the user name is sent to ENAIKOON MP-route. This parameter has to be entered in every case.

-password="password"

With this parameter the password is sent to ENAIKOON MP-route. This parameter has to be entered in every case.

-vehicles="value1,value2,value3"

With this parameter the serial numbers of the vehicles that are to be analysed are sent. If two or more serial numbers of vehicles are to be entered, you have to separate the values of the vehicle list, using a comma.

This parameter has to be entered in every case.

-start="01.26.2009 08:00"

Format: "MM.DD.YYYY HH:MM"

Use a blank to separate date and time.

Date and time, at which the analysing period should start. This parameter has to be entered in every case and will be used to import the route data.

-end="01.26.2009 09:30"

Format: "MM.DD.YYYY HH:MM"

Use a blank to separate date and time.

Date and time, at which the analysing period should end. This parameter has to be entered in every case and will be used to import the route data.

-refresh="value1,value2,value3"

This set of parameters can be defined, if the display of the vehicles' positions should be updated.

The parameter values are:

- value1:
Time value in minutes, for the automatic loading of the position data, for example 10
- value2:
1 to activate an automatic adjustment of the zoom to the newly loaded vehicle position, otherwise 0
- value3:
1 to update the routes, otherwise 0

-importas="value"

This parameter defines if a navigated route is displayed by a "pushpin", a "curve" or a "route".

The parameter value has to be one of the following:

= "pushpins"

= "curves"

= "route"

-positions=

This parameter has to be entered without a value. With this parameter you can exclusively load the positions of the vehicles.

In order to open ENAiKOON MP-route with the according parameters, please use the command line execution as shown below:

```
"C:\Program Files\ENAIKOON GmbH\ENAIKOON MP-route v4.0\ MprBooster.exe"
```

Examples for the import of routes:

```
-login="test" -password="test" -vehicles="tom,E320" -start="01.25.2009  
12:00" -end="01.25.2009 15:00" -importas="pushpins"
```

```
-login="test" -password="test" -vehicles="tom,E320" -start="01.25.2009  
12:00" -end="01.25.2009 15:00" -importas="Curves"
```

Examples for the import of positions:

```
-login="test" -password="test" -positions=" " -vehicles="tom,E320" -refresh="10,1,1"
```

```
-login="test" -password="test" -positions=" " -vehicles="tom,E320"
```

11 Tips for use

11.1 Tips for the use of MapPoint®

In the following you will find tips for an efficient use of Microsoft® MapPoint®. You can find detailed instructions in the online help of Microsoft® MapPoint®.

Keep the right mouse button pressed as you drag the mouse pointer in any direction. If you reached your favoured selection frame, release the right mouse button and click inside the frame and the map section will be displayed larger.

The map section can be moved by clicking the left mouse button inside the map and simultaneously moving the mouse in any direction.

The map section can be moved by bringing the mouse near a map border. As soon as a bold arrow appears, that displays the navigation direction, the map section will move into the desired direction after you press the left mouse button.

The map section can also be moved in a fast mode. Move the mouse pointer to a map border until a bold, white arrow appears. While pressing the left mouse button the map moves into the chosen direction until you release the mouse button.

The selected map section will be highlighted in a little map in the top left corner.

If you move the highlighted part in the mini map, the chosen map section will be displayed in the large map window.

By clicking any point in the mini map, the highlighted part will move to the selected area and be displayed in the large map window.

11.2 Tips for advanced users

11.2.1 Log files

All requests to the server as well as various messages are saved in the log file. You can find the log file in the following directory:

For Windows XP: C:\Documents and Settings**username**\Local Settings\Application Data\ENAIKOON MP-route v4.0 → Text-File

For Windows Vista: C:\Users**username**\AppData\Local\ENAIKOON MP-route v4.0\Text-File

Username is the login name you use for Windows.

11.2.2 Display of system information

In rare cases the menu item „system info“ that can be found in the „Help“ menu in „About“ may not work.

This is caused by the missing Microsoft® Office component „System Info...” that is not installed on your computer in this case.

Please install this component and try again.

11.2.3 Address path for log files

You can change the address, where log files are stored in the configuration file "C:\Documents and Settings\username\Local Settings\AppData".

For Windows XP:

C:\Users\username\Local Settings\Application Data\ENAIKOON MP-route v4.0→CONFIG-File

For Windows Vista:

C:\Users\username\AppData\Local\ENAIKOON MP-route v4.0→ENAIKOON MP-route→CONFIG-File

Username is the login name you use for windows.

Typical content of the configuration file:

<Application>

<Options>

<Login>Semm</Login>

<Password>xxxx</Password>

<RememberMe>-1</RememberMe>

<RouteURL>http://www.enaikoon.de////gps-xml/gps.jsp</RouteURL>

<VehiclesURL>http://www.enaikoon.de////mm/query-vehicle-list</VehiclesURL>

<PositionsURL>http://www.enaikoon.de////mm/query-last-positions</PositionsURL>

<GeoFencing>http://www.enaikoon.de////mm/query-circle</GeoFencing>

<MessagesURL>http://www.enaikoon.de////mm/display</MessagesURL>

<UIFile>Deutsch.xml</UIFile>

<LogFile>ENAIKOON MP-route.log</LogFile>

<ErrSave2Log>1</ErrSave2Log>

<ErrShow>1</ErrShow>

<DeleteUnselectedVehicles>1</DeleteUnselectedVehicles>

<PromptForSymbols>1</PromptForSymbols>

<AllowImportAsRoute>1</AllowImportAsRoute>

<ShowNameOfPushpin>1</ShowNameOfPushpin>

<UseTimeStamp timeOnly="-1">1</UseTimeStamp>

```
<UserName/>
<UseAddress zip="0" city="0" street="0" streetNo="0">0</UseAddress>
<ShowEvery>0</ShowEvery>
<ShowDirectionsForAllVehicles>0</ShowDirectionsForAllVehicles>
<RootUrlHistory/>
>http://81.20.88.20;http://www.enaikoon.de;http://81.20.88.20/</RootUrlHistory>
<ShowDigingStatus>1</ShowDigingStatus>
<ShowDiginsOnMouseOver>1</ShowDiginsOnMouseOver>
<ShowDiginsPermanently>0</ShowDiginsPermanently>
<ShowDiginsStatusOnAgenda>0</ShowDiginsStatusOnAgenda>
<ShowLabelsOnAgenda>0</ShowLabelsOnAgenda>
<ShowAddressesOnAgenda>0</ShowAddressesOnAgenda>
<PositionsRootUrl/>
<Autorefresh>0</Autorefresh>
<EvolvingRoutes>0</EvolvingRoutes>
<Show>1</Show>
<Email_smtpServer>smtp.enaikoon.de</Email_smtpServer>
<Email_smtpUsername>mp-route-logs</Email_smtpUsername>
<Email_smtpPassword>xxx</Email_smtpPassword>
<Email_senderName>ENAIKOON</Email_senderName>
<Email_senderEmail>mp-route-logs@enaikoon.de</Email_senderEmail>
<Email_receipientEmail>mp-route-logs@enaikoon.de</Email_receipientEmail>
<Email_smtpPort>25</Email_smtpPort>
<Email_cc>astoletniy@eclipse-sp.com</Email_cc>
</Options>
</Application>
```

ENAIKOON GmbH
Helmholtzstr. 2 - 9
D - 10587 Berlin
Germany
www.enaikoon.com